

FADHILI ZINA WAMCHAO

Elia Temihanga V.A. Makendi

St. Kizito Choir-Ismani Parish

Juni 2006

(Moyo Mt. wa Yesu A)

♩ = 76

S
A

Fa dhi li zaBwa na fa dhi li zaBwa na fa dhi li zaBwa na zi na wa m cha o

T
B

Musical notation for Soprano and Alto parts, measures 1-4. The Soprano part is in treble clef with a key signature of two sharps (F# and C#) and a 2/4 time signature. The Alto part is in bass clef with the same key signature and time signature. The lyrics are: Fa dhi li zaBwa na fa dhi li zaBwa na fa dhi li zaBwa na zi na wa m cha o.

5

zi na wa m cha o zi na wa m cha o zi na wa m cha o ta ngu mi le le ha - ta mi -

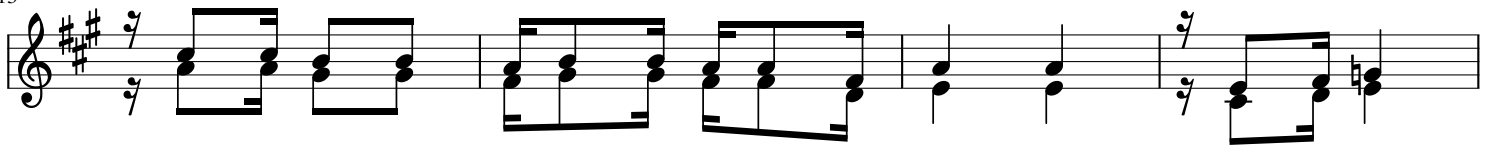
Musical notation for Soprano and Alto parts, measures 5-8. The Soprano part is in treble clef with a key signature of two sharps (F# and C#) and a 2/4 time signature. The Alto part is in bass clef with the same key signature and time signature. The lyrics are: zi na wa m cha o zi na wa m cha o zi na wa m cha o ta ngu mi le le ha - ta mi -.

11

le le.

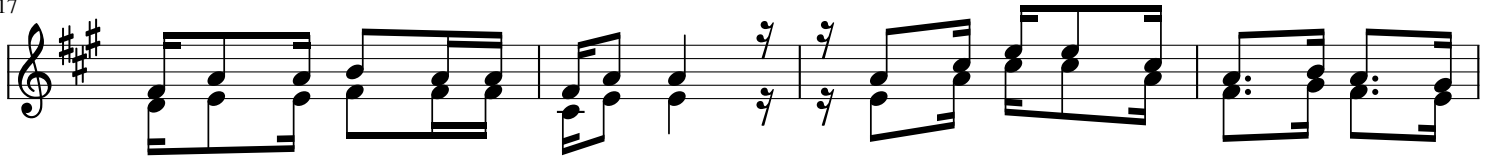
Musical notation for Soprano and Alto parts, measures 11-12. The Soprano part is in treble clef with a key signature of two sharps (F# and C#) and a 2/4 time signature. The Alto part is in bass clef with the same key signature and time signature. The lyrics are: le le.

13



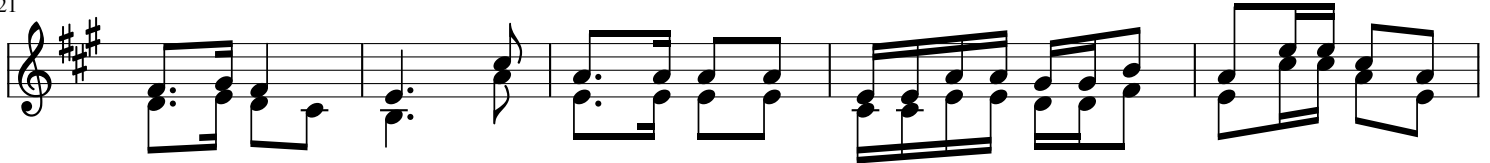
1.Ee na fsi ya ngu u m hi mi di Bwa na naa m vyo
 2.A ku sa me he ma o vu ya ko yo te a ku po
 3.Ndi ye a na ye fa nya ma mbo ya ha ki na hu ku
 4.Bwa a me ja a hu ru ma na na nee ma ha - o

17



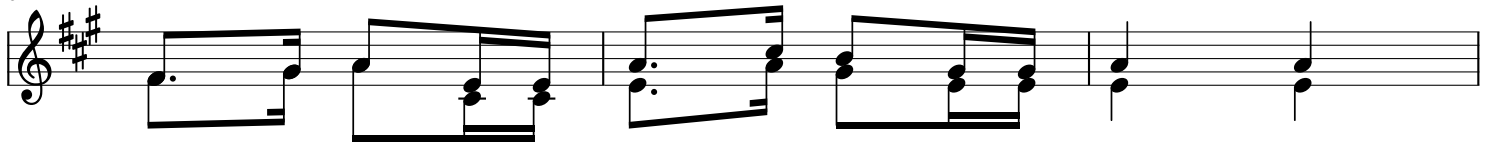
1.te vi li vyo mo nda ni ya ngu vi li hi mi di ji na la ke
 2.nya ma - go njwa ya ko yo te a ko mbo a u ha i wa ko
 3.mu kwa wa li o - o ne wa a li m ju li sha - Mu sa
 4.ni ha - si ra - u pe si Bwa na ni mwi ngi wa fa dhi li

21



1.ta ka ti fu Ee na fsi ya ngu u m hi mi di - Bwa na wa la u si
 2.na ka bu ri a u kombo a u ha i na ka - bu ri a ku ti a
 3.nji a za ke a li m ju li sha Mu sa nji a - za ke na o wa na
 4.wa fa dhi li ha ku tu te nda sa wa na ha ti a ze tu wa la ha ku

26



1.zi sa ha u fa dhi li za ke - zo te.
 2.ta ji ya fa - dhi li na re - he ma.
 3.wa I sra e li ma - te ndo - ya ke.
 4.tu li pa ka ri di ri ya ma vu ye tu.