

EE BWANA MUNGU WETU

ZAB 106:47

Sindani P T K

Ee Bwa na Mu ngu we tu Ee Bwa na Mu ngu we

The first system of the hymn is written in 3/8 time. It consists of two staves: a treble clef staff for the melody and a bass clef staff for the accompaniment. The melody begins with a quarter rest, followed by a quarter note 'Ee', an eighth note 'Bwa', and a quarter note 'na'. This is followed by a quarter rest, a quarter note 'Mu', an eighth note 'ngu', and a quarter note 'we'. The word 'tu' is written under a half note. The second measure of the system repeats the first measure: 'Ee Bwa na Mu ngu we'.

tu u tu o ko e u tu ku sa nyekwa ku tu to a ka ti ka Ma ta i fa

The second system of the hymn continues the melody. It starts with a quarter note 'tu', followed by a quarter note 'u', an eighth note 'tu', a quarter note 'o', an eighth note 'ko', and a quarter note 'e'. This is followed by a quarter note 'u', an eighth note 'tu', a quarter note 'ku', an eighth note 'sa', a quarter note 'nyekwa', an eighth note 'ku', and a quarter note 'tu'. The word 'to' is written under a quarter note, 'a' under a quarter note, 'ka' under a quarter note, 'ti' under a quarter note, 'ka' under a quarter note, 'Ma' under a quarter note, 'ta' under a quarter note, 'i' under a quarter note, and 'fa' under a quarter note.

tu li shu ku ru ji na la ko ko ta ka ti fu tu zi fa nyi e shangwe

The third system of the hymn continues the melody. It starts with a quarter note 'tu', an eighth note 'li', a quarter note 'shu', an eighth note 'ku', a quarter note 'ru', an eighth note 'ji', and a quarter note 'na'. This is followed by a quarter note 'la', an eighth note 'ko', and a quarter note 'ko'. The word 'ta' is written under a quarter note, 'ka' under a quarter note, 'ti' under a quarter note, and 'fu' under a quarter note. The word 'tu' is written under a quarter note, 'zi' under a quarter note, 'fa' under a quarter note, 'nyi' under a quarter note, 'e' under a quarter note, and 'shangwe' under a quarter note.

si fa si fa za ko za - ko

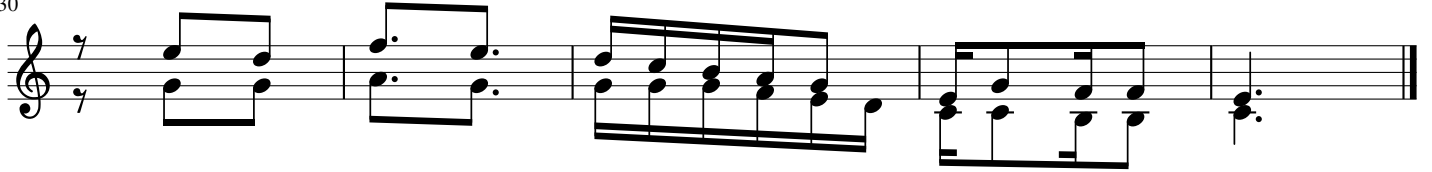
The fourth system of the hymn continues the melody. It starts with a quarter note 'si', an eighth note 'fa', a quarter note 'si', an eighth note 'fa', a quarter note 'za', a quarter note 'ko', an eighth note 'za', and a quarter note 'ko'. The system ends with a double bar line and repeat signs.

24



1. A le lu ya m shu ku ru ni Bwa na kwa ku wa ni mwe ma
 2. Na ni a we za ye ku ya ne na ma te ndo ma ku u ya - Mu ngu
 3. A hji mi di we Bwa na - Mu ngu ta ngu mi le le na mi - le le

30



1. kwa ma a na fa dhi li za ke - ni za mi le le
 2. kuzi hu bi ri si fa za ke si - fa - za - ke
 3. wa tu wo te na wa se me A le - lu - ya