

NAMPENDA BWANA

ZABURI 116;1-6-8-9 MWAKA B

By m.p.makingi
Parokia Kipalapala
30.08.2018
Tabora

Moderato

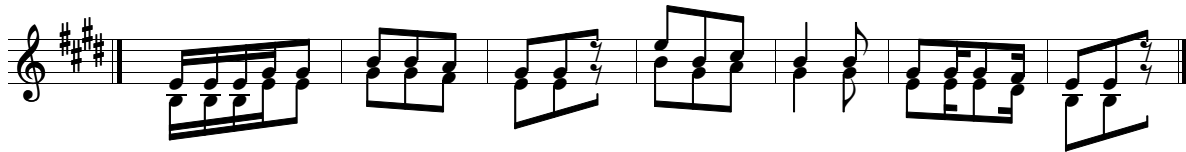
Na m pe nda Bwa na kwa ku wa a na ni si ki li za mi mi li za
kwe li

sa u ti ya ngu na du a ya ngu Bwa na a me po ke a
mi mi

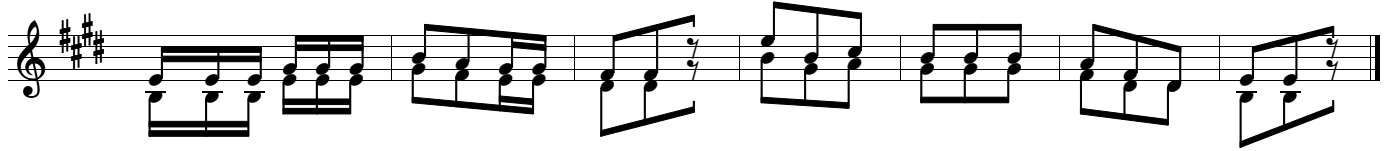
Na m pe nda Bwa na kwa ku wa a na ni si ki li za li - - za **FINE**

1.Kwa ma a na a me ni te ge a si ki o la ke kwa hi yo

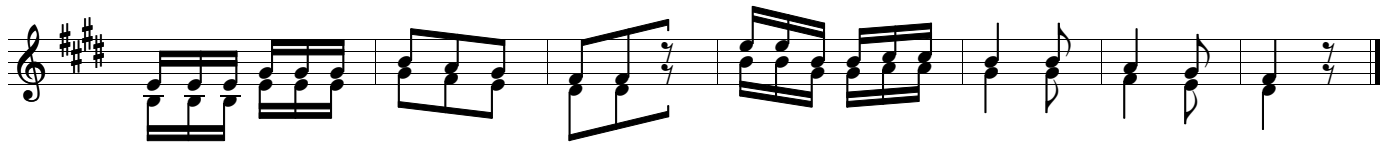
1.ni ta mwi ta si ku zo te



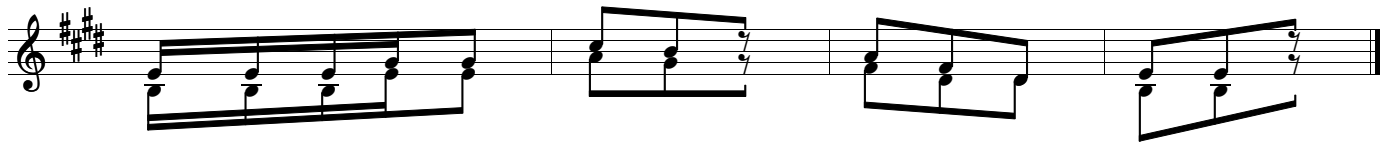
2.Nita e nenda mbe le za Bwana ka ti ka n chi za wa li o ha i.



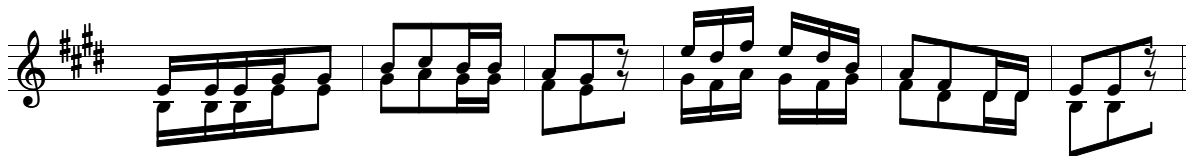
3.Ka mba za ma u ti zi li ni zu ngu ka shi da za ku zi mu zi li ni pa ta.



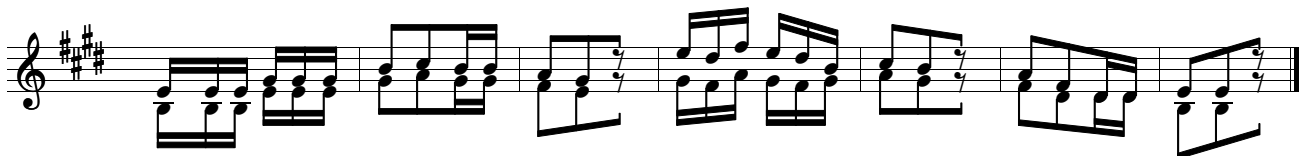
4.Ni li o na ta a Bu na hu zu ni ni ka li i ti a ji na la Bwa na



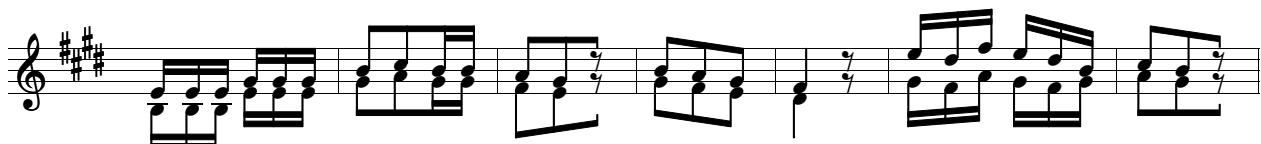
4.Ee Bwa na mu ngu wa ngu u ni o ko e



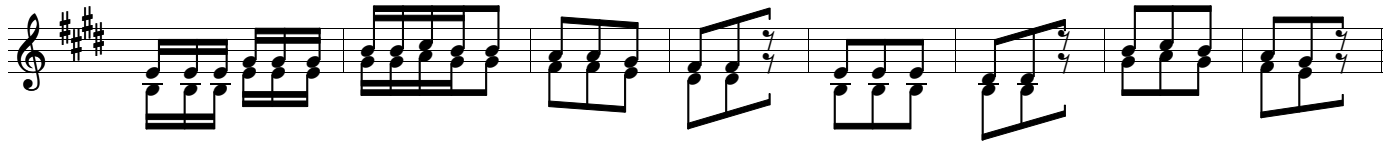
5.Bwana ni mwenye ne e ma na ha ki na m mu ngu we tu ni mwe nyere he ma.



6.Bwana u wa li nda wa si o na hi la ni li ku wa ta - - Bu ni a ka ni o ko a.



7.Ma a na a meni po nya na fsi ya ngu na ma u ti ma cho ya ngu na ma cho zi



7.nami gu u ya ngu na ku a ngu ka ni ta e ne nda mbe le za Bwa na ka ti ka n chi



7.za wa li o ha i.