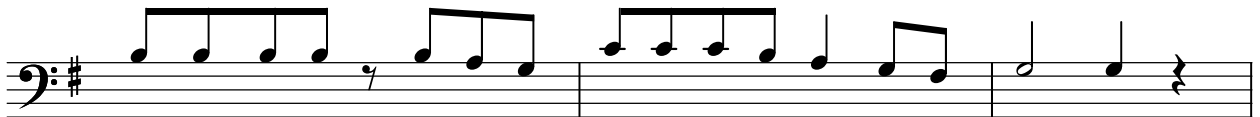


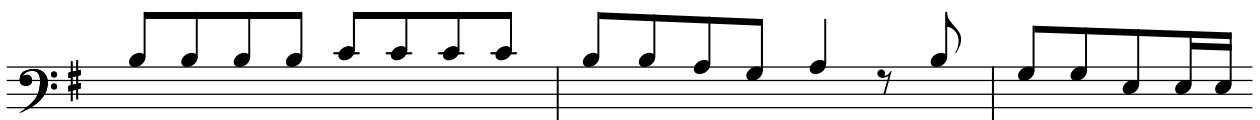
2.A ka ni pa ndi sha to ka shi mo la u ha ri bi fu to ka u do ngo wa



u te le zi a ka i si ma mi sha mi gu u ya



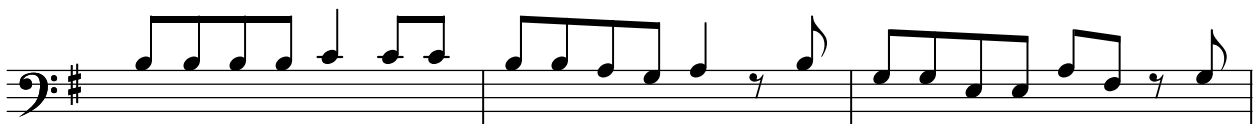
ngu mwa mba ni a ka zi i ma ri sha ha tu a za ngu



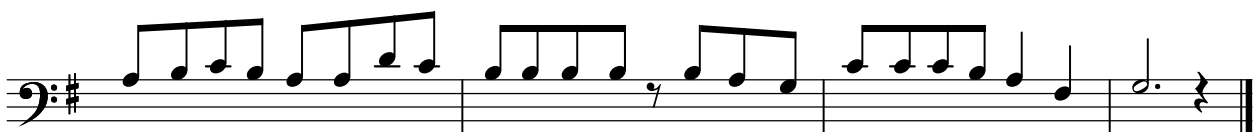
3.A ka ti a wi mbo m pya ki nywa ni mwa ngu ndi o si fa za ke



Mu ngu we tu we ngi wa ta o na na ku o go pa na o wa ta m tu ma i ni Bwa na



4.Na mi ni ma ski ni na m hi ta ji Bwa na a ta ni tu nza ndi



we msa a da wa ngu na wo ko vu wa ngu Ee Mu ngu wa ngu u si ka wi e