

Dom.18C

INGEKUWA HERI

By Germanus Hanga
Kibaoni parish 2007

I - nge - ku - wa he - ri le - o m - si - ki - e sa - u - ti ya - ke m - si - fa - nye mi

gu - mu mi - - o - yo ye - nu m - si - fa - nye mi - gu - mu mi - - o - - yo
ye - nu
m - si - fa - nye mi - gu - mu - mi - gu - mu mi - - o - - yo

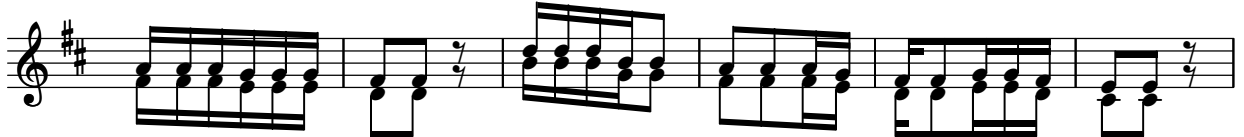
ye - nu.

1. Njoo-ni tu-mwi-mbi-e Bwa-na tu-m-fa-nyi-e sha-ngwe mwa-mba wa wo-ko - - vu we - tu

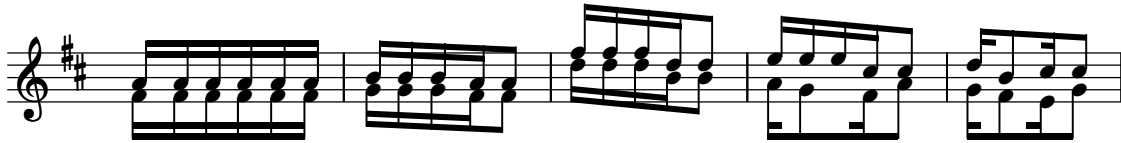
1. tu-je mbe-le za-ke kwa shu - -kra-ni tu-m-fa-nyi-e sha- - -ngwe- - kwa- - za - -



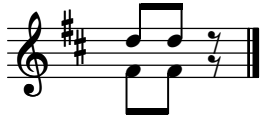
1. bu - ri.



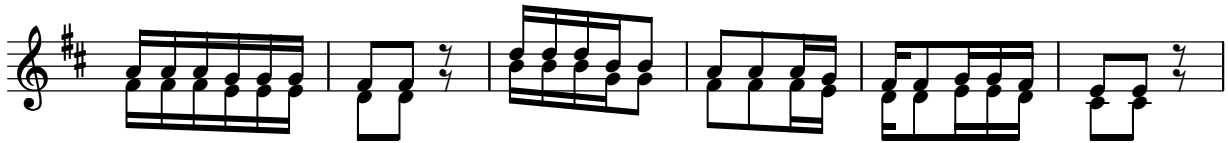
2. Njoo-ni tu - a - bu - du njoo-ni, tu - su - ju - du tu - pi - ge ma - go - ti mbe - le za - ke bwa - na



2. kwa ma - a - na ndi - ye Mu - ngu we - tu tu - wa - tu wa ma - li - sho - ye tu ko - ndo - o



2. wa - ke.



3. Ka - ma vi - le hu - ko Meri - ba ka - ma si - ku ka - ma si - ku ya - ma - sa - ja - ngwa - ni



3. wa - li - po - ni - ja - ri - bu ba - ba ze - nu wa - ka - ni - pi - ma wa - ka - ya - o - na ma - te - ndo



3. ya - ngu.