

YOTE ULİYOTUTENDEA

By G.Hanga 2010
Ifakara parish.

DOM.26 MWAKA A,B na C MWANZO

Ee Bwa-na yo - te u - li - yo - tu - te - nde - - a, yo-te u - me - ya - te - nda kwa

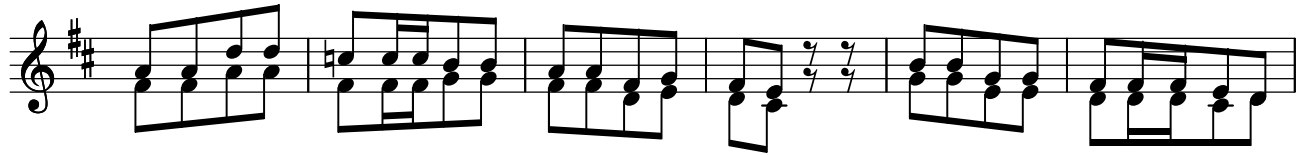
ha - - ki kwa ku-wa si - si tu-me - te - nda dha - -

mbi tu-me-te-nda wa - la ha - tu - ku - zi - ti - i a - mri - za - ko

1. u - li - tu - ku - ze ji - na - la - ko na ku - tu - te - nde - a sa - wa - sa - wa na wi - ngi wa fa



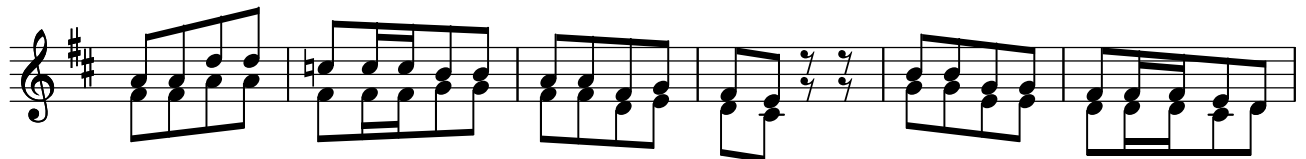
dhi - li za - ko



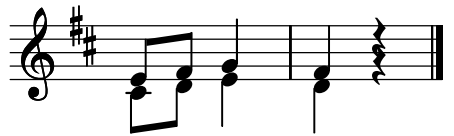
2. Ee Bwa-na ku - mbu-ka re-he-ma za-ko na fa - dhi-li ma - a - na zi - me-ku-ewe-ko to



ka za - ma - ni



3. U - si - ya - ku - mbu-ke ma-ko-sa ya u - ja - na wa-ngu wa - la u - si - ya - ku - mbu - ke ma



u - si ya - ngu