

Hofu Imetanda

Rukeha.pb@Mbagalakuu.Dsm
+255 754 567120

moderato

Ho fu i me ta nda du ni a_ i me ti ki si ka na ku te te me ka

i me ti ki si ka

This system contains the first two staves of music. The top staff is the vocal line, and the bottom staff is the piano accompaniment. The key signature has three sharps (F#, C#, G#) and the time signature is 3/4. The lyrics are: 'Ho fu i me ta nda du ni a_ i me ti ki si ka na ku te te me ka' on the top staff, and 'i me ti ki si ka' on the bottom staff.

na ku te te me ka oo!_

oo! i me ti ki si ka oo!_ ho fu i me ta nda, Bwana Ye su

oo!

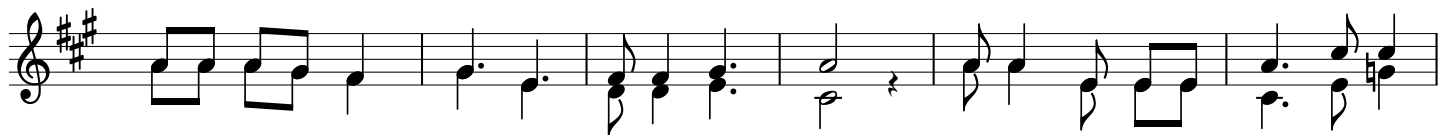
This system contains the next two staves of music. The lyrics continue: 'na ku te te me ka oo!_' on the top staff, and 'oo! i me ti ki si ka oo!_ ho fu i me ta nda, Bwana Ye su' on the bottom staff. There is an additional 'oo!' written below the bottom staff.

nyo sha m ko no wa ko tu li za hi i dho ru ba i li ho fu i to we ke ko te

This system contains the third and fourth staves of music. The lyrics are: 'nyo sha m ko no wa ko tu li za hi i dho ru ba i li ho fu i to we ke ko te'.

du ni a ni.

This system contains the final two staves of music. The lyrics are: 'du ni a ni.'



1. Ni pi go ku bwa sa na du ni a ni, wa ku bwakwawa do go wa
2. Bi la ya we we Bwa na tu ta shi ndwa, wa ku bwakwawa do go twa
3. We - we Bwa na ndi we ki nga ye tu, twa ju wa we we Bwa na hu



1. ha nga i ka, wa tu wa na a nga mi a kwa u gonjwawa co ro na.
2. e le me wa, wa tu wa na a nga mi a kwa u gonjwawa co ro na.
3. ta tu a cha, Bwa na twa ku o mba fa nya ha ra ka tu sa i di e.