

KWA KUWA MKATE NI MMOJA

Rogers K.J

14.05.2012

Dodoma

Moderato

1Kor 10 : 17

Kwa ku-wa m-ka-te ni m - mo - ja si - si tu - li - o we -

The first system of the hymn features a piano accompaniment in 2/4 time with a key signature of three sharps (F#, C#, G#). The melody is written in the treble clef, and the piano accompaniment is in the bass clef. The lyrics are: "Kwa ku-wa m-ka-te ni m - mo - ja si - si tu - li - o we -".

ngi tu mwi-li m - mo - ja Kwa ja kwa ma

The second system continues the melody and piano accompaniment. It includes a first ending (1.) and a second ending (2.). The lyrics are: "ngi tu mwi-li m - mo - ja Kwa ja kwa ma".

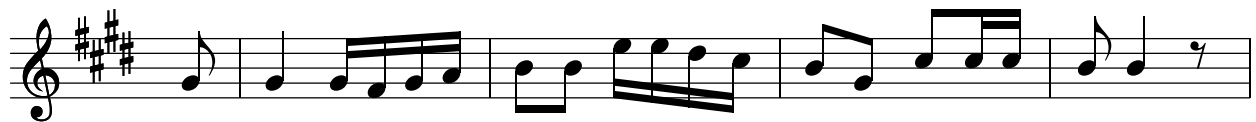
a - na si - si so - te twa-shi ri - ki m-ka - te m - mo - ja na ki -

The third system continues the melody and piano accompaniment. The lyrics are: "a - na si - si so - te twa-shi ri - ki m-ka - te m - mo - ja na ki -".

ko - mbe ki - mo - ja kwa ma ja.

The fourth system concludes the hymn with a first ending (1.) and a second ending (2.). The lyrics are: "ko - mbe ki - mo - ja kwa ma ja.".

1Kor 12 : 27



1. Ba - si si - si so - te so-te tu-me - ku-wa mwi-li m - mo-ja,



1. ki - la m-mo - ja ni ki - u - ngo cha mwi-li wa Kri - stu.

Rum. 12 : 1



2. Ba - si i - to - e - ni mi - i - li ye-nu i - we dha - bi - hu i - li - yo



2. ha - i, ha - i na ta-ka-ti - fu ye-nye ku-m - pe-nde-za Mu - ngu.

Rum. 12 : 6



3. Na - si tu-ki-wa ni vi - u - ngo vya mwi-li wa Kri-stu, tu - tu-mi-e



3. ve-ma ka ra-ma tu-li-zo-pe - wa kwa ka-di - ri ya ne - e-ma za - ke.