

BWANA ATAKUFUNIKA

Augustine Rutta

22/2/2017

Dar es salaam

chi ni ya m ba wa

Bwa na a ta ku fu ni ka kwa ma nyo ya ya kechi ni ya m ba wa za ke chi ni

This system contains the first six measures of the piece. It features a piano accompaniment with a treble and bass clef, and a vocal line with lyrics. The key signature has four sharps (F#, C#, G#, D#) and the time signature is 3/4. The lyrics are: 'chi ni ya m ba wa', 'Bwa na a ta ku fu ni ka kwa ma nyo ya ya kechi ni', and 'ya m ba wa za ke chi ni'.

ya m ba wa

ya m ba wa za ke ,chi ni ya m ba wa za ke,chi ni chi ni ya m ba wa za ke u ta

chi ni ya m ba wa za ke, chi ni ya m ba wa

This system contains measures 7 through 12. The piano accompaniment continues with the same key signature and time signature. The lyrics are: 'ya m ba wa', 'ya m ba wa za ke ,chi ni ya m ba wa za ke,chi ni chi ni ya m ba wa za ke u ta', and 'chi ni ya m ba wa za ke, chi ni ya m ba wa'.

13

1. 2.

pa ta ki mbi li o. li o

This system contains measures 13 and 14. It features a first ending (1.) and a second ending (2.). The piano accompaniment continues. The lyrics are: 'pa ta ki mbi li o. li o'.

16

1.Hu na ha ja ya ku o go pa vi ti sho vya u si ku, wa la sha mbu li o la gha fla, gha fla m cha na,

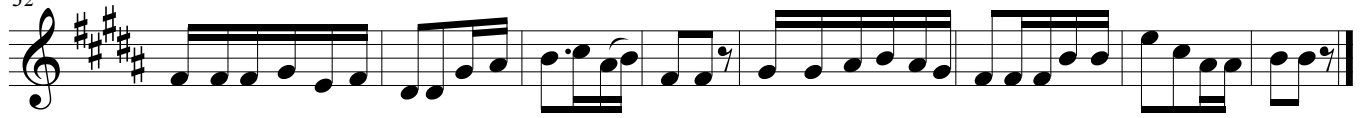
This system contains measures 16 through 23. The piano accompaniment continues. The lyrics are: '1.Hu na ha ja ya ku o go pa vi ti sho vya u si ku, wa la sha mbu li o la gha fla, gha fla m cha na,'.

24

2.Hu na ha ja ya ku o gp pa ba a li zu ka lo u si ku, wa la ma a fa ya na yo to ke a m cha na.

This system contains measures 24 through 31. The piano accompaniment continues. The lyrics are: '2.Hu na ha ja ya ku o gp pa ba a li zu ka lo u si ku, wa la ma a fa ya na yo to ke a m cha na.'

32



3.Hu ta pa twa na ma a fa na ma a fa yo yo te, nyu mba ya ko ha i ta ka ri bi wa ba ba a lo lo te.