

KWA NINI NISIKUSIFU!

Na Adolf Shundu
Parokia ya Kilosa
June 2017

Twist style

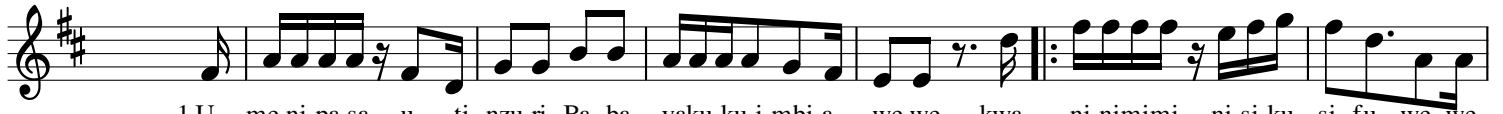
Musical notation for the first system, measures 1-5. The key signature is one sharp (F#) and the time signature is 2/4. The melody is written in the treble clef and the bass line in the bass clef. The lyrics are: Ni ta ku si fu Mu ngu wa ngu e he! Ni ta ku si fu Mu u mba wa ngu wo ho! kwa

Musical notation for the second system, measures 6-11. The key signature is one sharp (F#) and the time signature is 2/4. The melody is written in the treble clef and the bass line in the bass clef. The lyrics are: ni ni mi mi ni si ku si fu we we mi - le - le Ni le wa ni ja li a a fya. There are first and second endings indicated by '1.' and '2.' above the staff.

Musical notation for the third system, measures 12-17. The key signature is one sharp (F#) and the time signature is 2/4. The melody is written in the treble clef and the bass line in the bass clef. The lyrics are: nje - ma na nguvuza ku fa nya ka zi wo ho!kwa ni ni mi mi ni si ku si fu we we mi - le -

Musical notation for the fourth system, measures 18-19. The key signature is one sharp (F#) and the time signature is 2/4. The melody is written in the treble clef and the bass line in the bass clef. The lyrics are: le kwa le. There are first and second endings indicated by '1.' and '2.' above the staff.

20



1. U me ni pa sa u ti nzu ri Ba ba yaku ku i mbi a we we kwa ni nimimi ni si ku si fu we we
 2. Wa te nda mambo ma ku u Bwa na - ya si yo he sa - bi ka kwa ni nimimi ni si ku si fu we we
 3. Ha ki ka wewe ni ki o ngo zi - wa ma i sha yangu yo te kwa ni nimimi ni si ku si fu we we
 4. She ta ni a ki li si ki a ji na la ko hu a nguka chi ni kwa ni nimimi ni si ku si fu we we

27



1. mi	-	le	le	kwa	le
2. mi	-	le	le	kwa	le
3. mi	-	le	le	kwa	le
4. mi	-	le	le	kwa	le