

Aliyekufa Msalabani Amefufuka

K.F.Manyenye

20-02-2005

Mwabagole Kwimba

♩ = 70

Ye su Kri stu a li ye ku fa m sa la ba ni a me fu fu ka, a -

me fu fu ka mwi li na ro - ho a - me fu fu ka mwi - li na ro ho A me re

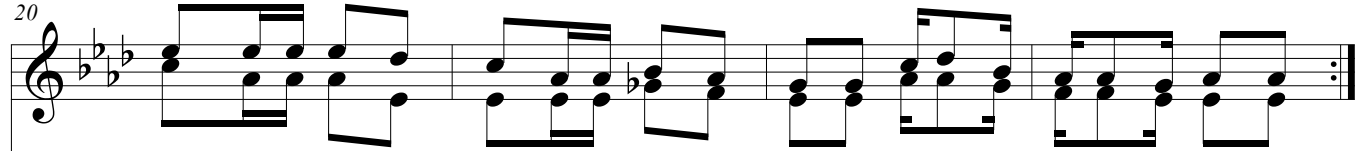
a me re je a u zi ma,
je a ka ti ka ha li ya ke, ya u zi ma a me re je a u zi - ma a

je a ka ti ka ha li ya ke ya - u zi ma, a me re je a u zi - ma a
li o ku wa na o a, li o ku wa na - o a - li o ku wa na o
li o ku wa na o a
li o ku wa na o na o a - li o ku wa na o,

2

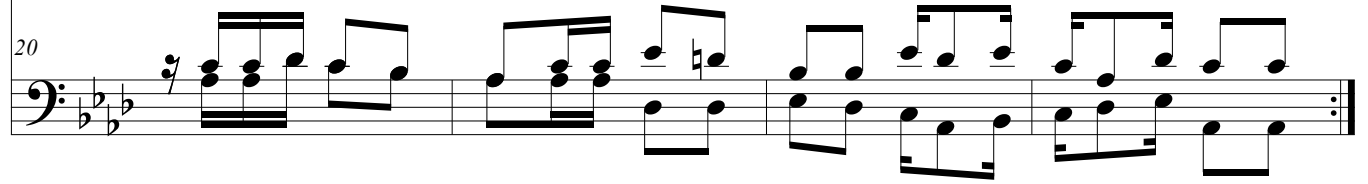
Aliyekufa Msalabani Amefufuka

20



a me fu fu ka mwi li na ro ho ya ke a ki wa na a fya nje ma.
a me fu fu ka

20

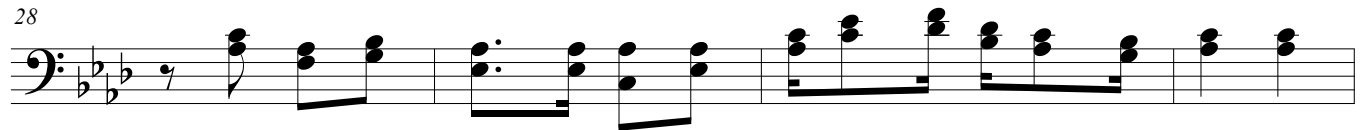


24



1. Ee Ye su mwe ma u li ye fu fu ka ku to ka wa - fu,
2. A me fu fu ka m zi ma ka ma a li vyo se ma mwa nzo,
3. Ma u ti na u zi ma vi me shi nda na ni a ja - bu,
4. M ta po ke a u zi ma u li o tu nzwa mbi ngu - ni,

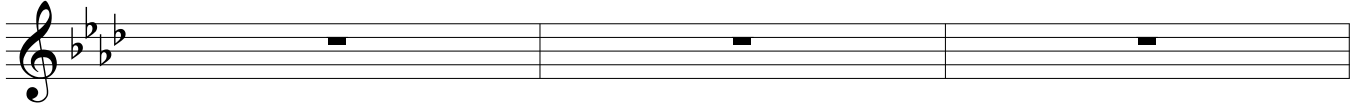
28



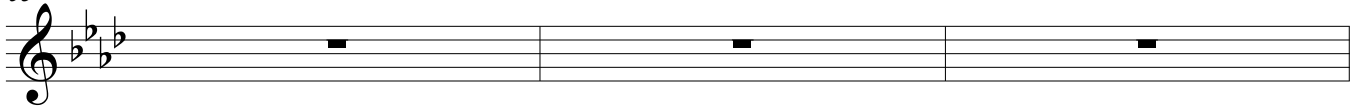
u ni ku mbu ke na mi ka ti ka u fa lme wa ko.
Mwa na wa Mu ngu a ta fu fu ka si ku ya ta tu.
Kri stu a li ye ku fa a ta wa la ni m zi ma
m ki ya i shi ya le ma pe nzi ya Ba ba ya ngu.

Typed by the composer

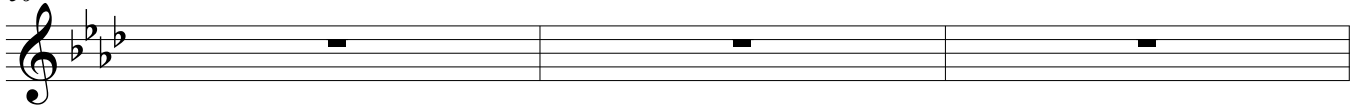
50



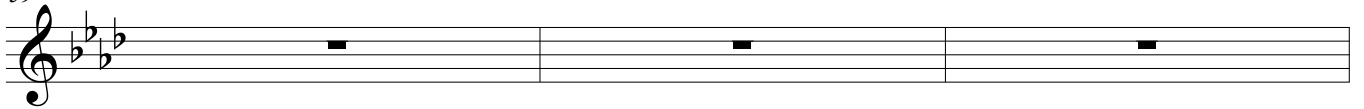
53



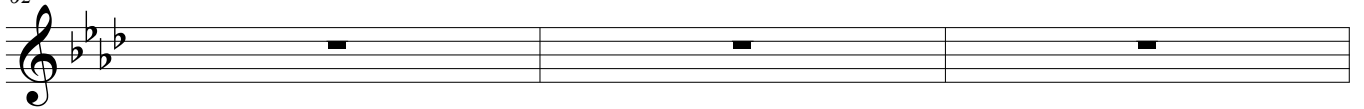
56



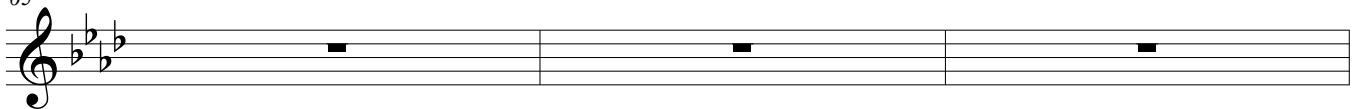
59



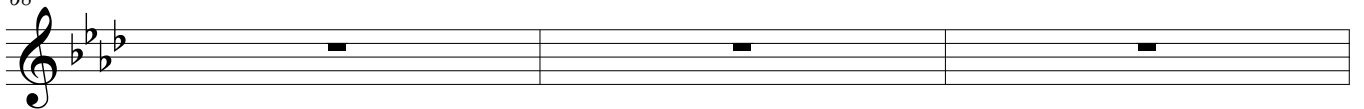
62



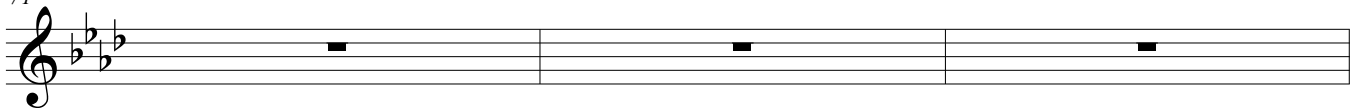
65



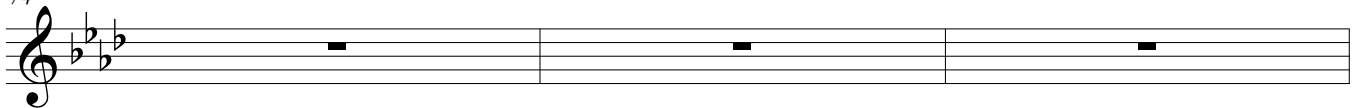
68



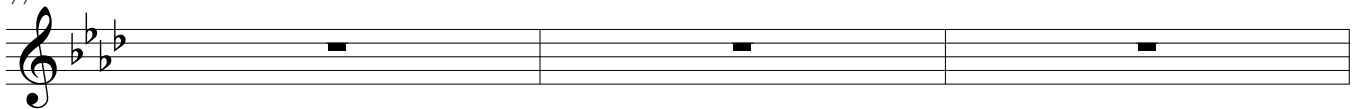
71



74



77



80

