

NJIA ZOTE ZA BWANA NI FADHILI NA KWELI.

Zaburi 25:4-10

Na; Anophrine D. Shirima,
February 12 2018,
St. Thomas Moore Choir,
Mzumbe University.

Musical score for the first system of the hymn. It consists of two staves: a treble clef staff and a bass clef staff. The time signature is 2/4. The key signature has one flat (B-flat). The lyrics are: "nji a za Nji a zo te za Bwa - na ni fa dhi li na ha - fa dhi li na ha".

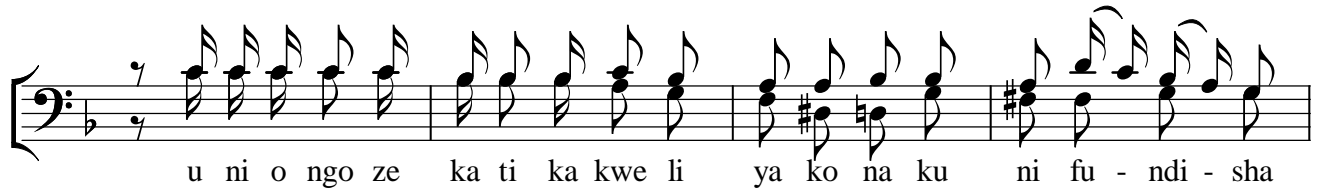
Musical score for the second system of the hymn. It consists of two staves: a treble clef staff and a bass clef staff. The time signature is 2/4. The key signature has one flat (B-flat). The lyrics are: "ki kwa o wa li shi ka o a ga no la ke na shu kwa o".

Musical score for the third system of the hymn. It consists of two staves: a treble clef staff and a bass clef staff. The time signature is 2/4. The key signature has one flat (B-flat). The lyrics are: "hu da za ke hu da za - ke." The system includes a first ending (1.) and a second ending (2.).

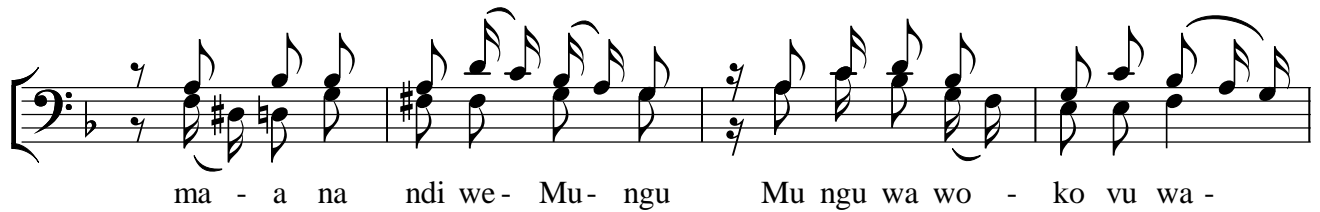
SHAIRI 01.



E Bwa na u ni ju li she nji a za - ko u ni fu ndi she ma pi to ya ko



u ni o ngo ze ka ti ka kwe li ya ko na ku ni fu - ndi - sha

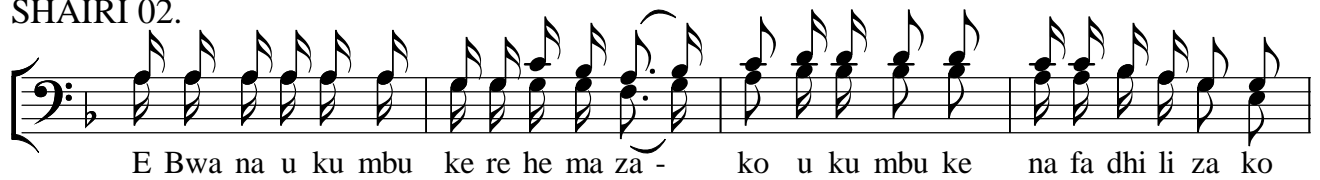


ma - a na ndi we- Mu- ngu Mu ngu wa wo - ko vu wa -

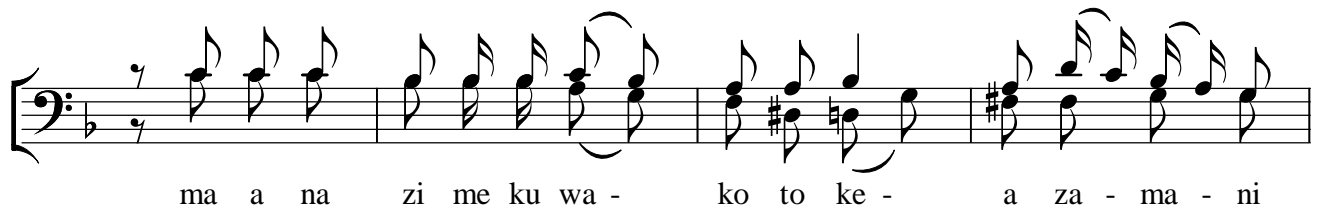


ngu ma a na ndi we- Mu- ngu Mu ngu wa wo - ko vu wa ngu.

SHAIRI 02.



E Bwa na u ku mbu ke re he ma za - ko u ku mbu ke na fa dhi li za ko



ma a na zi me ku wa - ko to ke - a za - ma - ni

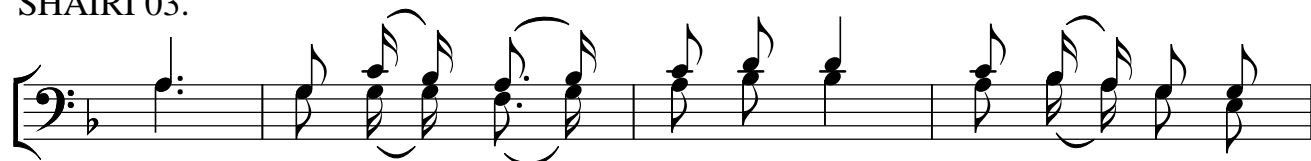


ni ku mbu ke kwa ka- di- ri kwa ka di ri - ya fa dhi li za -

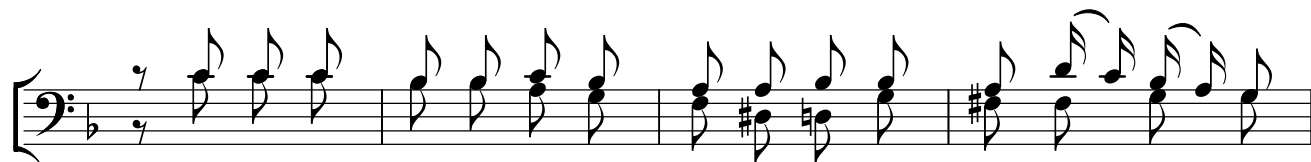


ko Ee Bwa na Bwa na- Mu- ngu kwa a ji li - ya we ma wa ko

SHAIRI 03.



Bwa na yu - mwe - ma na mwe nye a - di li



kwa hi yo a ta wa fu ndi sha we nye dha mbi- nji - a



wa - po le wa ta o ngo- zwa wa ta o ngo zwa ka ti ka hu ku



mu na wa ta fu - ndi- shwa wa ta fu ndi shwa - nji a za ke.

"Wala pasipo wewe, mimi siwezi neno lolote" (Yoh 15:5c).