

HII NDIYO SIKU

(Pasaka)

Furaha Mbughi
Igogwe Parish - Mbeya

17-03-2018

$\text{♩} = 80$

Hi i ndiyo si ku, a li yo a li yo i fa nya Bwa na; na. Tu ta

1. Tu ta
2. Tu ta

Detailed description: This system contains the first five measures of the piece. It features a treble and bass staff in 2/4 time with a key signature of one sharp (F#). The melody is primarily in the treble clef, with accompaniment in the bass clef. The lyrics are 'Hi i ndiyo si ku, a li yo a li yo i fa nya Bwa na; na.' The system concludes with two first endings, both leading to the lyrics 'Tu ta'.

6 sha ngi li a, na ku i fu ra hi a, Tu ta

sha Tu ta sha ngi li a, na na ku i fu ra hi a, Tu ta

Tu ta sha ngi li a, na ku i fu ra hi a,

Detailed description: This system contains measures 6 through 9. The melody continues with the lyrics 'sha ngi li a, na ku i fu ra hi a, Tu ta'. The accompaniment provides a steady harmonic support. The system ends with the lyrics 'Tu ta sha ngi li a, na ku i fu ra hi a,'.

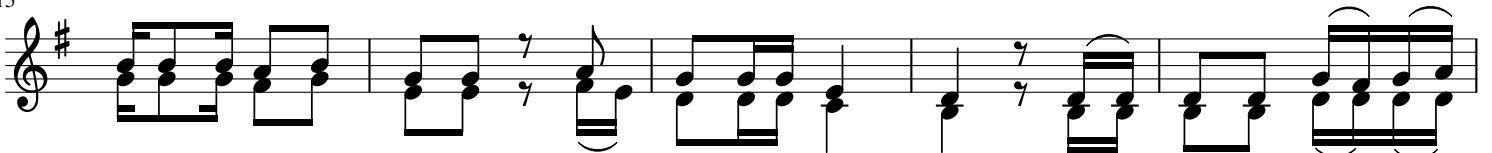
10 sha ngi li a, na Tu ta

sha tu ta sha ngi li a a na ku i fu ra hi a; Tu ta a.

tu ta sha ngi li a, na

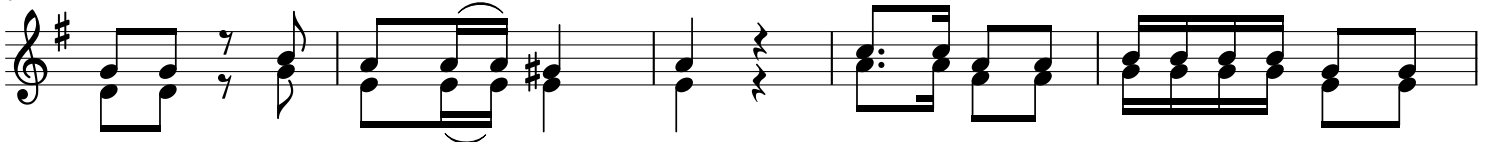
Detailed description: This system contains measures 10 through 13. It begins with the lyrics 'sha ngi li a, na Tu ta'. The melody and accompaniment continue. The system concludes with two first endings, both leading to the lyrics 'Tu ta a.'.

15



1.Mshu ku ru ni Bwa na, kwa ku wa ni mwe ma, kwa ma a na fa__ dhi li
 2.M ko no wa ku u me, m ko no wa Bwa na, m__ ko no wa ke wa ku
 3.Ji we wa lo ka ta a, ka ta a wa a shi, li me ku wa ji__ we__

20



za ke, ni za mi__ le le, I sra e li na a se me sa sa,
 u me, hu te nda ma ku u, si ta ku fa ba li ni ta i shi,
 ku u, la pe____ mbe ni, ne no hi li ku to ka kwa Bwa na,

25



ya kwa mba fa dhi li za ke, ni za mi__ le le.
 na mi ni ta si mu li a, ma te ndo ya Bwa na.
 na lo a ja bu__ sa na, ma cho ni__ pe tu.