

MBINGU ZIFURAHU

Zab. 96 : 1-3, 5-6 (K) 11

Shanel Komba
27.12.2012
Kisasa, Dodoma

Wimbo wa katikati
Octava ya Noel (29.12)

mf

Mbingu zi - fu - ra - hi na - yo n - chi na - yo n - chi i - fa - nye shangwe

mf

Detailed description: This system shows the first six measures of the piano accompaniment. The music is in 3/8 time with a key signature of three sharps (F#, C#, G#). The melody is primarily in the right hand, with a supporting bass line in the left hand. Dynamics are marked as mezzo-forte (mf).

mp *mf*

mbe-le za Bwa-na, mbe-le za Bwa-na mbe-le za Bwa-na kwa sa

mp *mf*

Detailed description: This system covers the next six measures. It includes a repeat sign at the beginning. Dynamics are marked as mezzo-piano (mp) and mezzo-forte (mf). The piano part continues with a steady accompaniment.

ba-bu a - me - ku - ja

Detailed description: This system contains the final two measures of the piano accompaniment for this section. It concludes with a repeat sign.

Soprano/Alto

1. Mwimbie-ni Bwana Mwimbi-e-ni wimbo mpya, Mwimbie-ni Bwa - na n-chi yo - te.

Detailed description: This block shows the vocal line for the Soprano/Alto voice part. The melody is written on a single staff in the same key and time signature as the piano accompaniment.

Tenor/Bass

1. Mwimbi-e-ni Bwa-na Mwimbi - e - ni wimbo m-pya, Mwimbi-e - ni Bwa na li - ba - ri

Detailed description: This block shows the vocal line for the Tenor/Bass voice part. The melody is written on a single staff in the same key and time signature as the piano accompaniment.



1. ki - ni ji - na la-ke.

Soprano/Alto



2. Tanga-ze-ni wo - ko-vu wa-ke si - ku kwa si-ku, wa-hu-bi - ri - ni ma-ta - i - fa ha



2. ba-ri za u - tu - ku-fu.

Tenor/Bass

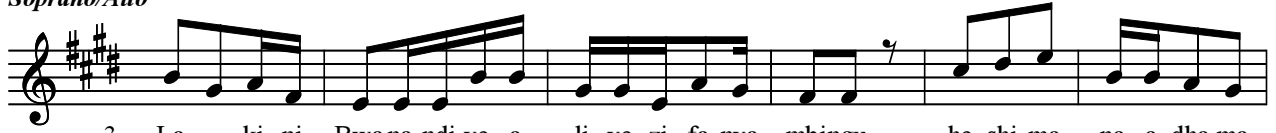


2. Tanga-ze-ni wo - ko-vu wa-ke si - ku kwa si-ku, Na wa-tu wo - te ha-ba-ri za



2. ma - a - ja - bu ya-ke.

Soprano/Alto



3. La - ki-ni Bwana ndi-ye a - li-ye-zi-fa-nya mbingu, he-shi-ma na a-dha-ma



3. zi-ko mbele ya-ke.

Tenor/Bass



3. La - ki-ni Bwana ndi-ye a - li-ye-zi-fa-nya mbingu, nguvu na u - zu-ri zi-mo ka-ti



3. ka pa-ta-ka-ti-fu pa-ke.