

# Naamini

A.A.Kadyugenzi

$\text{♩} = 70$

S  
A

U mo Ye su u me ke ti ka ti kaho sti a ma u mbo ya mka te di va i

T  
B

Musical notation for Soprano and Alto parts, measures 1-7. The music is in 2/4 time with a key signature of two flats (B-flat and E-flat). The Soprano part starts with a quarter note G4, followed by a half note chord of G4-Bb4. The Alto part starts with a quarter note G3, followed by a half note chord of G3-Bb3. The melody consists of eighth and quarter notes.

8

ni we we ni u la po mkate hu u u ta i ngi a kwa ngu

Musical notation for Soprano and Alto parts, measures 8-13. The melody continues with eighth and quarter notes. The Tenor and Bass parts provide harmonic support with chords and single notes.

14

ra fi ki ya - ngu na a mi ni, U, ni.

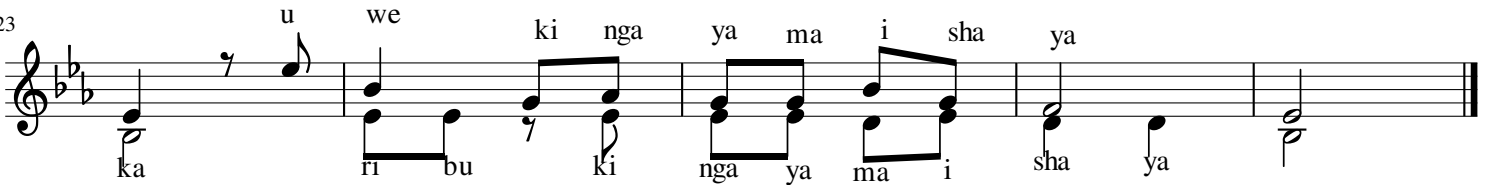
Musical notation for Soprano and Alto parts, measures 14-17. The piece concludes with a double bar line and repeat signs. The Soprano part has a first ending (1.) and a second ending (2.).

19



1.Njo o mo yo ni ka ri  
 2.Na ku hi ta ji mwo ko  
 3.U je ni po nye Ee Bwa

23



u we ki nga ya ma i sha ya  
 ka ri bu ki nga ya ma i sha ya  
 bu zi na ngu.