

FARAJA YA KWELI

Msuhu Richard, S.
2020

16

Kwe nye dhi ki pi a shi da ba do ni na fu ra - a ya
ja po pi ta ka ti ka nji a ya u po to - vu a

Detailed description: This system contains the first five measures of the piece. It features a treble and bass clef with a key signature of three sharps (F#, C#, G#) and a 6/16 time signature. The melody is primarily in the treble clef, with accompaniment in the bass clef. The lyrics are written below the notes.

6

m ki ni Mu ngu yu po a ni pa fu ra ha a ti a
ni fu nu li a ku ra sa za mi ko no ye fa ra ja

ya kwe li a ti a a
ha ki ka fa ra ja ya

Detailed description: This system contains measures 6 through 10. It continues the musical theme established in the first system. The lyrics are written below the notes, with a line break between measure 9 and 10.

11

nu ru pa li po na gi za pi a ni wa po m pwe
ni kwa wa m ngo je a o na ye Mu ngu a ta wa

a
ke - - - -

Detailed description: This system contains measures 11 through 14. It continues the musical theme. The lyrics are written below the notes, with a line break between measure 13 and 14.

15

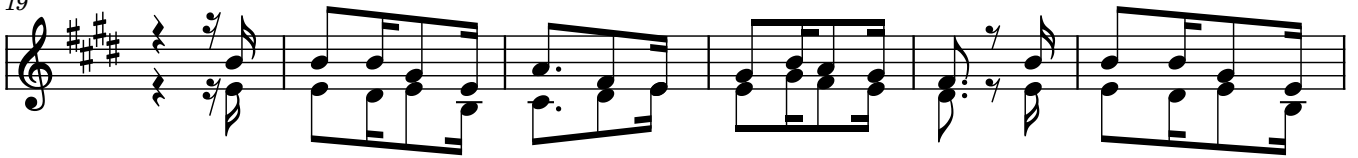
1. 2.

ke Bwa na a na ni fa ri ji Ni tu ku fu
hi fa dhi ka ti ka mba wa ka Ni tu ku fu

Detailed description: This system contains measures 15 through 18. It includes a first ending (1.) and a second ending (2.). The lyrics are written below the notes.

MASHAIRI

19



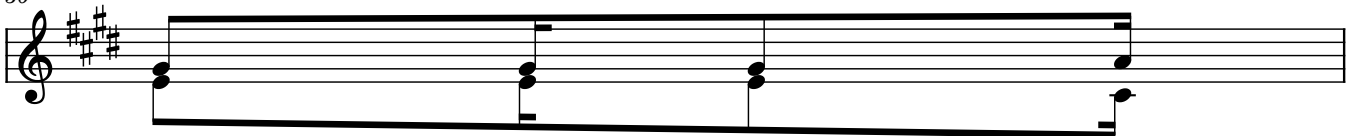
1 Bwa na ni mu i ta po a ni i ti ki a na ni mu o mba
 2 Ni na po ji sa ha u Bwa na a ni gu sa na ni a ngu ka
 3 So te tu sa fa ri ni tu ki m ta fu ta a li se ma mwe

25



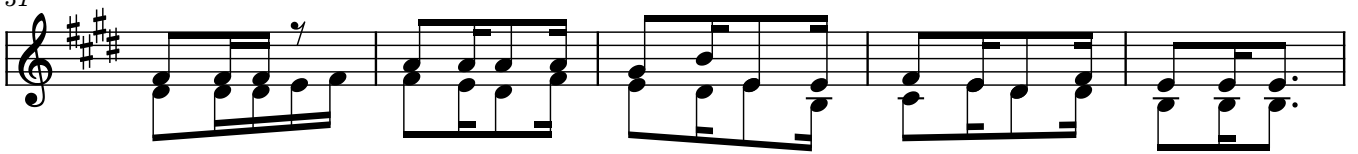
1 po Bwa na a na ni si ki a na a ni si ki a po Bwa na
 2 po Bwa na a na ni i nu a a ni i nu a po Bwa na ha
 3 nye we yu - mo nda ni ye tu tu ja po ka ti ka taa bu tu

30



1 ha ki ku
 2 cho ki ku
 3 m tu ma i

31



1 ni ji bu te na a ni ba ri ki bwa na kwa yo te ni mu o mba yo
 2 fa ri ji mi mi ha ki ka we ma wa ke Mu ngu ha u na ki pi mo
 3 ni ye ye pi a na ka ti ka fu ra ha tu m shu ku ru Mu ngu tu

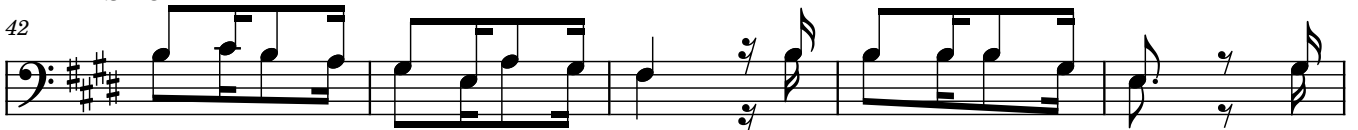
36



I we ni ma ho da ri pi ge ni mo yo ko - nde ni nyi nyo te mu -

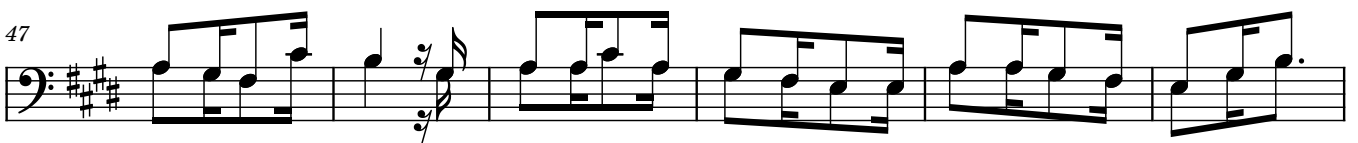
HITIMISHO

42



- m ngo - ja o Bwa - na ye ye ni si ta ra a

47



ta wa hi fa dhi na ma te so ye nu Bwa na a ta ya chu ku a Bwa na

53

A ta wa po nya bwa na m jwa po na ma go njwa a ta wa vi
a ta sa me he pi a ma ko sa ye nu yo te m ki ya ki

ma go njwa bwa na
nu yo te na nyi

58

sha Bwa na m ja po ku wa wa tu pu a ta wa li sha nyo te
ri yo te ma a si m ya te nda yo m ta ka nya ga ha po

63

m ja po pa ta nja a a ta wa nywe sha pi a m pa twa po
pa ta ka ti fu pa ke ye ye a ta wa - pa ngu - vu na
na nja a bwa na
fu pa ke bwa na

68

na ki u
u we za