

Macho Yetu Humwelekea Bwana (Zab 122, (K) 2)

Robert A. Maneno (RAM)
Mbezi Beach, DSM
1st July 2018

Taratibu

Ma - - cho ye - - tu - hu - mwe le ke a Bwa - na

Ma - - cho ye tu - - hu mwe - - le ke a - - Bwa - na -
Ma - - cho ye tu hu mwe le ke a Bwa na

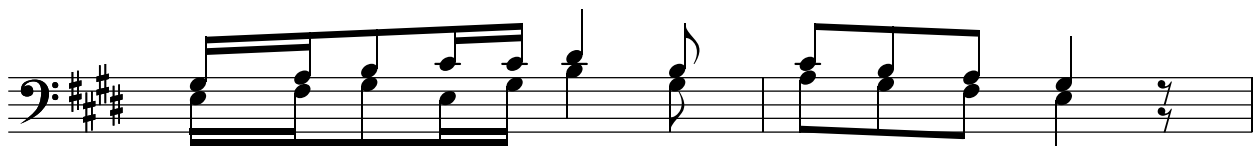
Ma - - cho ye - tu - - hu mwe - - le ke a Bwa - - na

Mu - ngu we tu, Ha ta a ta ka - po

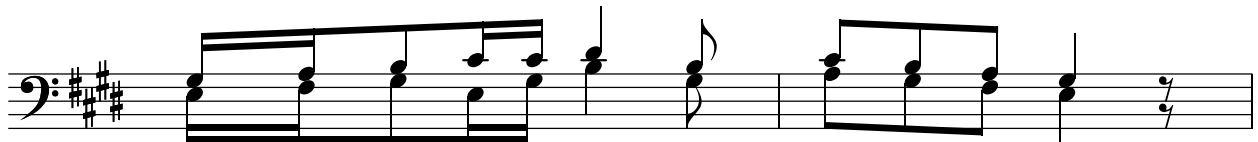
Mu - - ngu we tu, ha ta a ta - - ka po
Mu - ngu wa tu ha - ta, a ta ka - - po

tu re he mu. tu re he mu.

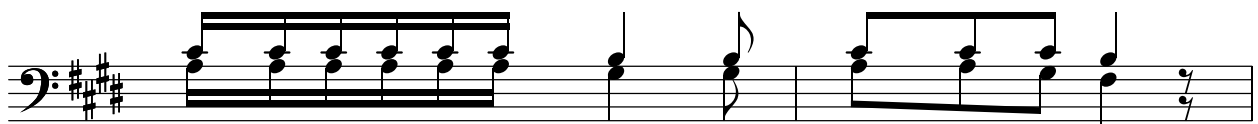
1. tu re he mu. 2. tu re he mu.
tu re he mu. tu re he mu.



1. Ni me ku i nu li a ma cho ya ngu,
2. Kwa - - ma cho - - ya M ja - - ka zi,
3. U - - tu re - - he mu Ee - - Bwa na,
4. Na - - fsi ze - - tu zi me - - shi ba,



1. We we u ke - - ti ye Mbi - - ngu ni,
2. kwa - - mko no - - wa Bi bi - - ya ke,
3. Ee Bwa na u - - tu re he mu si si,
4. zi me shi ba M za hawa we nye ra ha,



1. ka ma vi le ma cho ya wa tu - - mi shi,
2. Hi vyo ma cho ye tu humweleke a Bwana Mungu we tu,
3. kwa ma a na tu me shi ba dha - - ra u,
4. na dha ra - - u ya we nye ki - - bu ri,



1. kwa mko no wa Bwa na - - za o.
2. Ha ta a taka po tu re he mu.
3. tu - - me shi ba dha - - ra u.
4. na dha ra uya we nye ki bu ri