

# **TUNASHUKURU MUNGU KWA YOTE**

**JOHN BOSCO MKINGA**

**Harmonized by ERNESTUS OGEDA**

**02.07.2018**

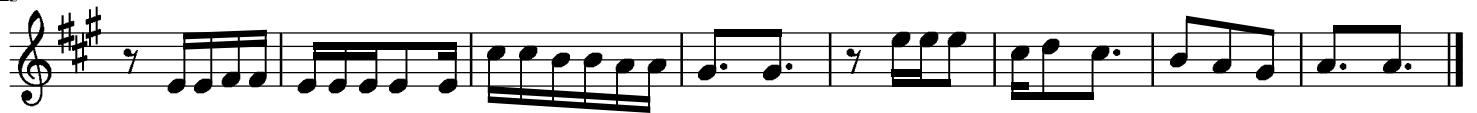
$\text{♩} = 40$

Musical score for the first system, measures 1-7. The score is in 3/8 time with a key signature of two sharps (F# and C#). The melody is written in the treble clef, and the piano accompaniment is in the bass clef. The lyrics are: Tu na ku shu ku ru Mu \_ ngu \_ kwa \_ yo \_ te U na yo tu te nde a si \_

Musical score for the second system, measures 8-14. The score continues in 3/8 time with two sharps. The lyrics are: si. Tu na shu ku ru kwa \_ yo \_ te , U na yo tu te nde \_ a \_ si \_ si. te Bwa na

Musical score for the third system, measures 17-23. The score continues in 3/8 time with two sharps. The lyrics are: Kwama a na bi lawe \_ we ha tuwe zi ki tu , Twashuku ru Mu ngukwa yo te. Twa shu ku ru sa na

25



1. Umetuja li a ka ra ma ya ku ku i mbi a we we Twase ma a sa nte a sa nte Mu ngu.

33



1. Ume tu e pu sha na a ja limba li mba li, Twase ma a sa nte a sa nte Mu ngu.

41



1. Ume tu li nda na fa mi li a ze tu ki la si ku Twase ma a sa nte a sa nte Mu ngu.