

# Macho Yetu

Zab 123 (K) 2

Eric Mwaniki

♩ = 80

S  
A

Ma cho ye tu hu mwe le ke a Bwa na Ma cho ye tu hu mwe ke ke a

T  
B

8

Bwa na Mungu wetu ha ta u ta ka po a ta ka po tu re he mu ha ta a ta ka po  
a ta ka po tu re he mu

15

a ta ka po tu re he mu. ha ta

ha ta a ta ka po a ta ka po tu re he mu  
a ta ka po tu re he mu

22

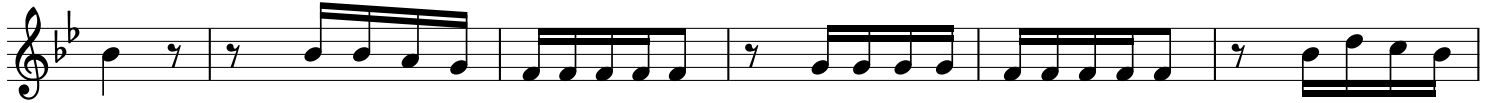
a ta ka po a ta ka po tu re he mu. I.Ni me ku i nu li a ma cho ya ngu we we u ke

28



*ti yembinguni kamavi le ma cho ya watu mi shi kwam ko no wa bwa na za -*

36



*o 2.Ka ma ma cho ya m ja ka zi kwam ko no wa bi bi ya ke hi vyoma cho*

42



*ye tu hu mwele ke a Bwa na, Mu ngu we tu ha ta a ta kapo tu re he mu*

49



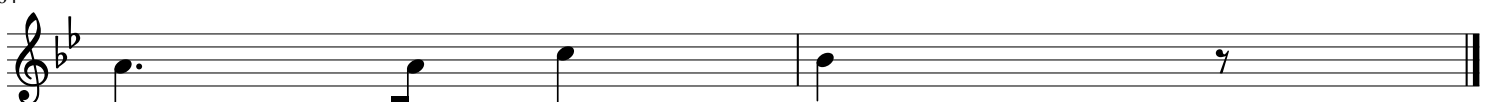
*3.U tu rehe mu E e Bwa na u tu re hemu si si kwama a na tu me shi ba dha*

57



*ra u nafsi ze tu zi meshi ba m za ha wa we nye - ra ha na dha ra u yawe*

64



*nye ki bu ri.*