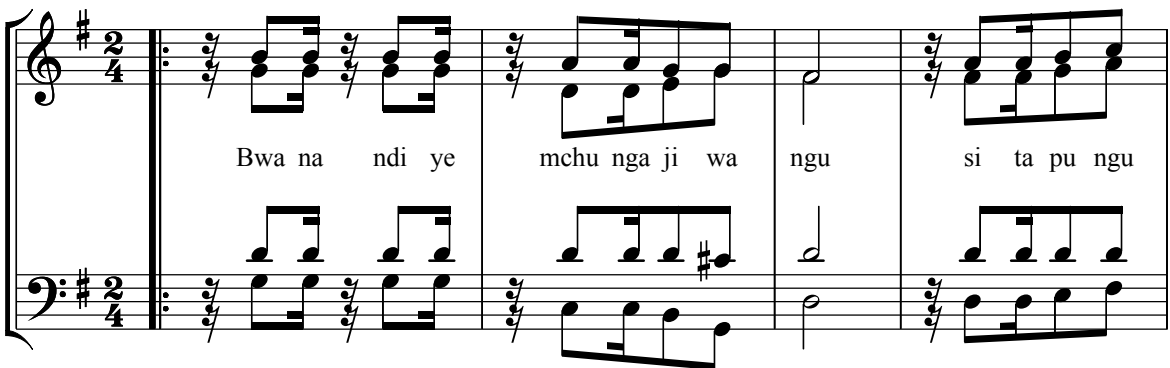


Victor Mapunda

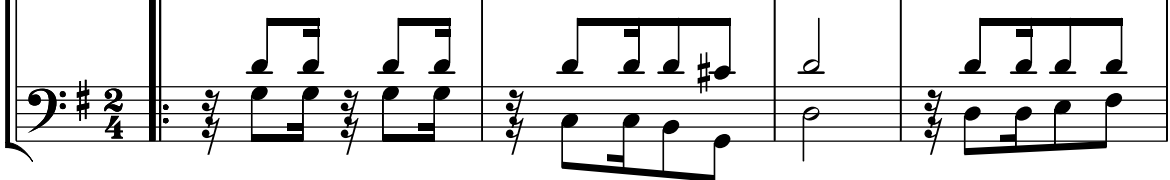
# Bwana ndiye mchungaji wangu

Soprano/Alto

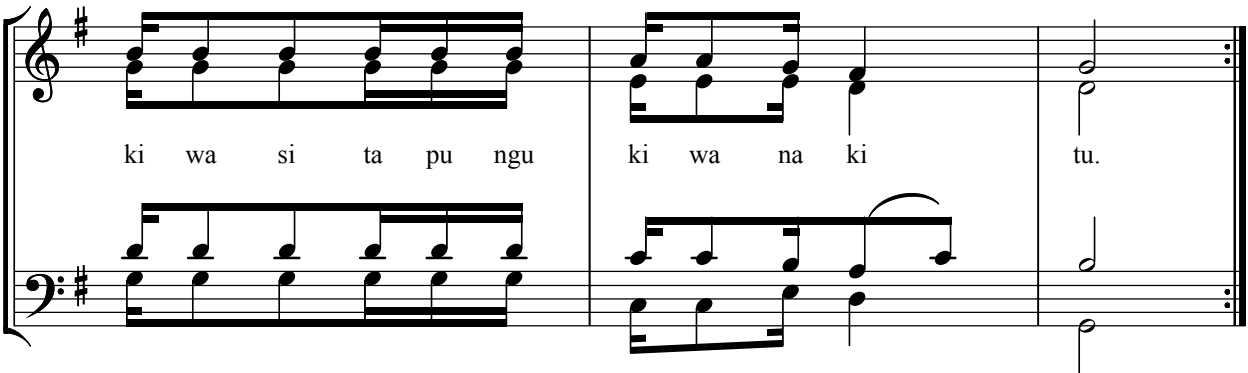


Bwa na ndi ye mchu nga ji wa ngu si ta pu ngu

Tenor/Bass

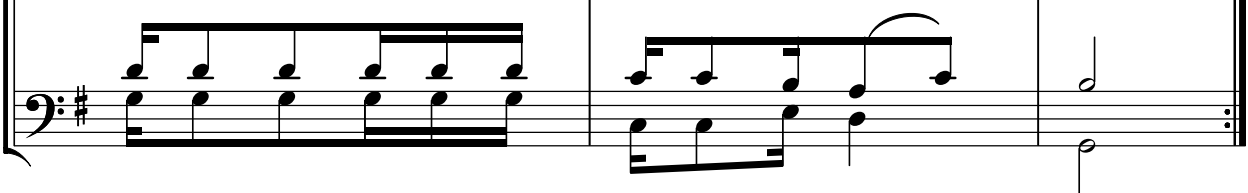


S./A.

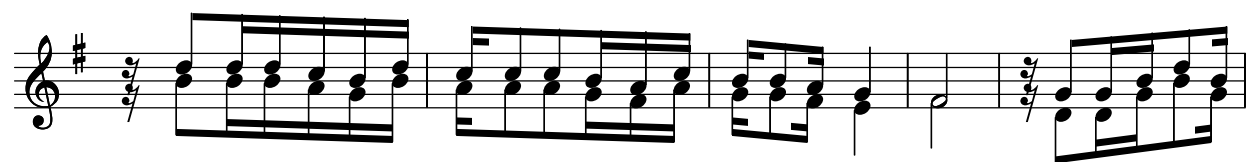


ki wa si ta pu ngu ki wa na ki tu.

T./B.

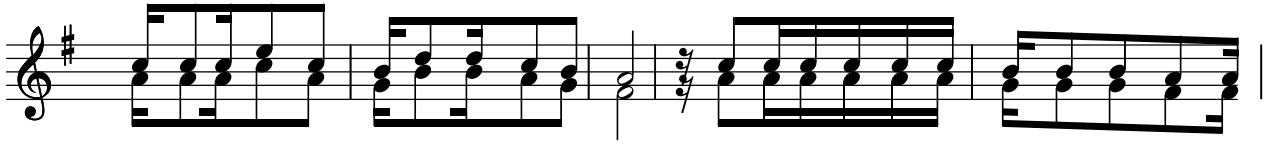


S./A.



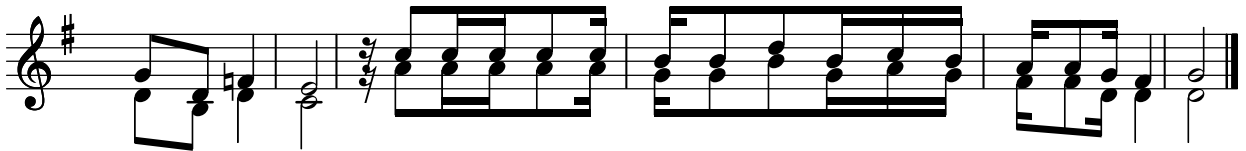
1. Ka ti ka ma li sho ya ma ja ni ma bi chi hu ni la za, ka ndo ya ma ji
2. Ni ja po pi ta ka ti ya bo nde la u vu li wa mau ti, si ta o go pa
3. Wa a nda a me za mbe le ya ngu ma cho ni pa wa te si, u me ni pa ka
4. Ha ki ka we ma na fa dhi li zi ta ni fu a ta mi mi, si ku zo te za

S./A.



1. ya u tu li vu hu ni o ngo - za, hu ni hu i sha na fsi ya ngu na ku
2. si ta o go pa o go pa ma ba ya, kwa ma a na we we Bwa na u po pa
3. ma fu ta ki chwa ni ki chwa ni pa ngu, na ki ko mbe cha ngu ki ko mbe cha ngu
4. ma i sha ma i sha ma i sha ya ngu, na mi ni ta ka a nyu mba ni mwa Bwa

S./A.



1. ni o ngo za, ka ti ka nji a za ha ki kwa ji li ya ji na la ke.
2. mo ja na mi, pe mbe ya ko na fi mbo ya ko Bwa na vya ni fa ri ji.
3. cha fu ri ka, na ki ko mbe cha ngu ki ko mbe cha ngu ki na fu ri ka.
4. na mi le le, na mi ni ta ka a nyu mba ni mwa Bwa na mi le le