

SIKU YA TAABU YANGU.

Zab. 77 : 1 - 6.

Regnald (Musa) Mbughi.

13.04.2016:DSM.

Allegro

Ni-m-pa - zi - e Mu-ngu sa - u - ti, ni-m-pa - zi - e Mu-ngu sa - u - ti ya - ngu

na-ye a-ta-ni-si - ki a. Ni-m-pa ki a. Si-ku ya ta-a-bu

ya - ngu, na - li - m - ta - fu - ta Bwa - na; M ko no wa - ngu,

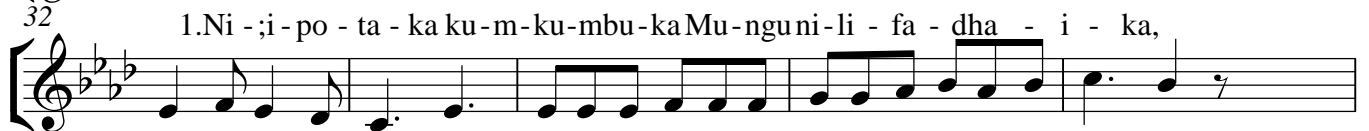
u - li - nywo - shwa u si - ku, ha - u - ku le ge - a, na - fsi ya - ngu

i - li - ka - ta - a ku fa - ri - ji - ka. ji - ka.

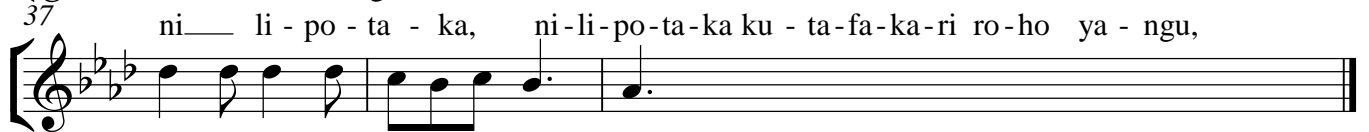
2 27



1. Ni - ;i - po - ta - ka ku - m - ku - mbu - ka Mu - ngu ni - li - fa - dha - i - ka,



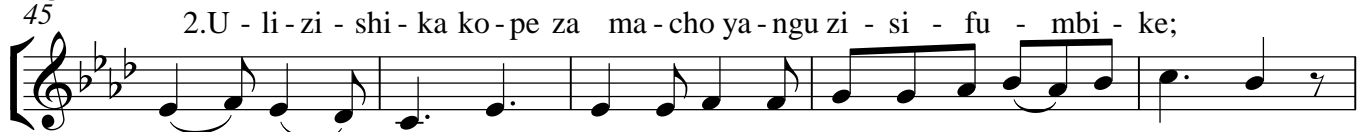
ni - li - po - ta - ka, ni - li - po - ta - ka ku - ta - fa - ka - ri ro - ho ya - ngu,



ro - ho ya - ngu i - li - zi - mi - a.



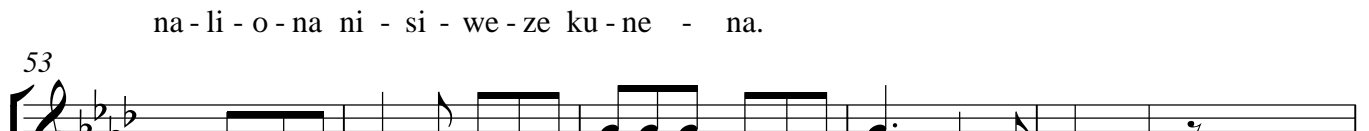
2. U - li - zi - shi - ka ko - pe za ma - cho ya - ngu zi - si - fu - mbi - ke;



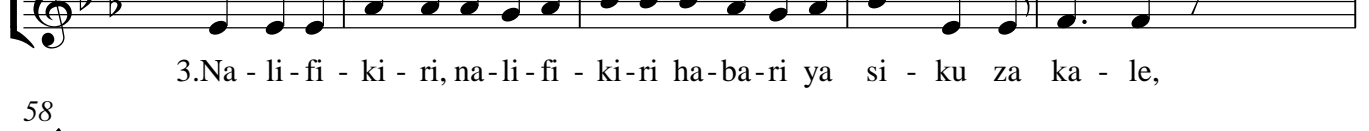
na - li - o - na, na - li - o - na ma - sha - ka ni - si - we - ze,



na - li - o - na ni - si - we - ze ku - ne - na.



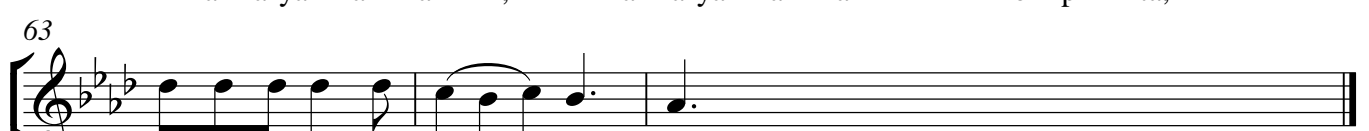
3. Na - li - fi - ki - ri, na - li - fi - ki - ri ha - ba - ri ya si - ku za ka - le,



mi - a - ka ya za - ma - ni, mi - a - ka ya za - ma - ni zi - li - zo - pi - ta,



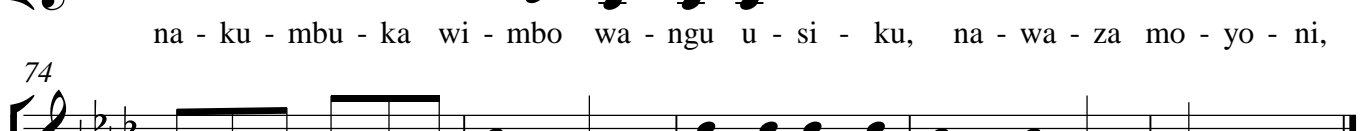
za - ma - ni zi - li - zo - pi - ta.



4. Na - ku - mbu - ka, na - ku - mbu - ka wi - mbo wa - ngu u - si - ku,



na - ku - mbu - ka wi - mbo wa - ngu u - si - ku, na - wa - za mo - yo - ni,



na - wa - za mo - yo - ni mwa - ngu, na - fsi ya - ngu i - ka - ta - fu - ta.

