

NAKUINULIA NAFSI YANGU

zab 25:4-5,8-9,10 na 14(k)1

ABRAHAM, RUGIMBANA

26-11-2018, DCDMA

Copied by: victormwafrika

moderato! / katicati dom 1 mwaka c Majilio

S
A

Ee Bwa na (Bwana) na ku i nu li a na - fsi ya ngu, ya ngu, na ku

T
B

Ee - Bwa na Bwa na

Detailed description: This system contains the first two staves of the musical score. The Soprano (S) and Alto (A) parts are written on a treble clef staff with a key signature of one flat and a 4/4 time signature. The lyrics are: "Ee Bwa na (Bwana) na ku i nu li a na - fsi ya ngu, ya ngu, na ku". The Tenor (T) and Bass (B) parts are written on a bass clef staff. The lyrics are: "Ee - Bwa na Bwa na". There are first and second endings marked with "1." and "2." and repeat signs.

(Bwa na)

i nu li a na fsi ya ngu na ku i nu li a na fsi ya ngu, (Bwa na) na ku

Detailed description: This system contains the second two staves of the musical score. The Soprano (S) and Alto (A) parts are written on a treble clef staff. The lyrics are: "i nu li a na fsi ya ngu na ku i nu li a na fsi ya ngu, (Bwa na) na ku". The Tenor (T) and Bass (B) parts are written on a bass clef staff. There are first and second endings marked with "1." and "2." and repeat signs.

i nu li a na fsi ya ngu, na ku ngu.

Detailed description: This system contains the third two staves of the musical score. The Soprano (S) and Alto (A) parts are written on a treble clef staff. The lyrics are: "i nu li a na fsi ya ngu, na ku ngu.". The Tenor (T) and Bass (B) parts are written on a bass clef staff. There are first and second endings marked with "1." and "2." and repeat signs.

1. Ee Bwa na u ni ju li she nji a za ko, u ni fu ndi she ma pi to ya ko
U ni o ngo ze ka ti ka kwe li ya ko

Detailed description: This system contains the final two staves of the musical score. The Soprano (S) and Alto (A) parts are written on a treble clef staff. The lyrics are: "1. Ee Bwa na u ni ju li she nji a za ko, u ni fu ndi she ma pi to ya ko" and "U ni o ngo ze ka ti ka kwe li ya ko". The Tenor (T) and Bass (B) parts are written on a bass clef staff. There are first and second endings marked with "1." and repeat signs.

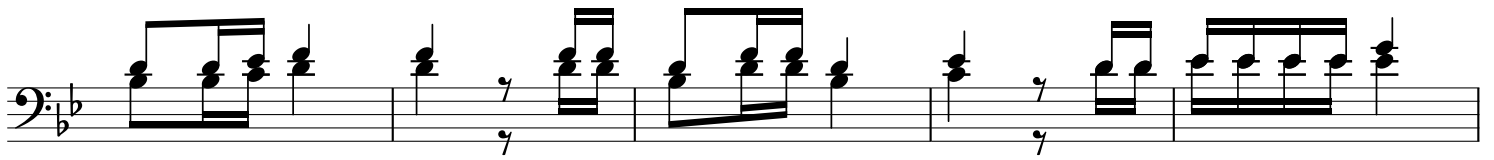
Na ku ni fu ndi sha na na ku ni fu ndi sha. 2.Bwa na yu mwe ma,

mwenye a di li, kwa - hi yo a ta wa fu ndi shanji a wenye dha mbi
We nye u po le a ta wa o ngo za ka ti ka hu ku mu

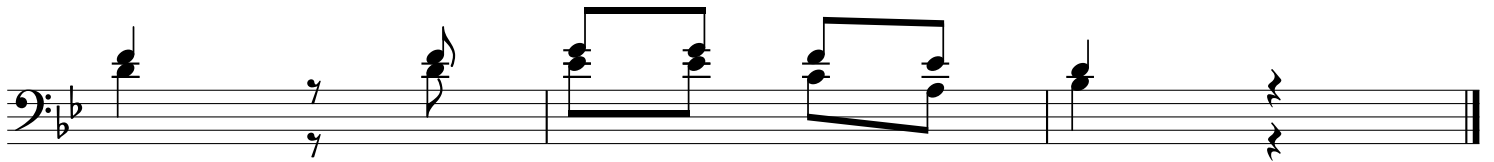
We nye u u po le a ta wa fu ndi - sha - nji a ya ke

3.Nji a zo te za Bwa na ni fa dhi li nakwe li, kwa o wa li shi

ka o a ga no la ke, na shu hu da za ke.



4.Si ri ya Bwa na, i ko kwa wa m cha o, na ye a ta wa ju li



sha, A ga no la - ke.