

# MISA UPENDO

J. C. SHOMALY  
St. Paul's Students Choir  
University of Nairobi

*copied by Martin Munywoki*

♩=62

## 1. UTUHURUMIE

Bwa na Bwa na u tu hu ru mi e ee - ee

ee

Detailed description: This system contains the first two staves of music. The top staff is in treble clef and the bottom staff is in bass clef. Both are in the key of D major (two sharps) and 4/4 time. The melody consists of eighth and quarter notes, with some rests. The lyrics are written below the notes.

4 Ee Bwa na, ee Bwa

Bwa na u tu hu ru mi e Ee Bwa na

Ee Bwa - na Bwa - na ee Bwa -

Detailed description: This system contains the next two staves of music. It begins with a measure rest of 4 measures. The melody continues with eighth and quarter notes. The lyrics are written below the notes.

7 na ee Bwa na Bwa na **Fine**

Ee Bwa - na ee Bwa na ee Bwa na u tu hu ru mi e Bwa - na

-na Bwa - na e Bwa na Bwa na

O  
R  
G  
A  
N

Detailed description: This system contains the final two staves of music. It begins with a measure rest of 7 measures. The melody concludes with a double bar line and repeat dots. The lyrics are written below the notes. The word 'Fine' is written above the final measure. The organ part continues with a simple accompaniment.

10 Kri - stu - Kri - stu u tu hu ru mi e Kri - stu  
 Kri - stu Kri - stu u tu hu ru mi e ee Kri - stu  
 Ee Kri - stu Ee Kri - stu Kri - stu ee Kri - stu Kri - stu  
 E we Kri - stu Kri - stu - Kri - stu Kri - stu Kri - stu

13 1. 2. **D.C. al Fine**  
 (Kri - stu) u tu hu ru mi e (Kri - stu) u tu hu ru mi - e

# 2. UTUKUFU

MISA UPENDO

J C SHOMALY

16 ♩=100

U tu ku fu kwa Mu ngu ju u (u tu ku fu) na a ma

U tu ku fu

Detailed description: This system contains measures 16, 17, and 18. It features a treble and bass staff in G major. Measure 16 starts with a treble staff and a whole rest in the bass. Measures 17 and 18 have both staves. The lyrics are: U tu ku fu kwa Mu ngu ju u (u tu ku fu) na a ma. The bass line has 'U tu ku fu' below measures 17 and 18.

19

ni du ni a - ni kwa wa tu wo te we nye ma pe nzi i yo o wa tu

wa tu wo te pe nzi me ma

kwa wa tu wo te ma pe nzi me ma kwa wa tu

Detailed description: This system contains measures 19, 20, 21, and 22. Both staves are active throughout. The lyrics are: ni du ni a - ni kwa wa tu wo te we nye ma pe nzi i yo o wa tu. The bass line has 'wa tu wo te pe nzi me ma' below measures 20 and 21, and 'kwa wa tu wo te ma pe nzi me ma kwa wa tu' below measures 22 and 23.

23

wo te we nye ma pe nzi ma pe nzi me ma

(wa tu wo te) (u tu ku fu)

wo te

1. 2.

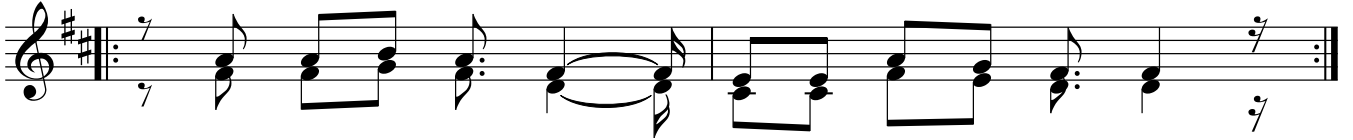
U tu ku ma

O R G A N

Detailed description: This system contains measures 23, 24, and 25. It includes first and second endings. The lyrics are: wo te we nye ma pe nzi ma pe nzi me ma. The bass line has '(wa tu wo te) (u tu ku fu)' below measures 23 and 24, and 'wo te' below measure 25. The first ending leads to measure 24, and the second ending leads to measure 25. The lyrics 'U tu ku ma' are positioned above the first ending. The word 'ORGAN' is written vertically on the right side of the page.

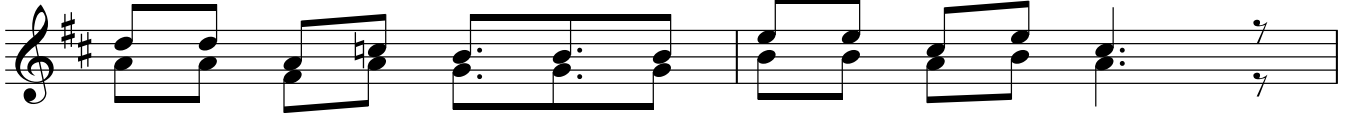
## MASHAIRI - UTUKUFU

27



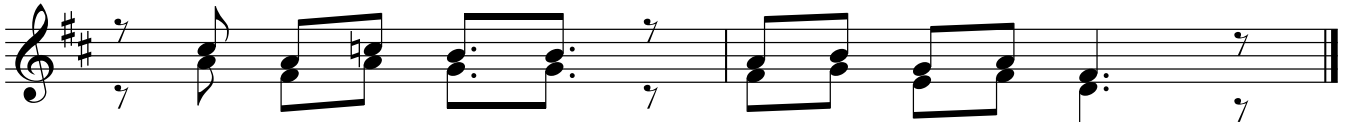
1. Tu - na ku si fu, tu na ku he shi mu,  
Twa ku a bu du, - tu na ku tu ku za,
2. Ee Bwa na Mu ngu, Mfa lme wa mbi ngu ni,  
Mu - ngu Ba ba, - Mu ngu Mwe - nye zi,
3. Mwa na ko ndo o, Mwa na wa ke Ba ba,  
U o ndo a ye, - dha mbi za du ni a,
4. Mwe nye ku ke ti, ku u me kwa Ba ba,  
Tu hu ru mi e, - u tu hu ru mi e
5. Pe ke e Bwa na, Mku u Ye su Kri stu,  
Pa mo ja na ye, - Ro ho Mta ka ti fu,

29



1. Tu na ku shu ku ru Mu ngu kwa a ji li,  
2. Bwa na Ye su Kri stu, Mwa na wa pe ke e,  
3. U tu hu ru mi e, u tu hu ru mi e,  
4. Kwa ku wa kwa ku wa, ndi we pe ke ya ko,  
5. Ka ti ka ka ti ka, u tu ku fu wa ke,

31



1. Ya u tu ku fu wa ko m ku u  
2. Ee Bwa na Mu ngu, ee Bwa na Mu ngu.  
3. Po ke a o mbi, le tu ee Bwa na.  
4. M ta ka ti fu, M ta ka ti fu.  
5. Mu - ngu Ba ba, A - mi na!

### 3. MTAKATIFU

MISA UPENDO

J C SHOMALY

33  $\text{♩} = 84$

Mta ka ti fu, Mta ka ti fu Bwa na, Mu ngu wa ma je shi,  
Mu ngu

36

Mu ngu wa ma je shi, Mbi ngu na du ni a zi me ja a u tu ku fu wa - ko

40  $\text{♩}$  Ho sa nna Ho sa nna

Ho sa nna ho sa nna ho sa nna ho sa nna ho sa nna ho sa nna  
Ho sa - nna Ho sa -

42 Ho sa nna ju u Ho - 1.

sa nna ho sa nna ho sa nna o o Ho  
 nna ho sa nna ho o o sa nna ju u mbi ngu ni

44 2. **Fine**

sa nna ju u mbi ngu ni

46 **D.S. al Fine**

Mba ri - ki wa a - na ye ku ja, kwa ji - na la Bwa na

## 4. MWANAKONDOO

MISA UPENDO

J C SHOMALY

50  $\text{♩} = 72$

Mwa na ko ndo - o - wa - Mu ngu u - o ndo a - ye -

53

dha mbi za du ni a Ee Mwa - na tu hu ru mi - e

56

Mwa - na ko ndo o Mwa na wa Mu ngu u o ndo a ye dha mbi dha mbi

59

za du ni a, tu pe a ma ni tu pe a ma  
a ma ni

62

ni u tu pe a ma ni tu ni