

# BWANA ATAWABARIKI

(kktkt ubatizo wa Bwana)

BY PETER MSIMBE  
NZEGA-PARISH  
JANUARY 2019

$\text{♩} = 70$

Bwa— na a tawa ri wa tu kwa a ma ni a tawa ba ri ki

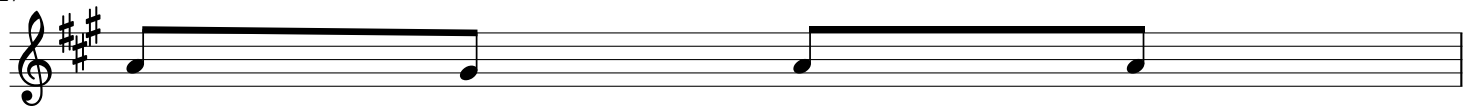
8  
wa tu wa ke kwa a ma ni ni

12  
1.(a) Mpe ni Bwa na e nyi wa na wa Mu ngu m pe ni Bwa na  
(b) m pe ni Bwa na utu ku fu wa jina la ke mwabudu ni Bwa na

18  
u tu ku fu na ngu vu  
kwau zuri wau ta ka ti fu

20  
2.(a) Sauti ya Bwa na i ju u ya— ma ji Bwa na yu ju u ya ma ji  
(b) Sau ti ya Bwa na sa u ti i na ngu vu sa u tiya Bwa na i na a

27



me \_\_\_\_\_  
dha \_\_\_\_\_

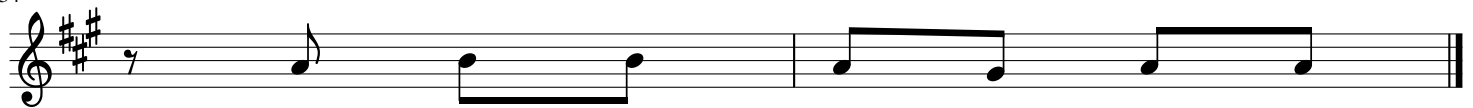
ngi \_\_\_\_\_  
ma \_\_\_\_\_

28



1.(a)Sauti ya Bwa na eyawa za li sha a ya la na ndani yahe ka lu  
(b)Bwana a li ke ti ju u ya gha\_ ri ka Bwa na ame ke ti

34



lake wote wana sema utu ku fu  
nim fa lme mi le le\_\_\_\_\_