

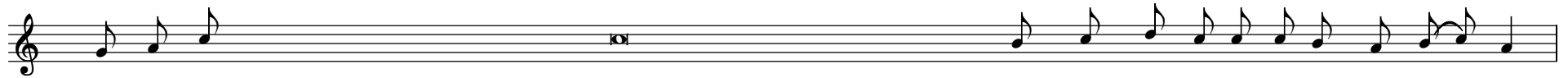
MBIU YA PASKA



SA SA MA-JESHI=LA=MALAIKA WAMBI NGU NI WA FURA--HI TU SHA-- NGILI E=WAKATI=WA=IBADA=HII



U SI--KU, NA TA RU MBE TA LA WO KO--VU, LI--TA NGA ZE USHINDI=WA MFA-LME MKU U VI--LE,



HA TA DU - -NIA==ILIYOANGAZWA==KWA==NURU==KUBWA NA MNA HI YO I JA E FU RA-- HA



NA U - - LIMWENGU=WOTE,=ULI OANGAZWA=KWA=UTUKUFU=WA=MFALME WA MI LE - LE



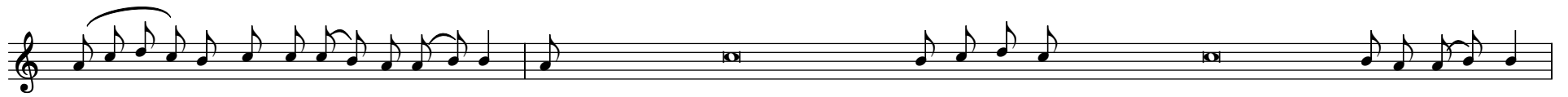
U O NE--YA KU--WA- U--ME O NDO--LE- WA GI--ZA-- A FU RA--HI=NA=MA MA KA NI SA



ALIYEPAMBWA=KWA=UZURI=WA=MWANGA MKU BWA VI--LE NA-- - - NYU-- - - MBA HII



I--VU ME SA U--TI YA WA-- - - TU NDI YO-- - MAANA==NINYI==NDUGU==ZANGU



HU- - - O NDI O U - - SI - - KU- U-LIOWATOA==KWANZA== BABA ZE TU WANA==WA==I SRA== E LI MI - - SRI



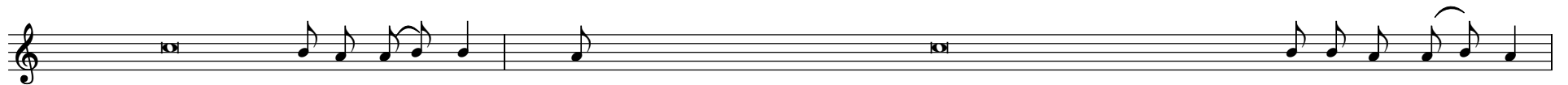
U - KAWAVUSHA PA - - KA - - VU KA TI KA BA - - HA - - RI YA SHA M



BA - - SI - - HU O NDI O U - - SI - - KU U - LI OONDOA==GI - ZA YA DHA - - MBI



KWA==MWANGA==WA==MNA- - RA WA MO-- TO HU O==NDI - - O U - - SI - - KU A-MBAO==POPOTE== DU NI A NI



WENYE==KUMSA-DI KI KRI-- STU WA-NATENGWA==LEO==NA==MAOVU==YA==DUNIA,== GI ZA YA DHA-- MBI



NA KURU - DI SHI - - WA NE E MA NAKU - PA TA U - - TA KA - - TI - - FU HU - - - NDI - - O U - - SI - - KU



KRI - STU==ALIPOVUNJA==VIFU - NGO VYA MA U - - TI AKATOKA KA BU RI NI MZI - - MA - - MSHI NDA - - JI



OH - - - WEMA==WA - KO - - KWE - - TU U LI O - - WA A - - JA - - BU



WE - MA==GANI==WA==UPENDO==WAKO==USI - O PI - - MI - - KA KWAMBA==UKAMTO - A MWA NA O



AWAKO - MBO - - E WA - - TU - - MWA KWE LI LA ZI MA DHA MBI YA - - A DA M



ILIYOONDO - LE WA KWA KI - - FO - - CHA KRI - - STU OH - - - KOSA==LE - NYE - - HE - - RI



LI LI LO STA HI LI KUMPATA==MKOMBOZI MKU U KA--MA HU--YO OH- - - U SI KU==WENYE==HERI - - KWE--LI



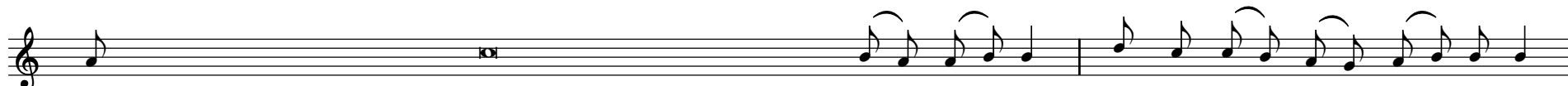
U-LI O STA HI LI ==PEKE==YAKE,==KUJUA==SAA==NA== WA--KA--TI, KRI STU A LI PO FU FUKA--KA--BURI - - NI



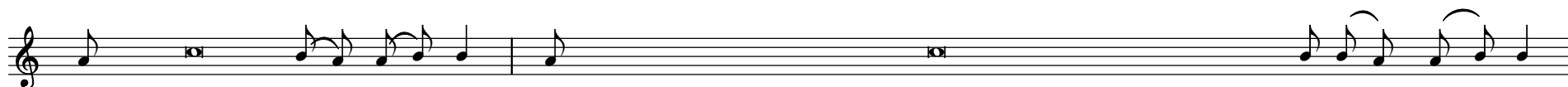
HU O NDI O U - SIKU==ULIOA - NDI - - KI - - WA U - SIKU==UTAANGAZWA==KA - MA - - MCHA - - NA



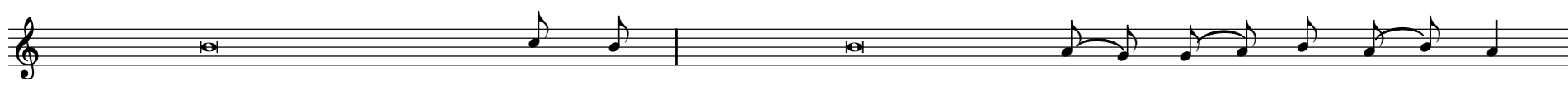
NA==USIKU== NDI O MWA NGA KATIKA FU - - RA - - HA YA - - NGU



KWA SABABU==HIYO,==UTAKATI FU==WA==USI - KU - - HU - - O WA FU KU - - ZA - - MA - - O VU



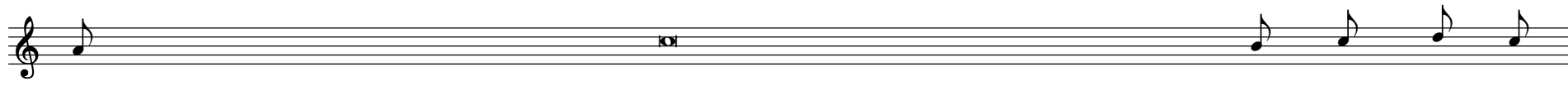
WA - SAFISHA MA - - KO - - SA WA - RUDISHA==UTAKASO==KWA==WALE==WALI - O A - - NGU - - KA



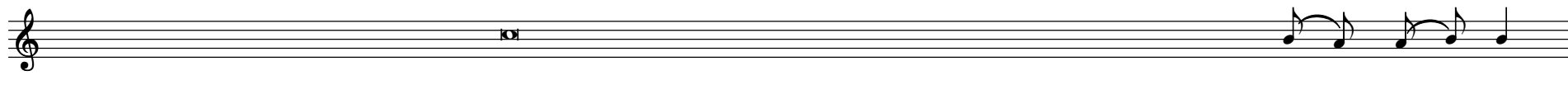
NA==FURAHA==KWA== WA LE WALI OKUWA NA - - SI - - KI TI - - KO



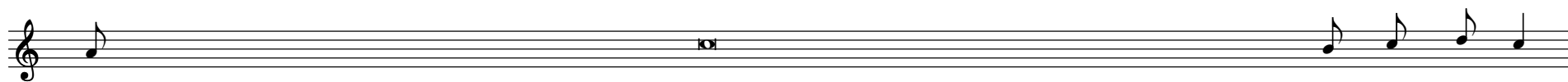
WA FU KU - - ZA - - CHU - - KI WA LE TA=MA - PA - - TA - - NO NA=WENYE=MAKUU=HU-WA - - NYE - - NYE KE - - SHA



BA - SI =KWA=SABABU=YA=NEEMA,=YA=U - SI KU HU U



UPOKEE,==EE==BABA==MTUKUFU,==SADAKA==YA==JIONI ==YA==UBA - NI - - HU - - U



A - MBAYO=KANI SA=TAKATI FU=I NAKUTOLEA=KWA=MI KONO=YA=WATU - MI SHI WA KE



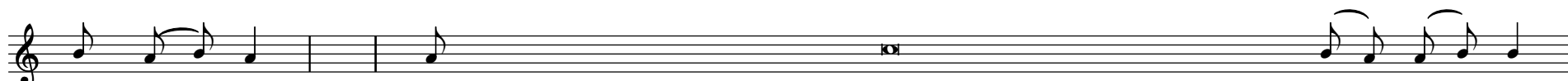
KA - TIKA=TOLEO=TUKUFU=LA=MSHU - MA-A HU- - U U-LIOFA - NYI KA KWA N - - TA - - YA NYU- - KI



NA SASA=TWAFHAMU=UBORA=WA=MNA-RA- - HU- - U U-NAOWAKA-MO TO KWA HE SHI - - MA - - YA MU - - NGU



NA - MOTO=HUO=INGI WA=UMEGA - WA- - NYI - - KA HA-U - KU PU NGU A NA=KWA=KUWASHA=MI - O - - TO - -



MI NGI - - NE KWA - MAANA=WALI SHWA=KWA=NTA=YENYE=KU - YE - - YU - - KA



I - LIYOTENGenezwa=NA=MA - MA - - NYU - - KI, KUWA=UMBO=LA= TA A HI - - YO NZU - - RI



OH- - USI KU==YENYE==HE - RI - - KWE - - LI U - LI WANYANG'ANYA==WA==MI - SRI - - MA - - LI



UKAWAFANYA=TAJI - RI - - WA - - YA HU - - DI

U - SI KU=AMBAO=UNAUNGANI SHA=MBI NGU=NA= DU - - NI - - A TE NA MU - - NGU - - NA WA - - TU

BA-SI==TWAKUO-MBA EE - - BWA - - NA I - LI=MSHUMAA=HUU,=ULI OBARI KI WA= KWA HE SHI MA YA JI NA - -

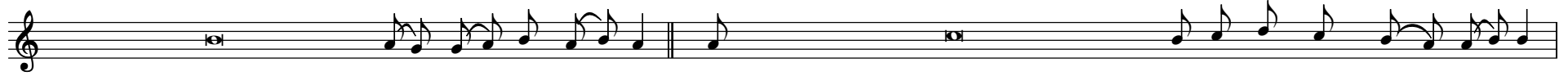
LA - - KO, U - ENDELEE= KU - - WA - - KA U - PATE==KUFU - KU ZA GIZA=YA= U - - SI - - KU HU - - U

TE - NA==UPOKEE==KAMA==HARU - FU - - TA - - MU U - UNGANE==NA= MWA - - NGA - - WA MBI - - NGU

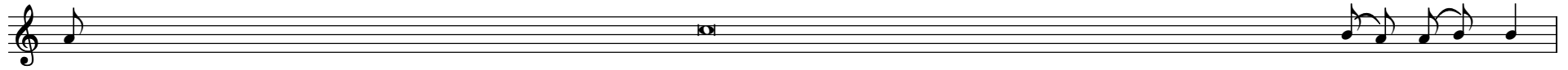
NYO - - - TA YA A SU BU - - HI I KU TE MOTO==WA - KE - - U - - KI WA - - KA

YA - ANI==NYOTA==ILE==A - SU - - BU - - HI, I SI YO - - TU - - A KA - - MWE

NDI - YE==YULE==ALIYETO - KA KU - - ZI - - MU, AKAWA - A NGA ZI A WANADAMU KWA - - U - - TU LI - - VU



WAO=PAMOJA=NA=WA-TU-- WA-- KOWO-- TE KWA AJILI ==YA==BWANA==WETU== YE SUKRI STUMWA-- NA-- O



A - NAYEISHI ==NA==KUTAWALA==NAWE,==KATIKA==UMOJA==WA==ROHO==MTAKATI - FU-- MU-- NGU



MI LE LE - - NA - - MI LE - - LE A MI - - NA

Fideli Nyundo. Kipalapala Seminary. 13.05.1977

(Balthasar Sungi, 14.03.1989. Kipalapala)

*Typed by Dr. A. X. Matofali
SUA-Morogoro*