

AMESHINDA MAUTI

BY MMBAGO C.M
ST. JOHN KISHILI- IGOMA

a) Bwana ka fu fu ka tu i mbe a le lu ya a le lu ya tu i mbe
b) Wana da mu wo te njo ni tu mu i mbi e Bwana Yesu a li ye

5

a le lu ya a le lu ya tu i mbe a le lu ya a me shi nda ma u ti
shi nda ngu vu za ku zi mu tu me ko

9

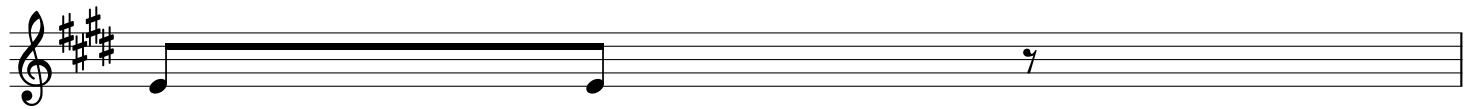
mbo le wa wo te

MASHAIRI

11

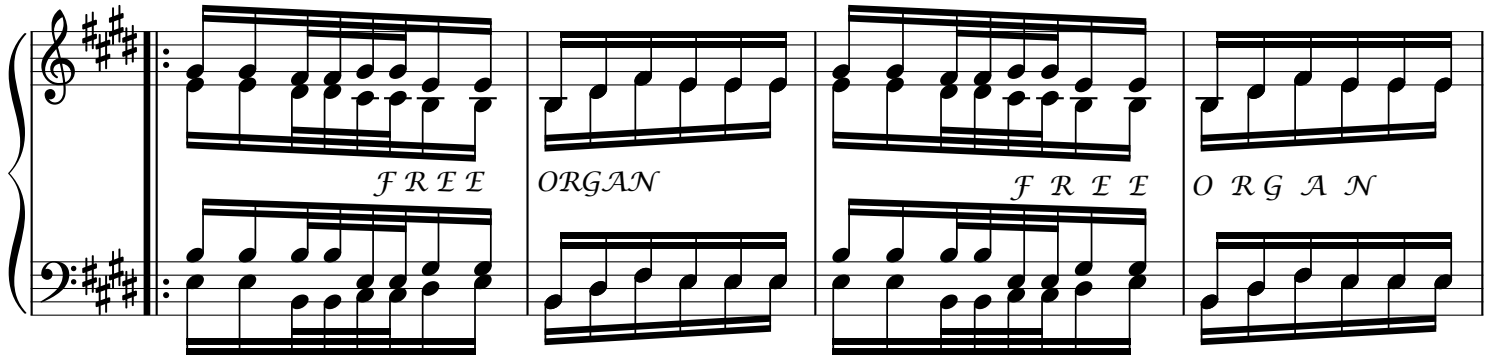
1. Kwaku fu fu ka kwa Bwana we tu Yesu kristo tu me ko mbo le wa na
2. Kwaku fu fu ka kwa Bwana we tu Yesu kristo tu me ta ka swa na kuwa
3. Kwaku fu fu ka kwa Bwana we tu Yesu kristo tume fa nyi ka vi u mbe

15



dha mbi.
 hu ru.
 vi pya.

16



20



NB;Kabla ya kuingia katika beti tumia free organ iliyochorwa pia baada ya beti kumaliza,vivyo hivyo tumia free organ

*TUUTUNZE NA KUENZISI MUZIKI MTAKATIFU
 WA KIKATOLIKI*

*Copied by Paul Lalida Peter
 paulpierre953@gmail.com*

*0755247347
 Makumira-Arusha*