

# SHAMBA LA MZABIBU

ESSAU LUPEMBE  
YERUSALEM-PERAMIHO  
0768 052 092

$\text{♩} = 67$

Piano

Sha mba la m za bi bu sha mba la ma za bi bu la m za bi bu la  
sha mba la m za bi bu la m za bi bu la

6

Pno.

Bwa na ndi yo Nyu mba ya I sra e li  
Bwa na la m za bi bu ndi lo Nyu mba ya I sra e li

12

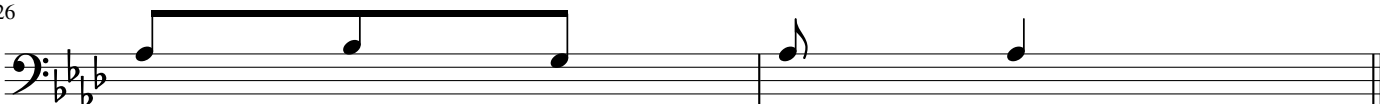
1.U li le ta m za bi bu ku to ka Mi sri u li wa fu ku za mata i fa u ka u

19

pa

20

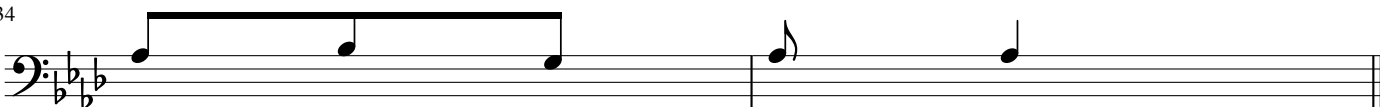
2.U li e ne za ma ta wi ya ke ha ta ba ha ri ni na vi chi pu ki zi vyake ha ta

26 


ku na ko m

28 

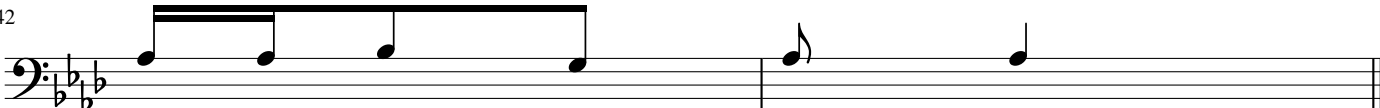
3.Kwani ni u me zi bomo a ku ta za ke kwa ku chu ma wo te wa pi

34 


ta o nji a ni

36 

4.Nguru we wa m si tu ni wa na u ha ri bu na ha ya wi wa konde ni

42 

wa na u ta fu na

44 

5.Ee Mu ngu wa ma je shi twaku si hi u ru di u ta za me to ka juu u o - ne -

50 

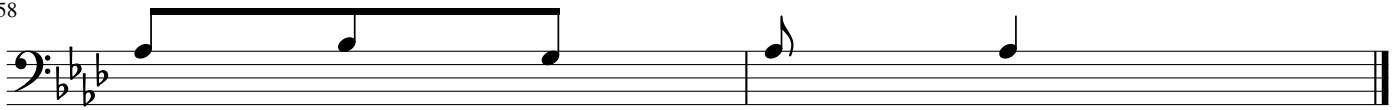
uu ji li e m za bi bu

52



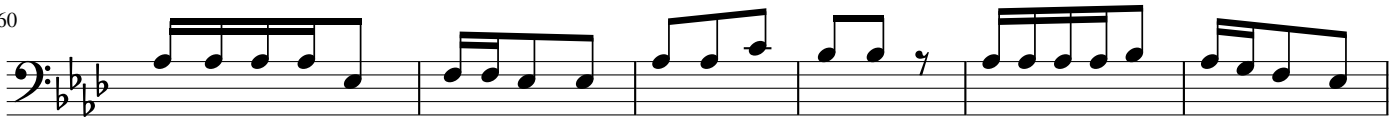
6. Basi ha tu ta ku a cha kwaku ru di nyu ma tu hu i she na si tu ta li i ti a

58



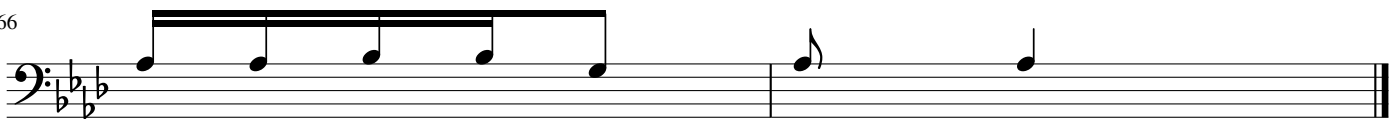
ji - na la ko

60



7. Ee Bwa na Mungu wama je shi u tu ru di she u a nga zi e u so wa ko

66



na si tu ta o ko ka