

NITAONDOKA

By: Seraphin T. Kimario
SIO KIMAU - KENYA
July 2016

Musical notation for the first system of the song. It consists of a treble clef staff and a bass clef staff, both in 4/4 time and key of D major. The melody is written in the treble clef, and the accompaniment is in the bass clef. The first measure is a repeat sign. The second measure has a first ending bracket labeled '1.'. The third measure has a second ending bracket labeled '2.'. The lyrics are: Ni ta o ndo ka - ni ta kwe nda kwa Ba ba ya - ngu mi - mi - kwa Ba ba ya - ngu

Musical notation for the second system of the song. It consists of a treble clef staff and a bass clef staff, both in 4/4 time and key of D major. The melody is written in the treble clef, and the accompaniment is in the bass clef. The lyrics are: Na ku mwa mbi - a Ba ba ba ba Ni me ko - sa ju u ya mbi ngu na mbe le ya ko.

Musical notation for the third system of the song. It consists of a treble clef staff in 4/4 time and key of D major. The melody is written in the treble clef. The lyrics are: 1 • E Mu ngu u ni re he mu sa wa sa wa na fa dhi li za ko ki a wi ngi wa re he ma za ko u ya fu te ma ko

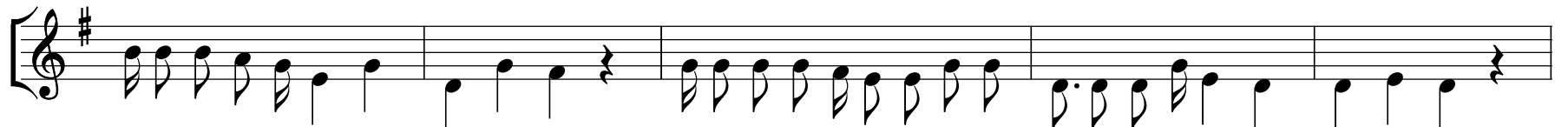
1 • E Mu ngu u ni re he mu sa wa sa wa na fa dhi li za ko ki a wi ngi wa re he ma za ko u ya fu te ma ko



sa ya ngu u ni o she ka bi sa na u o vu wa ngu; na dha mbi ya ngu i mbe le ya ngu da i ma.



2 • E Mu ngu u ni u mbi e mo yo sa fi u i fa nye u pya ro ho i li yo tu li a nda ni ya ngu.



u si ni te nge na u so wa ko wa la Ro ho ya ko ta ka ti fu u si ni o ndo le - e



3 • E Bwa na u i fu mbu e mi do mo ya - ngu Dha bi hu za Mu ngu ni ro ho
Na ki nywa cha ngu ki ta zi ne na si fa za ko Mo yo u li o vu nji ka



i li yo vu nji ka
na - ku po nde ka E Mu ngu hu ta u dha ra u