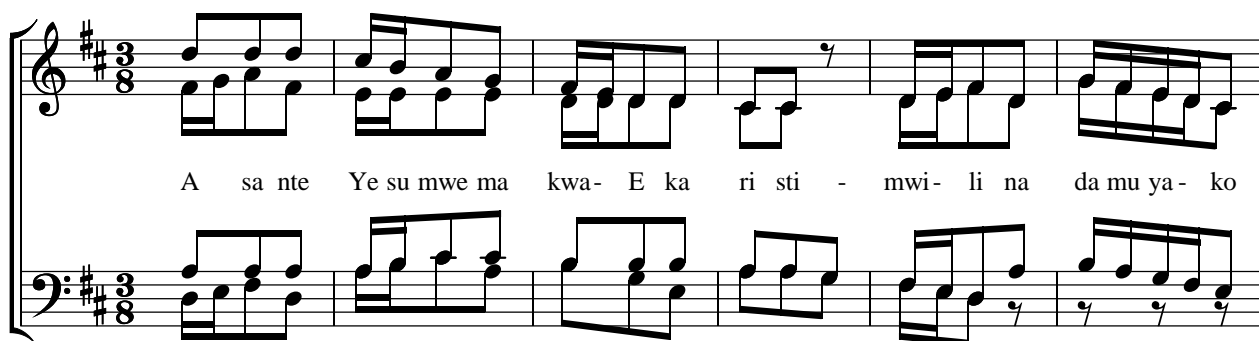


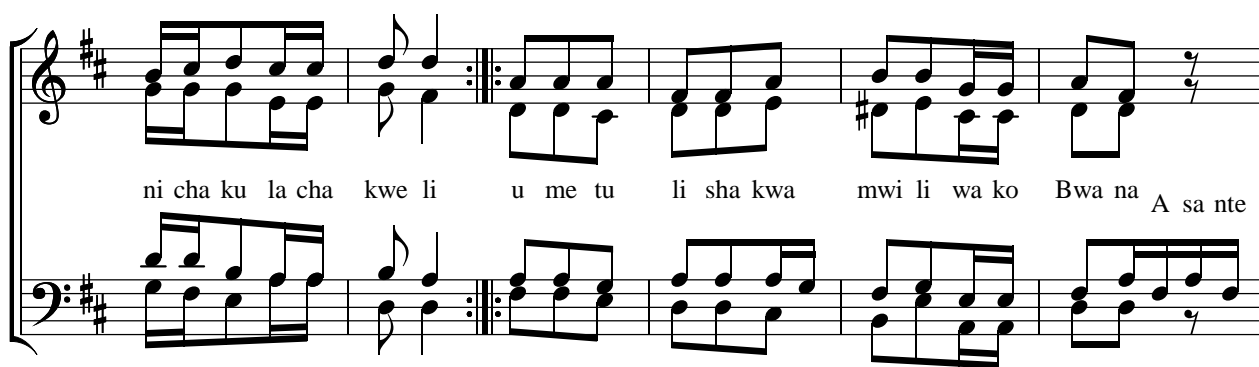
ASANTE YESU MWEMA

Marini Faustini
Cathedral - Morogoro
10- Aug. 2019
0714 545422

Allegro Moderato



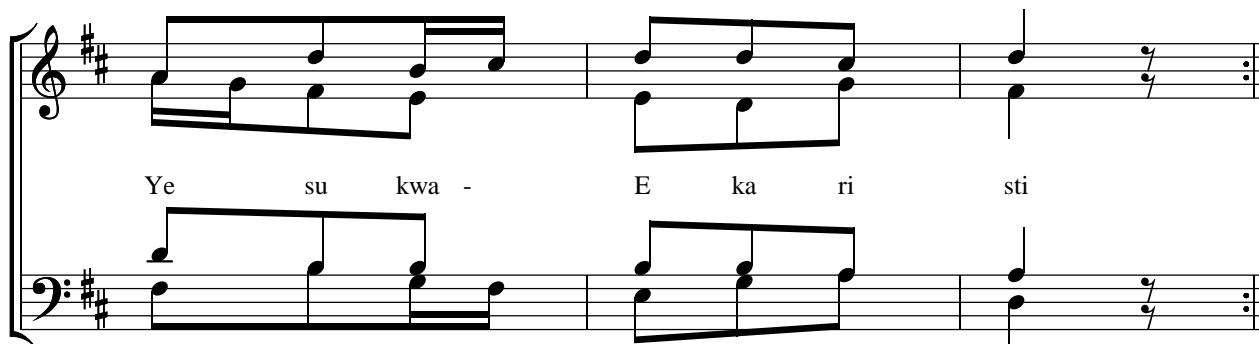
A sa nte Ye su mwe ma kwa- E ka ri sti - mwi- li na da mu ya- ko



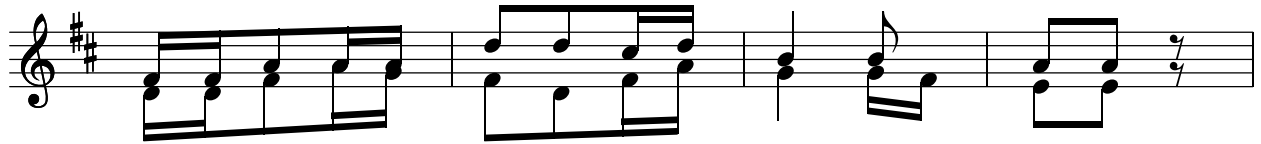
ni cha ku la cha kwe li u me tu li sha kwa mwi li wa ko Bwa na A sa nte



u me tu nywe sha kwa- da mu ya ko A zi zi A sa nte



Ye su kwa - E ka ri sti



1. We we ndi we tu li zo la - na fsi ze - tu
2. U me ku wa Fa ra ja ya mi o yo ye tu
3. U me tu pa A ma ni ma i sha ni - mwe tu



- A - sa nte Bwa na Ye su - tu na shu ku ru
A - sa nte Bwa na Ye su - tu na shu ku ru
A - sa nte Bwa na Ye su tu na shu ku ru