

KINYWA CHANGU KITASIMULIA

ZABUR 71,1,4,6 Mwaka C.


By m,p,makingi

Ikungi Parish

01/02/2013

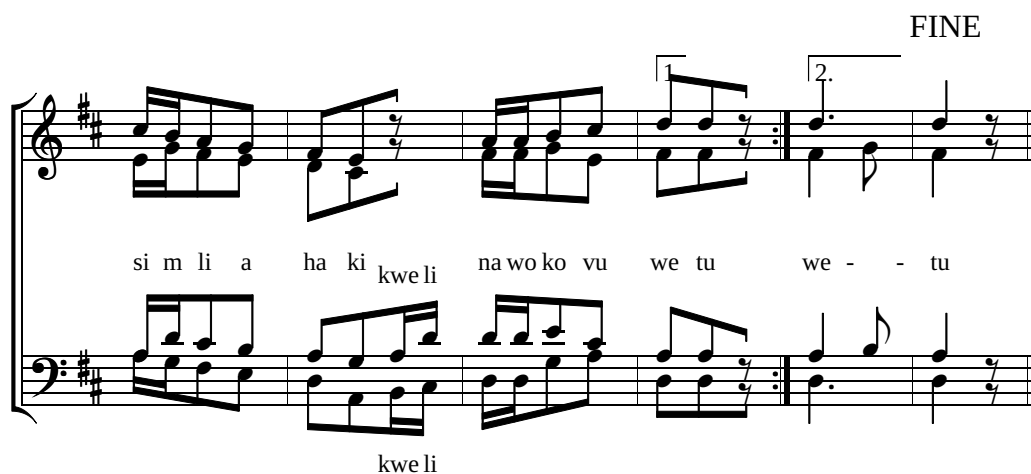
SINGIDA

MODERATO

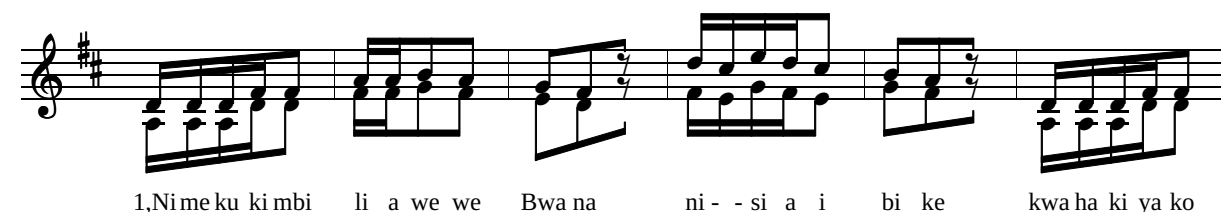


Ki nywa cha ngu ki ta si mu li a ki nywa cha ngu ki ta

FINE



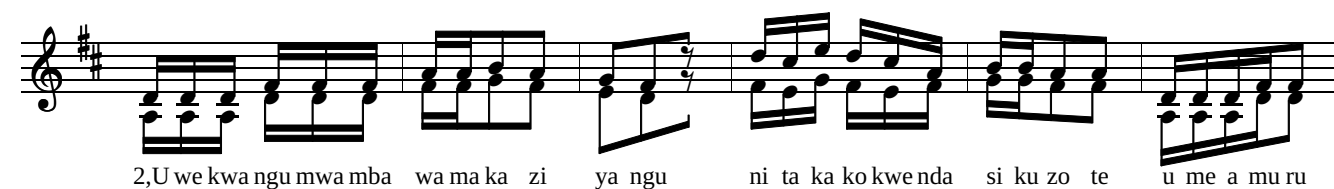
si m li a ha ki kwe li na wo ko vu we tu we - - tu
kwe li



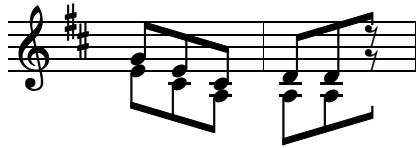
1,Nime ku ki mbi li a we we Bwa na ni - - si a i bi ke kwa ha ki ya ko



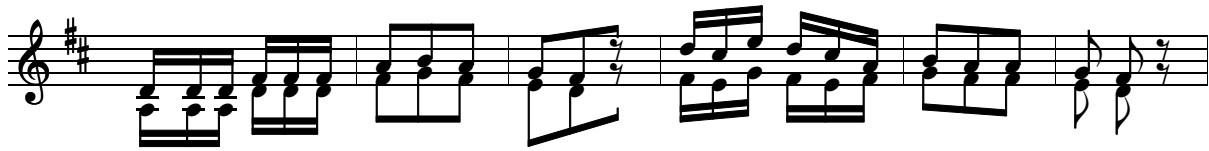
1,u ni po nye u ni o po e u ni te ge e si ki o la ko u ni o ko e.



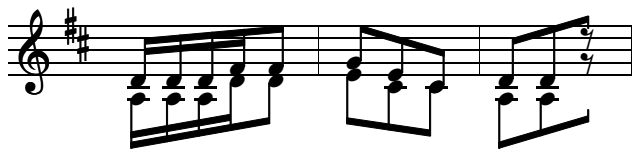
2,U we kwa ngu mwa mba wa ma ka zi ya ngu ni ta ka ko kwe nda si ku zo te u me a mu ru



2,ni o ko le we.



3,Ndi we genge la ngu na ngo me ya ngu Ee we mu ngu wa ngu u ni o po e



3,m ko no ni mwa mwa m ko ro fi.

⋮

⋮

⋮