

# NURU HUWAZUKIA

GOLDEN J. SIMKONDA  
BUTIMBA PRIMARY SCHOOL  
21/1/2020 1318 HRS  
MBOGWE - GEITA

KWA UHAJI NA IBADA

Musical score for the first system of 'Nuru Huwazukia'. It consists of two staves: a treble clef staff and a bass clef staff. The key signature is one flat (B-flat) and the time signature is 3/8. The lyrics are: Nu - ru hu wa zu ki a we nye. The melody is simple and repetitive, with a focus on the words 'Nuru' and 'Huwazukia'. The bass line provides a steady accompaniment.

Nu - ru hu wa zu ki a we nye

Nu - ru hu wa zu ki a we nye

Nu - ru hu wa zu ki a we nye

Soprano & Alto

Musical score for the Soprano & Alto part of 'Nuru Huwazukia'. It consists of a single treble clef staff. The lyrics are: 1. Nu ru hu wa zu ki a we nye a di li gi za ni a na fa dhi. The melody is more melodic and expressive than the piano accompaniment, with some phrasing slurs. The lyrics continue on the next lines: 14 li na hu ru ma na ha ki he ri a te. 18 nda ye ma mbo ya ke kwa ha ki. 21 a te nge ne - za ye ma mbo ya ke kwa ha ki.

1. Nu ru hu wa zu ki a we nye a di li gi za ni a na fa dhi

14 li na hu ru ma na ha ki he ri a te

18 nda ye ma mbo ya ke kwa ha ki

21 a te nge ne - za ye ma mbo ya ke kwa ha ki

Tenor & bass

25. kwa ma a na ha ta o ndo - shwa ka mwe



29 mwe nye ha ki a ta ku mbu kwa mi le le



33 ha ta o go pa ha ba ri mba ya

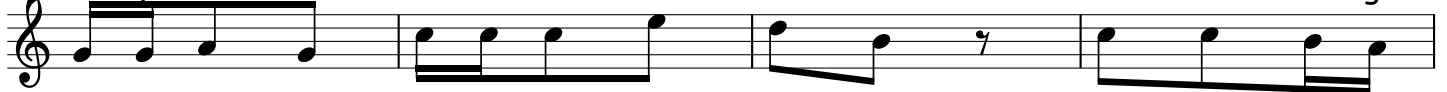


37 mo yo wa ke u i ma ra u ki mtu ma i ni bwa na



Soprano & Alto

41. 3. Mo yo wa ke u me thi bi ti ka ha ta o go



45 pa ha ta a wa o ne wa te si wa ke wa me shi ndwa



50 a me ki ri - mu na ku wa pa ma ski ni ha ki ya ke ya ka a mi



56 le le pe mbe ya ke i ta tu ku zwa kwa u tu ku fu

