

Tukiwakumbuka Marehemu

St.Francis Ksavery
Nyalikungu

By JM Ntugwa
0655-167173
2017-Nyl-Maswa

Moderato

so te ku m shu ku ru mwe nye zi

Njo ni tu u nga ne so te Njo ni wo te tu m shu ku ru Mwe nye zi
ku m shu ku ru Mwe nye zi

so - te tu m shu ku ru Mwe nye zi

Detailed description: This system contains the first four measures of the piece. It features a piano accompaniment with a treble and bass clef, and a vocal line. The key signature has two sharps (F# and C#) and the time signature is 3/8. The tempo is marked 'Moderato'. The lyrics are written above and below the notes.

tu fa nye na ku mbu ki zi

5 nye zi tu ki wa ku mbu ka le - o tu ki wa ku mbu ka Ma re he mu we
tu fa nye na ku mbu ki zi

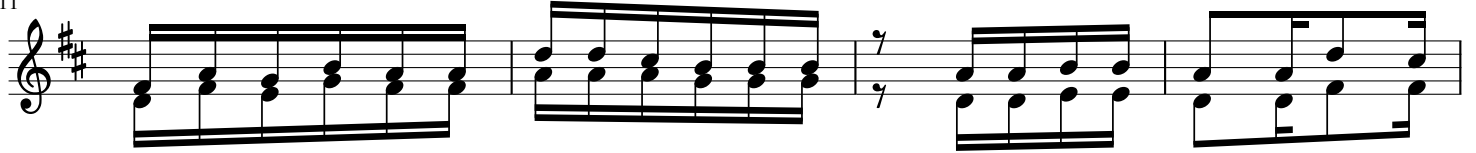
tu fa nye na ku mbu ki zi

Detailed description: This system contains measures 5 through 9. It continues the piano accompaniment and vocal line. The lyrics are written above and below the notes.

10 tu

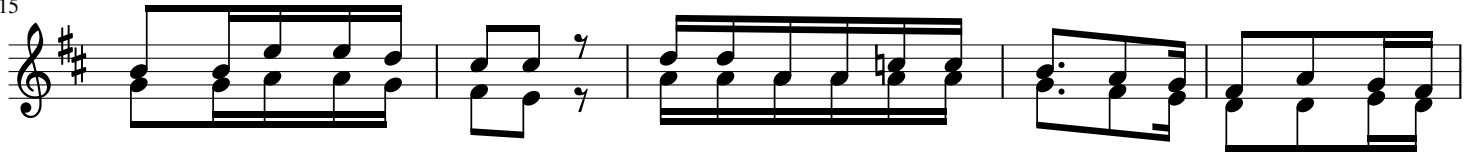
Detailed description: This system contains measures 10 through 12. It shows the final part of the piano accompaniment and vocal line. The lyrics are written above and below the notes.

11



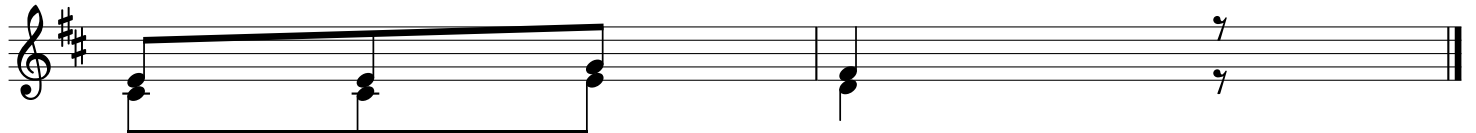
1. Tu li i shi na o ha pa du ni a ni sa sa ha tu ko pa mo ja
 2. Wa li tu le a na ku tu fu ndi - sha ma i sha ya o ya li ku
 3. Ee Mwe nye zi Mu ngu u wa pe Re he ma na u wa po ke e kwe nye
 4. Ha tu na bu di sa sa ku fu ra - hi kwa ni ha wa ndu gu i po

15



na o wa me tu to ka wa sa me he dha mbi za o na u wa po -
 wa m fa - no kwe tu wa me ta ngu li a kwa ko na si oi te tu
 mwa nga mwa - nga wa ko tu li o sa li a na si tu ji a nda e
 si ku tu ta o na na mbi ngu ni kwa Mu ngu Ba ba tu ta i mbanyi

20



ke e kwa ko
 ta re je a
 na sa fa ri
 mbo za si fa