

# KISIMA CHA WOKOVU

ISAAYA 12: 2 - 6 (K)

M.S. Maduka  
Mafinga Iringa

Soprano/Alto

Tenor/Bass

Kwa fu ra - ha kwa fu ra ha kwa fu ra - ha kwa fu ra

Detailed description: This system shows the first four measures of the vocal piece. The Soprano/Alto part is written on a treble clef staff with a key signature of one sharp (F#) and a 3/8 time signature. The Tenor/Bass part is on a bass clef staff. The lyrics are: 'Kwa fu ra - ha kwa fu ra ha kwa fu ra - ha kwa fu ra'. The music features a mix of eighth and sixteenth notes with rests.

S./A.

T./B.

ha - na sha - ngwe m ta te ka ma - ji - ka ti ka vi si - ma M ta


Detailed description: This system covers measures 5 to 8. The Soprano/Alto part continues with the lyrics: 'ha - na sha - ngwe m ta te ka ma - ji - ka ti ka vi si - ma M ta'. The Tenor/Bass part provides harmonic support with chords and moving lines. The notation includes various note values and rests.

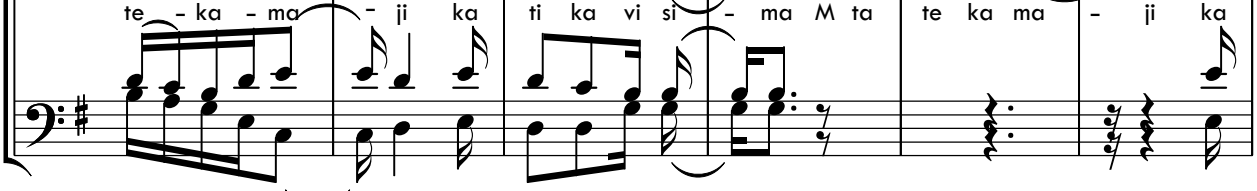
S./A.


T./B.

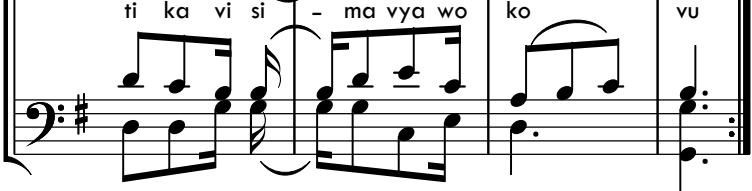
te ka ma - ji ka ti ka vi si - ma M ta

Detailed description: This system covers measures 9 to 12. The Soprano/Alto part continues with the lyrics: 'te ka ma - ji ka ti ka vi si - ma M ta'. The Tenor/Bass part continues with harmonic accompaniment. The system concludes with a final cadence.

S./A.  te - ka - ma - ji ka ti ka vi si - ma M ta te ka ma - ji ka

T./B. 

S./A.  ti ka vi si - ma vya wo ko vu

T./B. 

**ORGAN**

**Mashairi:** 

T./B. 

1. Ha mu ya ngu na tu ma i ni la ngu ni kwa - ko Mu ngu wa ngu ni ya vu
2. Te ge me o la mo yo wa ngu ni ku - fi - ka kwe nye ki si ma ki si
3. Na u ki mbi li a u li nzi wa ko e Mu - ngu kwe nye ki si ma ki si

T./B.  **ORGAN**

1. ne ma ji ya u zi ma u zi ma wa mi le le yo te
2. ma ki le cha wo ko vu wo ko vu wa ma i sha ya ngu
3. ma ki le cha wo ko vu wo ko vu wa mi le le yo te

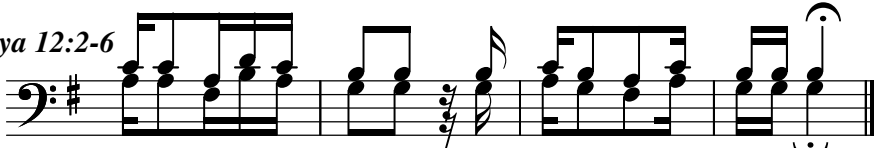
**Isaya 12:2-6** 

T./B. 

1. Ta za ma Mu ngu ndi ye - wo ko vu wa ——— ngu ni ta tu ma i ni wa
2. Ka ti ka si ku hi yo m ta se ma m shu - ku ru ni Bwa na Mu ngu ma
3. Ya ju li ka ne ha ya - du ni a yo ——— te pa - ze ni sa u ti

*Isaya 12:2-6*

T./B.



**ORGAN**

1. la si ta - o go pa wa la si ta o go - pa
2. a na a me tu ku ka a me tu ku ka sa - na
3. Sa yu ni pi ga kele le Ee Sa yu nipi ga ke le le