

BWANA YU KARIBU NA WOTE

ZAB.145;2-3.8-9.17-1.8 .MWAKA .A

By m.p.makingi

Ikungi Parish

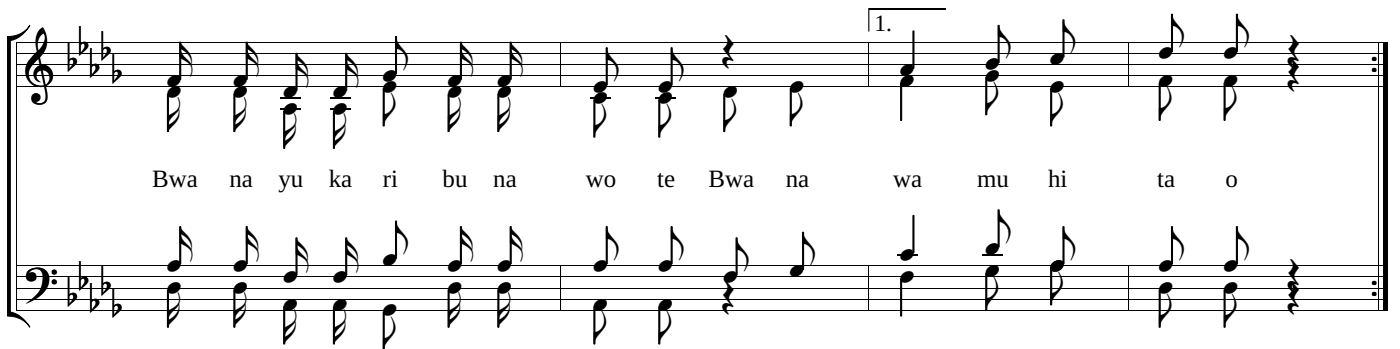
13-04-2020

SINGIDA

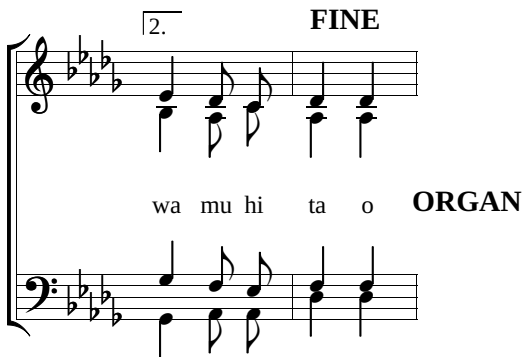
Brio



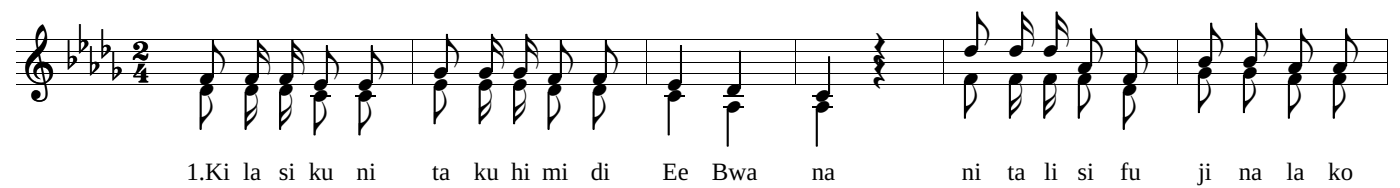
Bwa na yu ka ri bu na wo te wa tu wo te wa mu hi ta o kwe li



Bwa na yu ka ri bu na wo te Bwa na wa mu hi ta o



wa mu hi ta o **ORGAN**



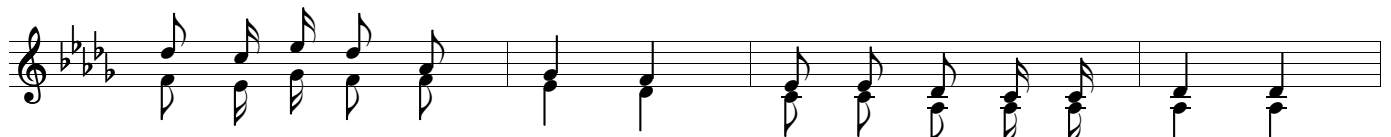
1.Ki la si ku ni ta ku hi mi di Ee Bwa na ni ta li si fu ji na la ko



mi le le na mi le



2.Bwa na ndi ye m ku u mwe nye ku si fi wa sa na



2.wa la u ku u wa ke ha u ta mbu li ka ni.



3.Bwa na a na fa dhi li ni mwi ngi wa hu ru ma si mwe pe si wa ha si ra



3.ni mwi ngi wa re he ma



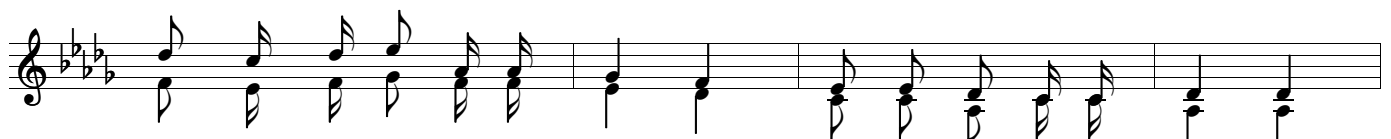
4.Bwa na ni mwe ma kwa wa tu wo te na re he ma za ke



4.zi ju u ya ka zi za ke zo te



5.Bwa na ni mwe nye ha ki ka ti ka ji a za ke zo te



5.na mwe nye fa dhi li ju u ya ka zi za ke zo te.