

ENYI WATU WA GALILAYA

J.M.NTUGWA
ST.FRANSISCO XAVERY
NYALIKUNGU,MASWA
16.05.2020

Mwanzo Kupaa Bwana Mdo,9:11

♩ = 35
Moderato

mbona

E nyi wa tu wa Ga li la ya mbo na m me si ma ma m ki ta zama

la - ya

m me si mama m ki ta za

Detailed description: This system contains the first six measures of the piece. It is written in 3/8 time with a key signature of one sharp (F#). The melody is in the treble clef, and the accompaniment is in the bass clef. The lyrics are: 'E nyi wa tu wa Ga li la ya mbo na m me si ma ma m ki ta zama'.

7

m mbi ngu ni , A ta ku ja vi vyo hi vyo m _ li vyo mwo na a ki e nda

m

A ki

mambi ngu ni

A ki

Detailed description: This system contains measures 7 through 12. The melody continues in the treble clef. The lyrics are: 'm mbi ngu ni , A ta ku ja vi vyo hi vyo m _ li vyo mwo na a ki e nda'. There is a fermata over the word 'm' in the fifth measure.

13

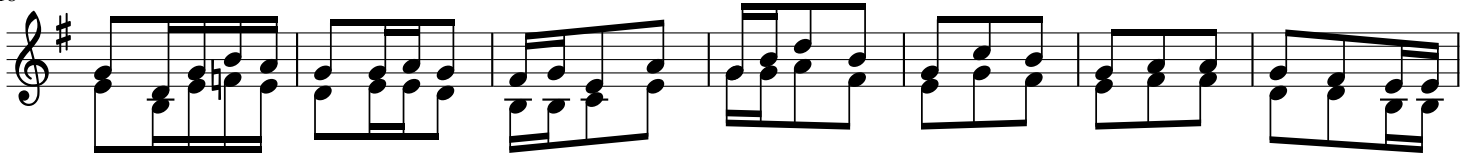
e - nda

a ki e nda e nda za _ ke mbi ngu ni a le lu ya . E nyi lu ya . 1.A ki-

1. 2.

Detailed description: This system contains measures 13 through 18. The melody continues in the treble clef. The lyrics are: 'e - nda a ki e nda e nda za _ ke mbi ngu ni a le lu ya . E nyi lu ya . 1.A ki-'. The system ends with a double bar line and a repeat sign, with two endings labeled '1.' and '2.'.

18



i sha kuse _ ma hayo wa li po ku wa wa _ ki ta za ma a ka i nu li wa a ka

25



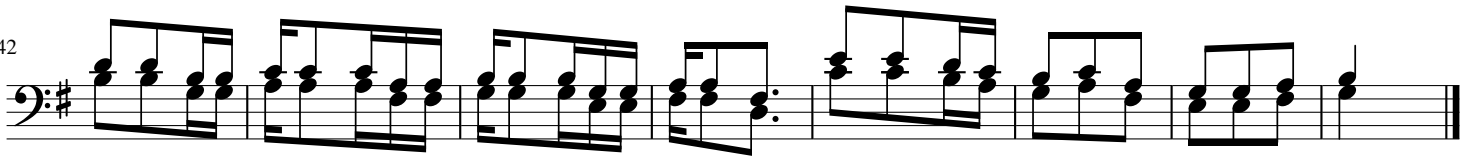
i nu li wa , Wi ngu li ka m po ke a ku to ka ma cho ni pa o.

33



2. Wali po kuwawakata za ma machombinguni , ye ye a li po kuwa aki e nda za ke ta

42



za ma watuwa wi li wa li sima makari bu na o we nyengu o nye u pe wa ki se ma.;