

Njoo ni Tuwashuhudie

(Kwa kumbukumbu maalum)

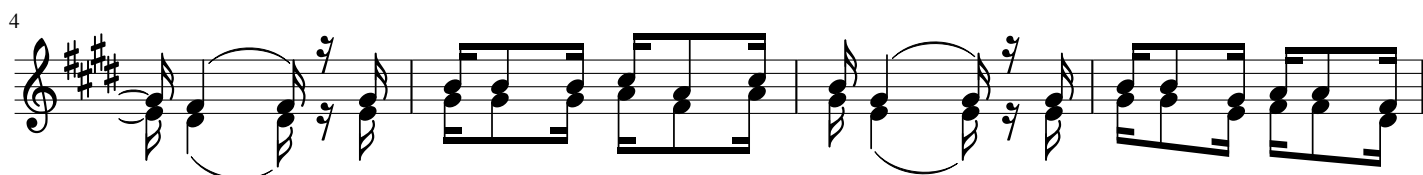
Bernard Mukasa

13.08.1999

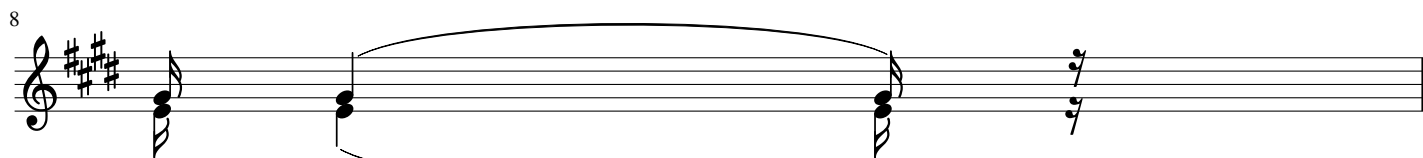
♩ = 70



1.Mi ko no ni wa me shi ka na - o na wa na a nda ma -
2.Ta ngu wa li po vu ti a na - ni a wa li we ke a -
3.Sa fa ri nde fu te na ngu mu - le o ya i shi a hu -
4.Si si tu ta wa shu hu di a - wa o wa a hi di a -
5.Che re ko nde re mo vi fi jo - vi to ke nda ni ya mo -



- na - pe ndo ku ha ki ki shi a na - he ka lu ni wa na i
- na - si ku mo ja wa je u nga na - le o wa na ti mi zi
- mu - wa na va li shwa ma ju ku mu - ku u nda ki za zi ti
- na - mwe nye zi a ta u nga ni sha - ndo a ya o ku ka mi
- yo - mwe nye zi a tu ku zwe hu mo - da i ma mi le le mi



ngi a
a na
ma mu
li ka
le le

9

Njo o ni njo o ni njo o ni njo o ni wa kekwa wa u me njo

14

o ni tu wa shu hu di e - wa pendwa wa na vyo u nga na - njo

1.

Detailed description: This block contains the musical notation for measures 14 through 17. It is written for piano in a key with three sharps (F#, C#, G#) and a 4/4 time signature. The melody is primarily in the right hand, with accompaniment in the left hand. Measure 14 starts with a treble clef and a key signature of three sharps. The lyrics are: "o ni tu wa shu hu di e - wa pendwa wa na vyo u nga na - njo". A first ending bracket labeled "1." spans measures 16 and 17, which end with repeat signs.

18

nga na

2.

Detailed description: This block contains the musical notation for measures 18 and 19. It continues from the previous block with the same key signature and time signature. The lyrics are: "nga na". A second ending bracket labeled "2." spans measures 18 and 19, which end with repeat signs.