

YESU WIHUKA:-Acc BY CHRIBENKO

TRADITIONAL

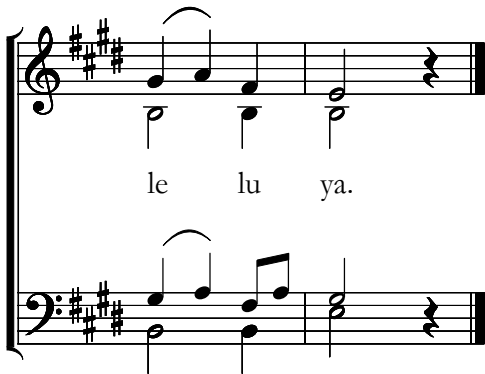
1. Ba Kri sto le lo tu ye ge, tu to gwe na Mo
I ki Ye su mpi ja ye wi swe, a

yo go se ka hi mbu ka Ale lu ya

Chorus

Ye su Wi hu ka Wi hu ka u ti nda lu fu u la

ma, wi hi mbu cha A le lu ya A le lu ya A



2. Banishi bali bishima, giki bakantinda Yesu.// Gashi ali akahembuka buobona bo batindilwe.
3. Yesu akahaya kale, giki atalikala mumbi//giki alabi kiti Yona lwa kadatu alingamo.
4. Maria niniswe mfula, nang'ho twakwihucha lelo//Wihuka no na ng'wanoko, ukatogwano kumona.
5. Yesu Seb' ukihimbucha, ikuli nyanhalemelwa//Niswe twisagila giki, ulatuhimbucha chene.
6. Kwike utuhembuche lulu, uhimbuche Myoyo yise//Yikale mipanga ng'hana, italizushoka kucha.

*Himbo Lyandekagwa na nene; Mika Wihuba 0764 172963
Lushiku lo 17 ng'weji go katandatu (06), 2020-Hikelezia lya Buza-Ng'hwani DSM*