

JIHADHARINI NA MANABII WA UONGO

Na; D. Mapato
(Mwana wa Mapato)
Kasamwa - Geita
0621589250

Allegro

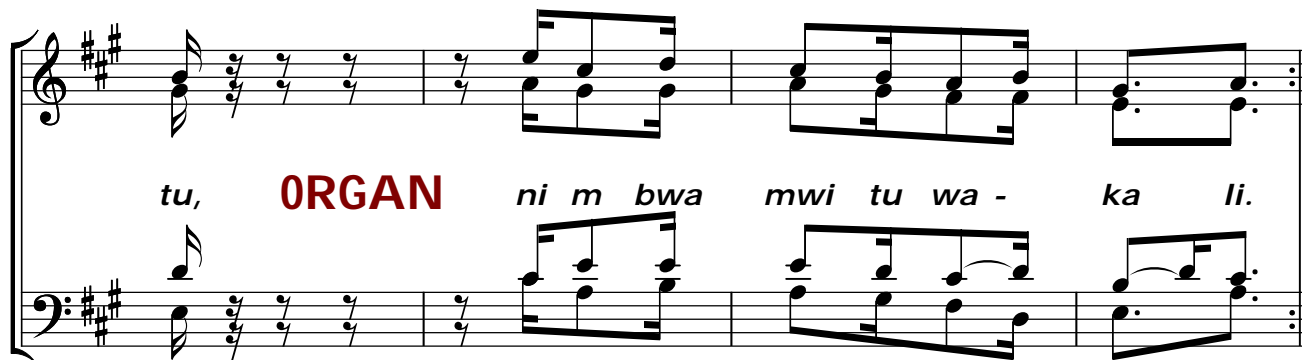
ji ha dha ri ni na ma na bi i ji ha dha ri ni na ma na bi i wa u o ngo

Organ

wa - tu wa na o wa - ji a

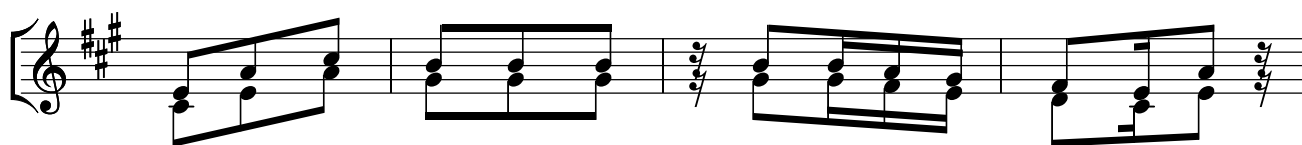
wa me va a ma va zi ya ko ndo o,

*wa la ki ni kwa nda ninda- ni ni m bwa mwi tu **ORGAN** ni m bwa mwi*

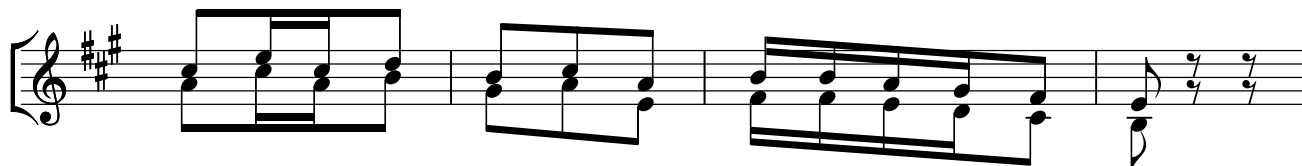


tu, **ORGAN** ni m bwa mwi tu wa - ka li.

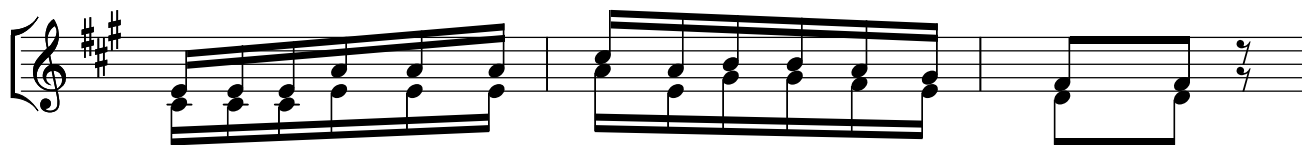
Maimbilizi



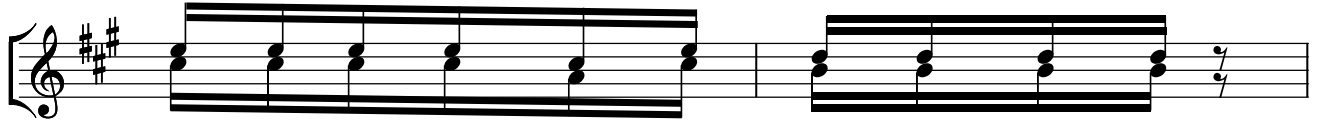
1. M ta wa ta mbu a, kwa ma tu nda ya o je?
2. M - - - ti mwe ma, m ti m ti mwe ma ha
3. Si - ki la m tu, a - ni a mbi a ye
4. We ngi wata nia mbi a, si ku i le Bwa - na



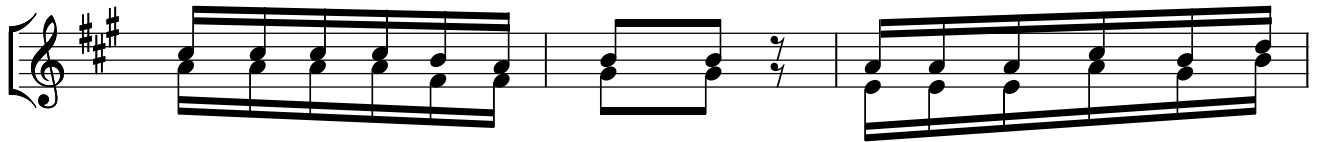
wa tu hu chu ma dha bi bu ka ti ka mii ba,
 u we zi ku za a ma tu - nda ma ba ya,
 Bwa - na Bwa na Bwa na Bwa - - na Bwa na,
 Bwa - na Bwa na ha tu ku fa nya u nabi i,



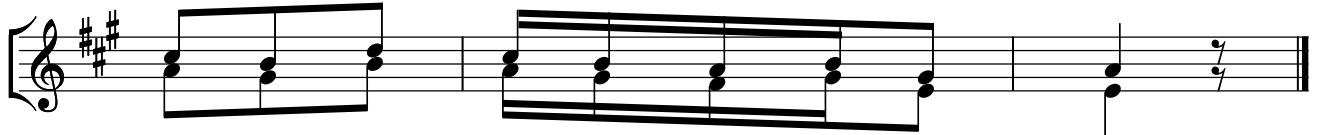
A - u ti - ni ka ti ka - mi ba ru ti,
 wa la m ti mwo vu ku za a ma tu nda mazu ri,
 a - ta i ngi a ka ti ka u fa lme wambi ngu,
 u - na bi - i kwa - ji - na - la ko,



vi vyo hi vyo ki la m ti mwe ma
vi vyo hi vyo ki la m - ti -
Ba - li ni yeye a fa nya - ye -
ndi po ni ta waa mbi a dha hi ri



hu za a ma tu nda me ma, na m ti mwo vu hu
usio za a ma tu nda mazu ri, hu ka twa u ka -
ma pe nzi ya Ba ba ya ngu, Ba ba ya - ngu a
si wa ju i ni nyi ka mwe, o ndo ke ni kwa ngu



za a ma - tu nda ma ba ya.
tu pwa u ka tu pwa mo to ni.

li - ye a li ye mbi - nguni.
ni - nyi m te nda o ma - o vu.

Copied by; Paul San. Mziba

+255 -763661720