

# JAPO NI KIDOGO

By M.S.MADUKA  
Mafinga -IRINGA

**Allegro**

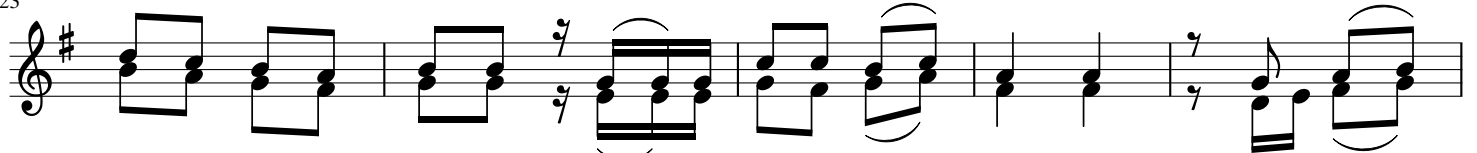
Musical score for the first system, measures 1-6. The score is in 2/4 time with a key signature of one sharp (F#). The melody is written in the treble clef and the accompaniment in the bass clef. The lyrics are: Ta zamatwa si ma matu na ku ja kwa ko MunguBa ba ku ku to le a Bwa na sa

Musical score for the second system, measures 7-12. The score includes a first ending (1.) and a second ending (2.). The lyrics are: da ka ze tu tu Ja po ni ki do go Bwa na ja po ni ki

Musical score for the third system, measures 13-18. The lyrics are: do go Bwa na ja po ni ki do go Bwa na ja po ni ki do go Bwa na ja - po ni ki

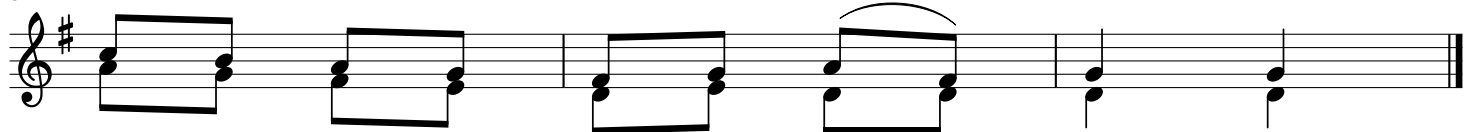
Musical score for the fourth system, measures 19-24. The score includes a first ending (1.) and a second ending (2.). The lyrics are: do go Bwa na po ke a Ja a

23



1.Ni wa ji bu we tu ku ku to le a sa - da ka Mu - ngu  
 2.Me ma u te nda yo kwe - tu si si wa na da mu ni me ngi  
 3.Twa ku o mba Bwa na u e nde le e ku tu li nda tu ku fi

28



mwe - nye zi Mu ngu Ba ba ye tu  
 sa na ha tu na cha ku ku li pa  
 ki e hu ko ju u mbi - ngu ni