

BWANA YESU AMEKUCHAGUA

Amos A.M. Kasela

Katubuka

April 2019

0762175216

Moderato

Bwa na Ye su a me ku cha gu a u ka hu bi ri ha

ku cha gu a

This system contains the first two lines of the hymn. The music is in 3/8 time with a key signature of two sharps (F# and C#). The melody is written in the treble clef, and the accompaniment is in the bass clef. The lyrics are: 'Bwa na Ye su a me ku cha gu a u ka hu bi ri ha' on the first line, and 'ku cha gu a' on the second line.

ba ri nje ma ne nda u me tu mwa ne nda u me tu mwa

This system contains the third and fourth lines of the hymn. The music continues with the same melody and accompaniment. The lyrics are: 'ba ri nje ma ne nda u me tu mwa ne nda u me tu mwa'.

u ka wa hu bi ri e ma ta i fa yo te ne nda u me

This system contains the fifth and sixth lines of the hymn. The music continues with the same melody and accompaniment. The lyrics are: 'u ka wa hu bi ri e ma ta i fa yo te ne nda u me'.

tu mwa kwa ma ta i fa yo te yo te.

This system contains the seventh and eighth lines of the hymn. The music continues with the same melody and accompaniment. The lyrics are: 'tu mwa kwa ma ta i fa yo te yo te.' The system concludes with a first ending (marked '1.') and a second ending (marked '2.').



1.Mwe - nye zi Mu ngu a me ku cha gu a u ka hu bi ri -  
 3.U we mwa mi ni fu kwa ke Bwa na Ye su u ka hu bi ri -



1.I nji li - ya ke u ka hu bi ri kwa ma ta i fa yo te u si o  
 3.ha ba ri - nje ma u ka hu bi ri kwa ma ta i fa yo te u si o



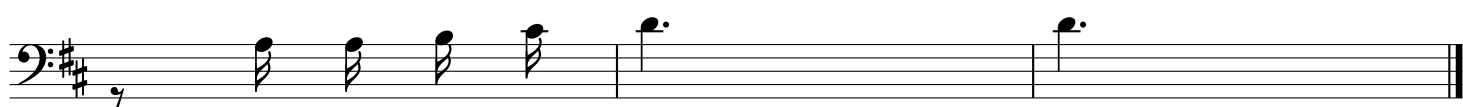
1.go pe ne nda ne nda ne nda u ka hu bi ri.  
 3.go pe ne nda ne nda ne nda u ka hu bi ri.



2.Ye su a na ku tu - ma ne nda u ka hu bi ri - i nji li ya ke



2.a a mi ni ye na ku ba ti zwa a ta o ko ka a si ye a mi ni



a ta hu ku mi wa