

# RAHA YA MILELE

UMPE EE BWANA

Na: Baraka John

#B.The Best

Matosa DSM

2020

Andante

♩ = 100

Musical notation for the first system, measures 1-4. The key signature is one sharp (F#) and the time signature is 3/8. The melody is in the treble clef, and the accompaniment is in the bass clef. The lyrics are: Ra ha ya mi le le u.

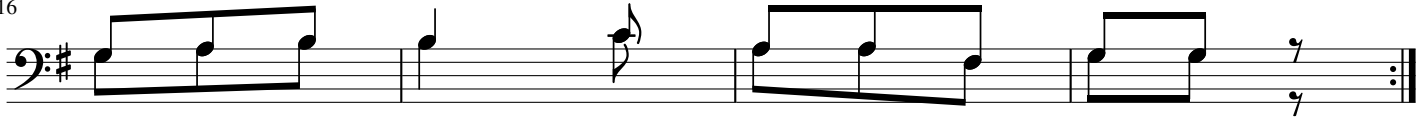
Musical notation for the second system, measures 5-8. The key signature is one sharp (F#) and the time signature is 3/8. The melody is in the treble clef, and the accompaniment is in the bass clef. The lyrics are: m pe ee Bwa na na mwa nga wa mi le le u mu.

Musical notation for the third system, measures 9-12. The key signature is one sharp (F#) and the time signature is 3/8. The melody is in the treble clef, and the accompaniment is in the bass clef. The lyrics are: a nga zi e a pum zi ke kwa a.

Musical notation for the fourth system, measures 13-16. The key signature is one sharp (F#) and the time signature is 3/8. The melody is in the treble clef, and the accompaniment is in the bass clef. The lyrics are: ma ni. Ra ni. The system includes a first ending (1.) and a second ending (2.).

16

1.



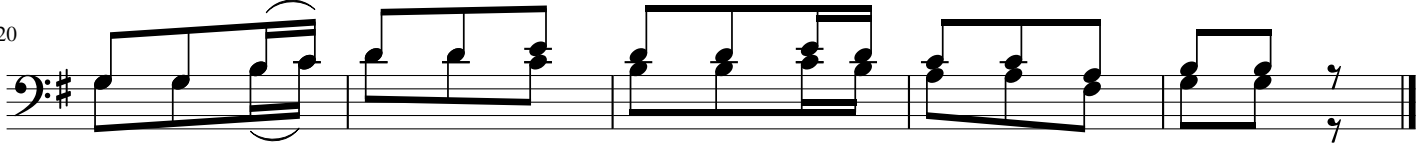
1. a) U li ku wa na si si pa mo ja  
 b) U li i shi na si si pa mo ja

2. a) U li sa li na si si pa mo ja  
 b) U li i mba na si si pa mo ja

3 a) U li se ma na si si pa mo ja  
 b) U li che za na si si pa mo ja

20

2.



mo ja la ki ni Mu ngu a me ku pe nda za i di.