

# TUMESISIMUKA - TUMEANDAMANA

By Alfred Ossonga

♩ = 108

Tu-me-si-si - m-ka - tu-me-ku-ja - kwa-ko-ee-Ba-ba - tu- me-a-nda - ma-na - tu-na-le-ta

Tu-me-si-si - m-ka - tu-me-ku-ja - kwa-ko-ee-Ba-ba - tu- me-a-nda - ma-na - tu-na-le-ta

8 Tu-me-si-si - m-ka-kwe-li - ku-ja - kwa-ko-ee-Ba-ba - tu- me-a-nda - ma-na-so-te - le-ta

Tu-me-si-si - m-ka-kwe-li - ku-ja - kwa-ko-ee-Ba-ba - tu- me-a-nda - ma-na-so-te - le-ta

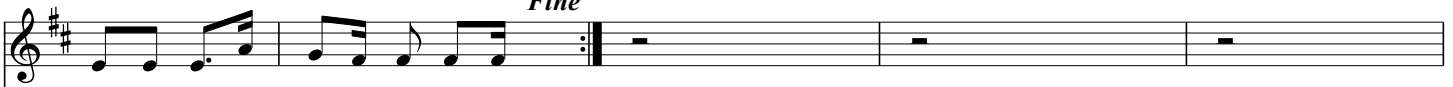
- za-wa-di-ze-tu - wa-u-mi-ni - wo-te - si-ma-me-ni - twe-nde-pa-mo-ja - tu-pe-le-ke - fe -dha

- za-wa-di-ze-tu - wa-u-mi-ni - wo-te - si-ma-me-ni - twe-nde-pa-mo-ja - tu-pe-le-ke - fe -dha

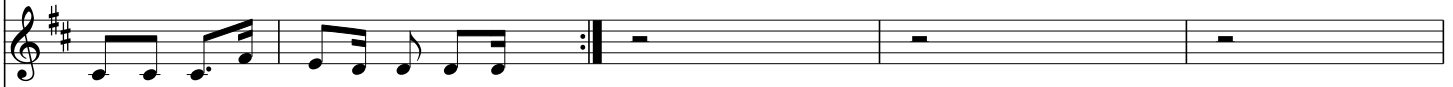
8 - za-wa-di-ze-tu - wa-u-mi-ni - wo-te-kwe-li - me-ni - twe-nde-pa-mo-ja - tu-pe-le-ke - fe -dha-ze-tu

- za-wa-di-ze-tu - wa-u-mi-ni - wo-te-kwe-li - me-ni - twe-nde-pa-mo-ja - tu-pe-le-ke - fe -dha-ze-tu

*Fine*



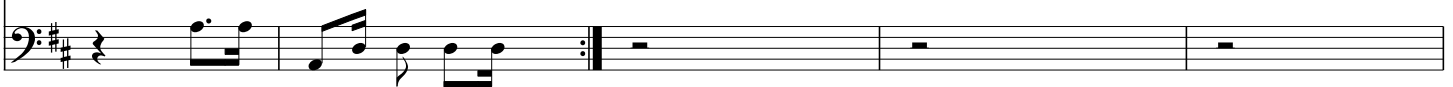
- ma - vu - no - na - mi - fu - go - ye - tu.



- ma - vu - no - na - mi - fu - go - ye - tu.

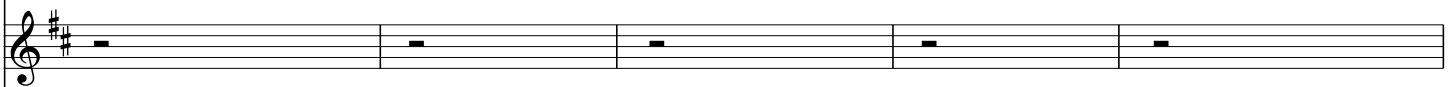
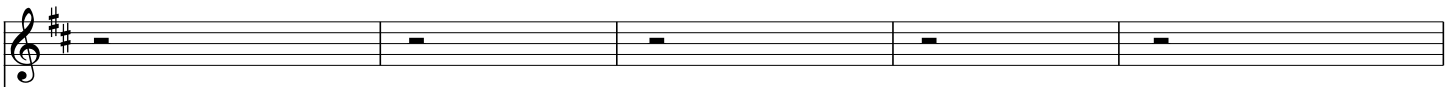


-	no - na - mi - fu - go - ye - tu.	-	1. O - ndo - ke - ni - ba - ba - na - ma - ma	-	o - ndo - ke - ni -
-	- - - - -	-	2. Hi - ma - hi - ma - twe - nde - pa - mo - ja	-	hi - ma - hi - ma -
-	- - - - -	-	3. Fe - dha - za - mi - fu - ko - ni - mwe - tu	-	tu - pe - le - ke -
-	- - - - -	-	4. Ma - vu - no - tu - li - yo - ja - li - wa	-	ku - to - ka - na -
-	- - - - -	-	5. M - ka - te - ma - za - o - ya - nga - no	-	di - va - i - tu -

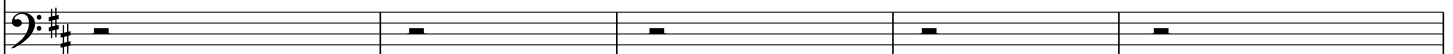


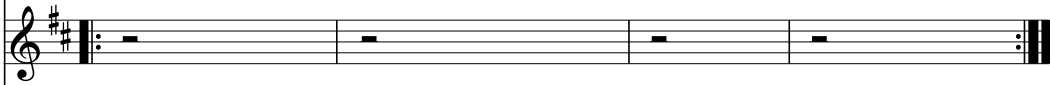
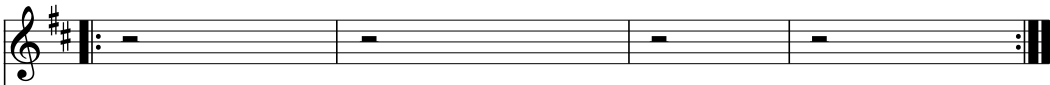
- no - na - mi - fu - go - ye - tu -

- - - - -  
 - - - - -  
 - - - - -  
 - - - - -



-	na - nyi - wa - to - to	-	chu - ku - e - ni - fe - dha - na - ma - li	-	tu - pe - le - ke - mbe - le - za - Bwa - na -
-	twe - nde - kwa - Bwa - na	-	tu - pe - le - ke - fu - ra - ha - ze - tu	-	tu - pe - le - ke - u - chu - ngu - we - tu -
-	kwa - u - ka - ri - mu	-	ni - ma - pa - to - ya - ngu - vu - ze - tu	-	tu - pe - le - ke - ka - ma - za - wa - di -
-	na - ja - sho - le - tu -	-	mi - fu - go - tu - na - o - wa - fu - ga	-	tu - pe - le - ke - ka - ma - sa - da - ka -
-	nda - la - za - bi - bu	-	a - ge - u - ze - mwi - li - na - da - mu	-	tu - ta - ku - la - na - tu - ta - ku - nywa -





8  
- Tu - we - ke - a - ki - ba - mbi - ngu - ni - na - si - tu - ta - ba - ri - ki - wa.  
- Si - ma - me - ni - twe - nde - kwa - Bwa - na - tu - pe - le - ke - nyo - yo - ze - tu.  
- Twe - nde - kwa - ke - tu - m - shu - ku - ru - so - te - tu - pa - te - ba - ra - ka.  
Tu - ta - fa - ni - ki - wa - za - i - di - Bwa - na - a - ta - tu - ba - ri - ki.  
Tu - ta - pa - ta - ngu - vu - za - mbi - ngu - na - u - zi - ma - wa - mi - le - le.



- Tu - we - ke - a - ki - ba - mbi - ngu - ni - na - si - tu - ta - ba - ri - ki - wa.  
Si - ma - me - ni - twe - nde - kwa - Bwa - na - tu - pe - le - ke - nyo - yo - ze - tu.  
Twe - nde - kwa - ke - tu - m - shu - ku - ru - so - te - tu - pa - te - ba - ra - ka.  
Tu - ta - fa - ni - ki - wa - za - i - di - Bwa - na - a - ta - tu - ba - ri - ki.  
Tu - ta - pa - ta - ngu - vu - za - mbi - ngu - na - u - zi - ma - wa - mi - le - le.