

# MAMA MARIA

Sitta Af  
15/5/2020  
Mwadui

$\text{♩} = 65$

Ma ma Ma ri a Ma ma mwe ma u tu ombe e wa na o

Ma ma ye tumwe ma Ma ri a

6

twa kuli li a Ma ma u tu ombe e Ma ma si si wa na o wa dha mbi

12

Ma ma ee

si si tu me te nda dha mbi Ma ma u tu o mbe e.

ee Ma ma

17

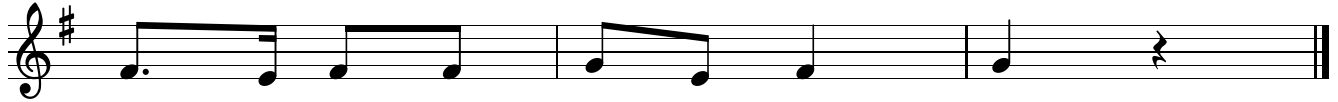
1. We we ndi we m fa ri ji wa we nye u chu ngu  
2. U me ba ri ki wa Ma ma na Mu ngu Mwe nye zi  
3. Ni ha ki ka tu ta shi nda hi la za she ta ni

21



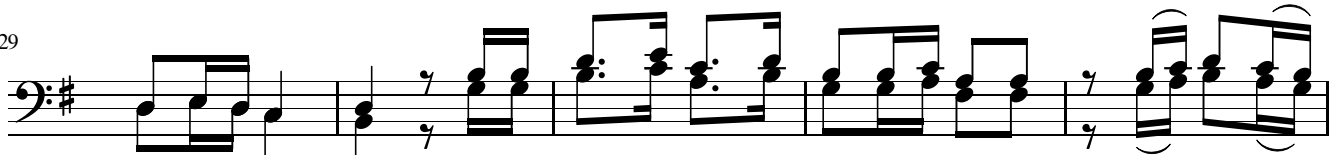
1. u tu o mbe e Ma ma wa na o wa ko se fu i li I ma ni  
 2. we we ni Ma ma ya ke mwa na pe kee wa Mu ngu u tu o mbe e  
 3. kwa ma o mbe zi ya ko tu si ma mi e Ma ma i li na si tu

26



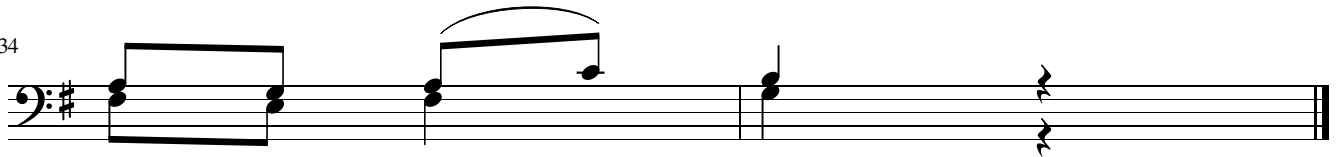
1. ye tu i zi di ku ku wa.  
 2. Ma ma si si wa na wa ko  
 3. fi ke kwa ke Mu ngu Ba ba.

29



.4. Ma ma Ma ri a twa shu ku rukwa ma o mbe zi ya ko a - sa nte -

34



twa shu ku ru.