

# TUPELEKE VIPAJI

Elia Temihanga Makendi

Ismani Parish

13 May 2020

♩ = 63

S  
A

T  
B

Tu pe le ke Ee tu pe le ke tu pe le ke vi pa ji tu pe le ke Ee

Detailed description: This block contains the first five measures of the song. It features a Soprano (S) and Alto (A) vocal line in the treble clef and a Tenor (T) and Bass (B) vocal line in the bass clef. The music is in 6/16 time with a key signature of one sharp (F#). The lyrics are: 'Tu pe le ke Ee tu pe le ke tu pe le ke vi pa ji tu pe le ke Ee'.

6

tu pe le ke tu pe le ke vi pa ji m ka te na di va i twende ni tu m to le e

Detailed description: This block contains measures 6 through 11. The vocal lines continue with the lyrics: 'tu pe le ke tu pe le ke vi pa ji m ka te na di va i twende ni tu m to le e'. The piano accompaniment consists of chords and moving lines in both hands.

12

Bwa na na yo ma za o ya ma shamba ni twe nde ni tu mto le e tu pe le ke Ee

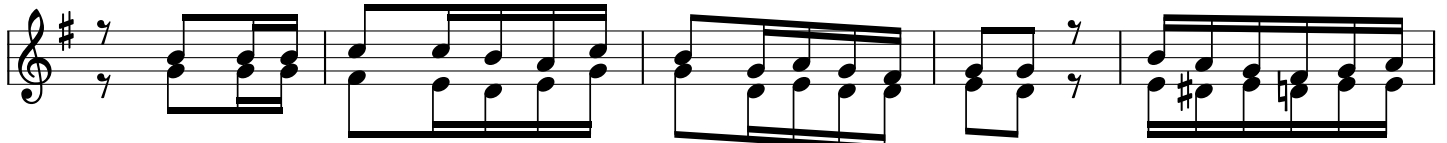
Detailed description: This block contains measures 12 through 17. The lyrics are: 'Bwa na na yo ma za o ya ma shamba ni twe nde ni tu mto le e tu pe le ke Ee'. The piano accompaniment features a steady rhythmic pattern.

18

tu pe le ke tu pe le ke vi pa ji

Detailed description: This block contains the final four measures (18-22) of the song. The lyrics are: 'tu pe le ke tu pe le ke vi pa ji'. The piece concludes with a final chord and a fermata over the last note.

21



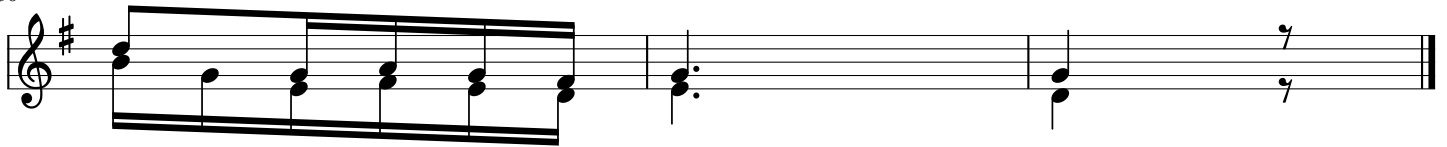
1. Na na fsi ze tu twe nde tu m to le e Mwe nye zi na ye a ta tu ba  
 2. Na yo ma o mbi twe nde tu m to le e Mwe nye zi shi da ze tu tu pe  
 3. Pi a na sa la ze tu twe nde tu ka m to le e ni a na - du a

26



ri ki tu ki m to le a kwa u cha ji na si tu ta ta ka  
 le ke kwa i ma ni na ma tu ma i ni Bwa na a ta zi si  
 ze tu tu pe le ke mbe le za ke Bwa na tu to e kwa mo yo

30



swa kwa sa da ka ye tu.  
 ki li za shi da ze tu.  
 mo yo wa shu ku ra ni.