

# MTAFUTENI BWANA

Isaya 55:6-10

M. Isaya

Apassionato

M ta fu te ni Bwa na ma a da mu a na pa ti ka na Mwi te ni mwi

mwi te ni

Mwi

Mwi

Detailed description: This system contains the first five measures of the piece. It features a piano accompaniment with a treble and bass clef. The melody is in the treble clef, and the lyrics are written below the notes. The key signature has two sharps (F# and C#), and the time signature is 2/4. The lyrics are: 'M ta fu te ni Bwa na ma a da mu a na pa ti ka na Mwi te ni mwi'. There are two 'Mwi' markings above the notes in the fifth measure.

te ni Maa da mu yu ka ri bu ri bu m tu m ba ya na a a che nji a

Bwa na

1. 2.

Detailed description: This system contains measures 6 through 11. It includes a first ending (1.) and a second ending (2.). The lyrics are: 'te ni Maa da mu yu ka ri bu ri bu m tu m ba ya na a a che nji a'. The word 'Bwa na' is written below the first measure. The first ending is marked '1.' and the second ending is marked '2.'.

ya ke na m tu a si ye ha ki a a che ma wa zo

nji a ya ke

Detailed description: This system contains measures 12 through 15. The lyrics are: 'ya ke na m tu a si ye ha ki a a che ma wa zo'. The word 'nji a ya ke' is written below the first measure.

ya ke na a m ru di e Bwa na Bwa na

1. 2. FINE

Detailed description: This system contains measures 16 through 19. It includes a first ending (1.) and a second ending (2.) which ends with 'FINE'. The lyrics are: 'ya ke na a m ru di e Bwa na Bwa na'. The word 'FINE' is written above the second ending.

20



1.Kwama a na kama vi le Mbi ngu zi li vyo ju u sa na ku li ko n chi ka dha li ka

26



nji a za ngu zi ju u sa na ku li ko nji a ze nu

30



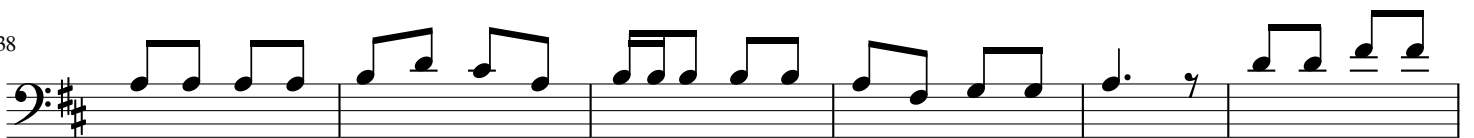
2.Mtu mba ya na a a che nji a ya ke na a m ru di e Bwa na na e a ta m re

37



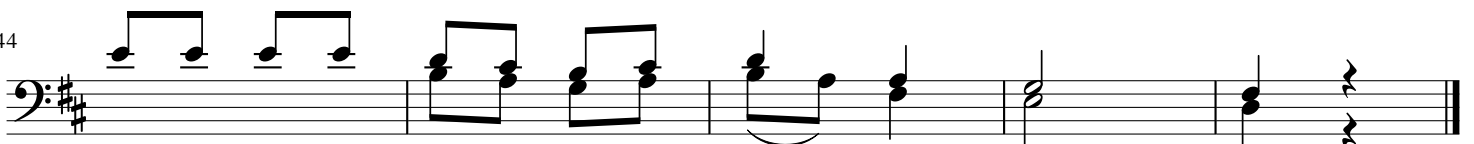
he mu

38



3.Ka ma mvu a i shu ka vyo nathelu ji ku to ka mbi ngu ni wa la ha i

44



ru di hu ko ba li hu i nywe sha ar dhi