

KWA NINI WAKRISTO HATUPENDANI?

AMOS A.M. KASELA
IFAKARA-PARISH

a) Kwa ni ni wa kri sto
b) Tu we na u pe ndo ja ma ni tu we na u pe ndo ja ma

The first system of the hymn is written in 3/8 time with a key signature of one sharp (F#). It consists of two staves: a treble staff and a bass staff. The melody is primarily in the treble staff, with accompaniment in the bass staff. The lyrics are split into two parts, 'a)' and 'b)', which are sung in parallel.

5
ni kwa ni ni wa kri sto ja ma ni ha tu pe nda ni
tu we na u pe ndo i li tu fi ke mbi ngu ni chu ki

The second system continues the melody and accompaniment. It includes a repeat sign at the end of the system, indicating that the final phrase 'chu ki' is repeated.

10
zi me ta wa la ka ti ka mi o yo ye tu u ki wa ka ma m kri sto

The third system continues the melody and accompaniment. It includes a repeat sign at the end of the system, indicating that the final phrase 'u ki wa ka ma m kri sto' is repeated.

15
fu ngu a mo yo wa ko.

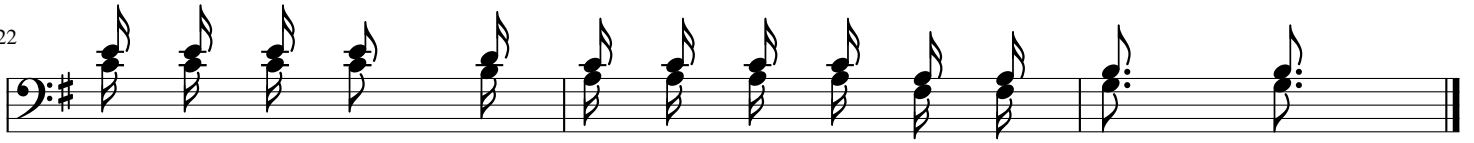
The fourth system concludes the hymn. It includes a repeat sign at the end of the system, indicating that the final phrase 'wa ko.' is repeated.

17



1.a)U pe ndo kwe li u me to we ka tu ki wa
 b)Si si kwa si si tu na u wa na
 2.a)Twa se ma kwa mba twa mpe nda Mu ngu
 b)Si si kwa si si ha tu pe nda ni

22



ka ma wa kri sto tu du mi she u - pe ndo.