

EE MUNGU UNIUMBIE MOYO SAFI

Regani Massawe, Feb 2021

i

Ee Mu ngu u ni u mbi e moyo sa fi

Ee Mu ngu Ee Mu ngu ni u mbi e moyo sa fi u i fanyeupya ro ho

Ee Mu ngu

Detailed description: This system contains the first six measures of the piece. It features a piano accompaniment with a treble and bass clef. The melody is written in the treble clef. The lyrics are placed above and below the notes. The key signature has one flat (Bb) and the time signature is 4/4.

7 li yo tu li a 1. 2.

i li yo tu li a ndaniya ngu ndaniya ngu

Detailed description: This system contains measures 7 through 10. It includes a first ending (1.) and a second ending (2.). The piano accompaniment continues with chords and moving lines. The melody is in the treble clef. The key signature remains Bb and the time signature is 4/4.

18

1. Ee Mu ngu u ni re he mu sa wa sa wa na fa dhi li za ko
2. Ee Mu ngu u ni u mbi e mo o sa fi u i fa nye u pya
3. U ni ru di shi e fu ra ha fu ra ha a wo ko vu wa ko

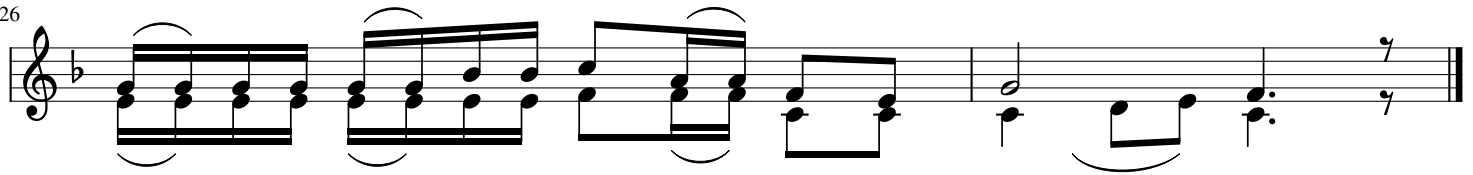
Detailed description: This system contains measures 18 through 21. It features three different vocal lines. The piano accompaniment provides harmonic support. The melody is in the treble clef. The key signature is Bb and the time signature is 4/4.

22

ki a si cha wi ngi wa re he ma za ko u ya fu te ma ko sa ya ngu
ro ho i li yo tu li a nda ni ya ngu u si ni te nge na u so wa ko
u ni te ge me zekwa ro ho ya wa pe si ni ta wafundi sha wako sa ji nji a za ko

Detailed description: This system contains measures 22 through 25. It continues the three vocal lines from the previous system. The piano accompaniment is consistent. The melody is in the treble clef. The key signature is Bb and the time signature is 4/4.

26



u ni o she ka bi sa na u o vu wa ngu
Ro ho a ko mta ka ti fu u si ni o ndo le e
na we nye dha mbi wa ta re je a kwa ko