

NAFSI YANGU ITASHANGILIA: Seraphin T. Kimario
CATHEDRAL ARUSHA.
 03-11-2011

Na-fsi ya-ngu i-ta-sha-ngi-li-a, i-ta-sha-ngi-li-a ka-ti-ka

Bwa-na Bwa-na Mu-ngu wa-ngu

1. Mo-yo wa-ngu wa-mwa-dhi-mi sha Bwa-na na ro-ho ya ngu i-me-

m-fu-ra-hi a Mu-ngu Mwo-ko-zi wa ngu; kwa ku-wa a-me-u-

ta-za-ma u-nyo-nge wa m-ja-ka-zi wa-ke; kwa ma-a-na ta-za-ma to-ke-

a sa sa; Vi-za-zi vyo-te wa-ta-ni-i ta m-ba-ri-ki wa.



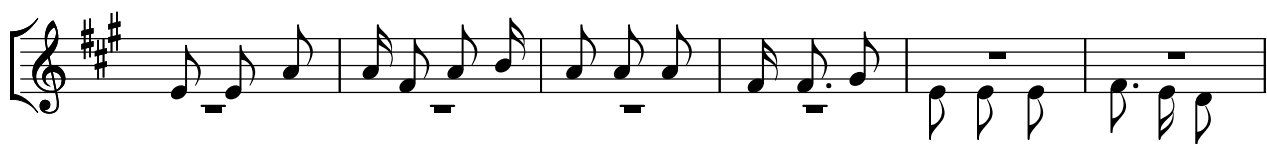
2. Kwa ku-wa mwe- nye ngu-vu a-me-ni-te-nde-a ma-ku-u, na ji-na la-ke



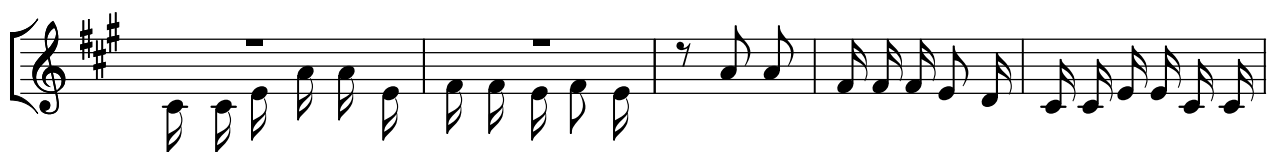
ni ta-ka- ti-fu, na re-he-ma za-ke hu-du-mu vi-za- zi ha-ta vi-- za-zi



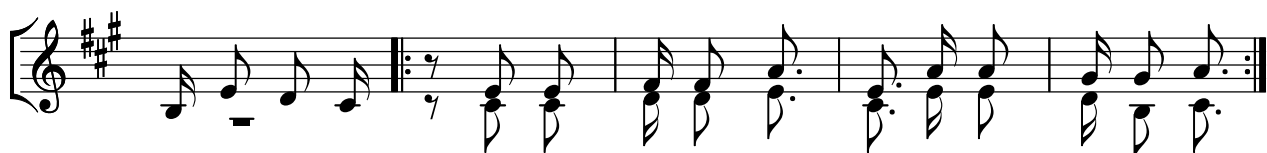
Kwa ha- o wa- na- o - m-cha.



3. We-nye nja- a a-me- wa-shi-bi- sha me-ma, na we-nye ma-li a-



me-wa-o-ndo-a mi- ko-no mi-tu-pu; A-m- m-sa-i-di - a I-sra-e-li m-tu-



mi-shi wa-ke; I - li ku-ku - mbu- ka re-he- ma za - ke.