

MIMI NIKUPE NINI

♩ = 130
Soprano:

By: IRA. M. Jules 31 January 2021 Parish ya Makele Choir: A. Maria Jimbo: Kigoma Tanzania
¥ Winbo wa sadaka ¥

Mu ngu wa - ngu mi mi ni ku pe ni

mi mi ni ku pe ni

This system contains the first two lines of the musical score. The Soprano part is on a single staff. The Alto, Tenor, and Bass parts are grouped together on three staves. The lyrics are written below the notes.

ni? - ni - ku pe

ni? - ni - ku pe

(Bwa na)

This system contains the next two lines of the musical score. The Soprano part is on a single staff. The Alto, Tenor, and Bass parts are grouped together on three staves. The lyrics are written below the notes.

ni ni? cha ku ku pe nde - za le

ni ni? cha ku ku pe nde za le

This system contains the final two lines of the musical score. The Soprano part is on a single staff. The Alto, Tenor, and Bass parts are grouped together on three staves. The lyrics are written below the notes. The system ends with a double bar line and repeat signs.

10

o - le o

o si ku hi i ya le

o mwo ko zi wa

13

- le o ni ku pe ni

- ngu le o ni ku pe ni

- ngu le o ni ku pe ni

15

ni? le ni?

ni? le ni?

tc na si ku hi i ya lc ni?

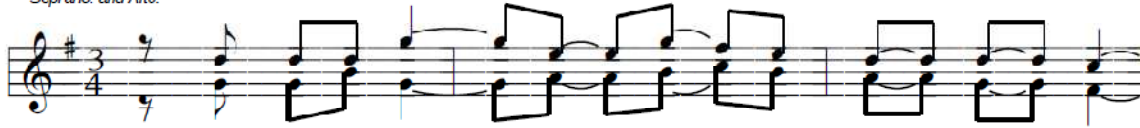
D.S.

D.S.

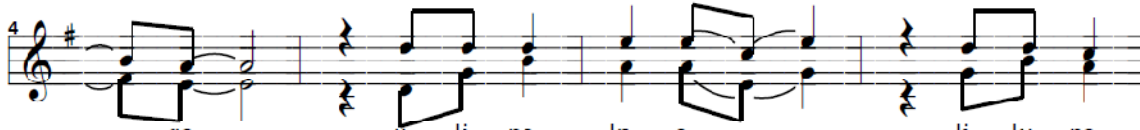
D.S.

mimi nikupe nini

♩ = 130
Soprano: and Alto:



1a)Ni	na	cho	ku	-	to	le	a	le	o	Bwa	na	ni	ki	do
b)Ni	li	cho	a	-	nda	a	si	ku	hi	i	ya	le	o	Bwa
2a)Na	ku	le	te	-	a	-	m	ka	te	wa	-	ngu	-	Mu
b)-	-	-	-	-	-	-	di	va	i	ya	-	ngu	-	Mu
3a)-	-	-	-	-	-	-	mi	fu	go	ya	-	ngu	-	Mu
b)-	-	-	-	-	-	-	dha	bi	hu	za	-	ngu	-	Mu
4a)-	-	-	-	-	-	-	fa	mi	li	a	ya	ngu	-	Mu
b)-	-	-	-	-	-	-	ndu	-	gu	za	-	ngu	-	Mu



-	go	-	u	ki	po	ke	e	-	-	ki	ku	pe
-	na	-	u	-	-	-	-	-	-	-	-	-
-	ngu	-	u	wu	-	-	-	-	-	u	-	-
-	ngu	-	u	yi	-	-	-	-	-	i	-	-
-	ngu	-	u	yi	-	-	-	-	-	i	-	-
-	ngu	-	u	zi	-	-	-	-	-	zi	-	-
-	ngu	-	u	yi	-	-	-	-	-	i	-	-
-	ngu	-	u	wa	-	-	-	-	-	wa	-	-

Fine



nde	ze
-	-
-	-
-	-