

YESU NJOO MOYONI

Wimbo wa kupokea

JAMES BABU ANDREA

 = 111
Moderato

1
Rock Organ (1)

1 2 3

Ye su njo o mo yo ni u ni pe ngu

Rock Organ (2)

Rock Organ (3)

Ye su mo yo ni u ni pe ngu

Rock Organ (4)

Rock Organ (1)

4

5

Musical staff for Rock Organ (1) in treble clef. It contains a whole note on the first line (F4) followed by a quarter rest, and then a quarter note on the second line (G4), an eighth note on the third line (A4), a quarter note on the second line (G4), and a quarter note on the first line (F4).

vu

Ye su njo o

Rock Organ (2)

Musical staff for Rock Organ (2) in treble clef. It contains a quarter note on the second line (G4), a quarter note on the third line (A4), a quarter note on the second line (G4), a quarter note on the first line (F4), a quarter note on the second line (G4), an eighth note on the third line (A4), a quarter note on the second line (G4), and a quarter note on the first line (F4).

Bwa na

Ye su

Rock Organ (3)

Musical staff for Rock Organ (3) in treble clef. It contains a quarter note on the first space (F4), a quarter note on the first space (F4), a quarter note on the first line (F4), a quarter note on the first space (F4), a quarter note on the first space (F4), a quarter note on the first line (F4), a quarter rest, and a quarter note on the first space (F4).

vu

Ye su

Rock Organ (4)

Musical staff for Rock Organ (4) in bass clef. It contains a whole note on the first line (F3) followed by a quarter rest, and then a quarter note on the second line (G2), a quarter note on the first line (F2), a quarter note on the second line (G2), and a quarter note on the first line (F2).

Rock Organ (1)

Musical staff for Rock Organ (1) in treble clef. It contains three measures of music. The first measure starts with a measure rest labeled '6'. The notes are G4, A4, and B4. The second measure starts with a measure rest labeled '7'. The notes are B4, A4, and G4. The third measure starts with a measure rest labeled '8'. The notes are G4, F4, and E4. The staff ends with a double bar line and repeat dots.

mo yo ni

ni pa te

u zi ma

Rock Organ (2)

Musical staff for Rock Organ (2) in treble clef. It contains three measures of music. The first measure has notes G4, A4, and B4. The second measure has notes B4, A4, and G4. The third measure has notes G4, F4, and E4. The staff ends with a double bar line and repeat dots.

Rock Organ (3)

Musical staff for Rock Organ (3) in treble clef. It contains three measures of music. The first measure has notes G4, A4, and B4. The second measure has notes B4, A4, and G4. The third measure has notes G4, F4, and E4. The staff ends with a double bar line and repeat dots.

mo yo ni

ni pa te

u zi ma

Rock Organ (4)

Musical staff for Rock Organ (4) in bass clef. It contains three measures of music. The first measure has notes G3, F3, and E3. The second measure has notes E3, D3, and C3. The third measure has notes C3, B2, and A2. The staff ends with a double bar line and repeat dots.

1
Rock Organ (1)

2 10 11

Ni na ku pe nda Ye
 Ni na ku ka ri bi
 U ni po nye Bwa na
 Na u zi di Ye su

su wa ngu
 sha Ye su
 wa ngu
 wa ngu

we we ni mwe
 u ka e na
 mo ko zi wa
 ku wa na

Rock Organ (2)

Rock Organ (3)

Rock Organ (4)

Rock Organ (1)

12

13

14

Musical notation for Rock Organ (1) in treble clef. Measure 12: quarter note G4, quarter rest. Measure 13: eighth notes G4, A4, B4, A4, G4, F4, E4. Measure 14: quarter note D4, quarter note C4, quarter note B3.

ma
mi
ngu
mi

u na ni i ma ri
u ni li she na u
we we ndi ye ki mbi
na u ni pe u zi

sha mi mi
nywe she
li o
ma te le

Rock Organ (2)

Musical notation for Rock Organ (2) in treble clef. Measure 12: quarter note G4, quarter rest. Measure 13: eighth notes G4, A4, B4, A4, G4, F4, E4. Measure 14: quarter note D4, quarter note C4, quarter note B3.

Rock Organ (3)

Musical notation for Rock Organ (3) in treble clef. Measure 12: quarter note G4, quarter rest. Measure 13: quarter rest. Measure 14: quarter note G4, quarter rest.

ma

Rock Organ (4)

Musical notation for Rock Organ (4) in bass clef. Measure 12: quarter note G2, quarter rest. Measure 13: quarter rest. Measure 14: quarter note G2, quarter rest.

Rock Organ (1)

15

16



si ku zo
kwada mu ya
maisha ni mwa
wa mi le

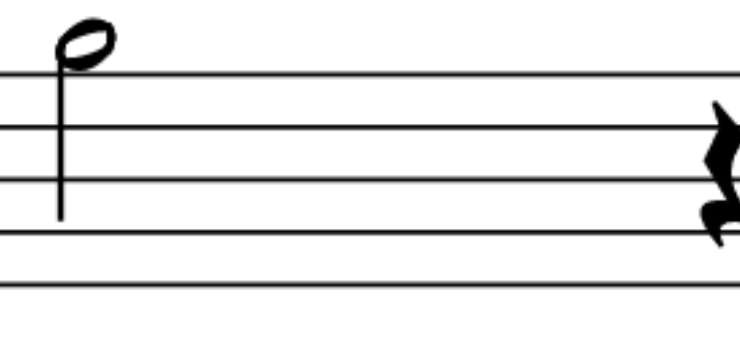


te. Bwa na
ko. Bwa na
ngu. Bwa na
le. Bwa na

Rock Organ (2)



Rock Organ (3)



Rock Organ (4)

